

“Make healthy choices every day, keep
diabetes at bay”

ལོ་བསྐྱར་གསོ་བའི་གནས་དེབ།

༢༠༡༦

Annual Health Bulletin

2016



Health Management & Information System
Policy & Planning Division
Ministry of Health
Royal Government of Bhutan
Thimphu



ISBN: 978-99936-958-8-2

A Window to Health Sector Performance



ལོ་བསྐྱར་གསོ་བའི་གནས་དེབ།

༢༠༡༦

Annual Health Bulletin 2016



Health Management & Information System
Policy & Planning Division
Ministry of Health
Royal Government of Bhutan
Thimphu

AHB 2016 - Secretariat Members

Title & Name	Designation	Email ID
Ms Dorji Pelzom	Head (Senior Statistical Officer)	Dorji.pelzom@health.gov.bt
Mr Sonam Wangdi	Planning Officer	sonamwangdi@health.gov.bt
Mr Doyo	Sr. Statistical Officer	doyo@health.gov.bt
Ms Thinley Wangmo	Sr. Adm. Assistant	thinleywangmo@health.gov.bt

Contents By

Sl#	Particulars	Contributor(s)
1.	Part I: The State of the Nation's Health 2016- Summary of status and trends	Ms Dorji Pelzom, Head, HMIS Unit, PPD: Dorji.pelzom@health.gov.bt and Mr. Mongal Singh Gurung, Research Officer, Health Research and Epidemiology Unit, PPD: msgurung@health.gov.bt
2.	Part II: MDGs & National Health Indicator Estimates- Indicators and Fact-sheets	Mr Doyo, Sr. Statistical Officer, HMIS Unit, PPD: doyo@health.gov.bt
3.	Part III: Figures & Tables- compilation	Mr Doyo, Sr. Statistical Officer, HMIS Unit, PPD: doyo@health.gov.bt

The opinions and views expressed by the contributor(s) in this publication do not reflect the policies of the Ministry of Health, Royal Government of Bhutan.

©Ministry of Health 2016

All Rights reserved!

Request for publication or for permission to reproduce or translate for sale or non-commercial purpose should be addressed to BHMIS, PPD, Ministry of Health.

ISBN: 978-99936-958-8-2

Design, layout and printing by KMT Printing Press.

Contents

ABBREVIATIONS.....	vi
FOREWORD.....	vii
Part I: State of the Nation’s Health 2016 – Summary of status and trends.....	1
Part II: References.....	8
Part III: Status of Health Related Millennium Development Goals (MDGs) – Indicators & fact-sheets.....	9
Part IV: National Health Indicators.....	11

FIGURES

Figure 2.1.1 Top-ten Communicable Diseases reported by the Health Centers of Bhutan in 2015	4
Figure 2.2.1 Top-ten Noncommunicable Diseases reported by the Health Centers of Bhutan in 2015	5
Figure 23.1 Top-ten Causes of Mortality Reported by the health Facilities of Bhutan in 2015	5
Figure 3.1 Total new cases and total morbidity cases seen by BHUs	29
Figure 3.2 – Total Outpatient & Inpatient cases seen in all hospitals	29
Figure 6.1 – Current health facilities [2015] map.....	94

TABLES

Table 1: Life expectancy, fertility and mortality.....	11
Table 2: Cause-specific morbidity and mortality.....	12
Table 2.1 Trends of selected morbidity indicators, 2011 - 2015.....	12
Table 2.2 Total Morbidity at National Level by gender and age group - 2015	13

Table 2.3 Under 5 total Morbidity at National Level by gender and age group - 2015	19
Table 2.4 National Leprosy Report - 2015.....	22
Table 2.5 TB Sputum examination report – 2015.....	22
Table 2.6 TB Case Notifications – 2015	23
Table 2.7 TB Smear conversion at 2/3 months - 2015.....	23
Table 2.8 TB Treatment outcome for the past year.....	24
Table 2.9 Mortality Report from Health Facility, 2011 - 2015.....	25
Table 2.10 Malaria Mortality - 2015.....	28
Table 3: Facility based disease case findings and case-loads.....	29
Table 3.1 Disease cases and case-load indicators.....	29
Table 3.2 Type of Cases Seen in Bhutan, 2011 - 2015.....	30
Table 3.3 Outpatient Cases seen in all Hospitals – 2015.....	34
Table 3.4 Inpatient Cases in all Hospitals - 2015.....	40
Table 3.5 Morbidity Cases Seen by Basic Health Units - 2015.....	46
Table 3.6 Case Load by Health Facilities - 2015.....	51
Table 3.7 Notifiable Disease Report - 2015.....	59
Table 4: Health service coverage.....	60
Table 4.1 Selected health service coverage indicator.....	60
Table 4.2 Antenatal Care (Clinic Attendance) - 2015.....	61
Table 4.3 Deliveries Attended by Trained Health Personnel and Post-Natal Care - 2015.....	62
Table 4.4 Nutritional & Vitamin A status of Children Attending Clinics - 2015...	63
Table 4.5 Immunization Status by Districts - 2015.....	64
Table 4.6 Family Planning Methods by Districts - 2015.....	65
Table 4.7 Hospital Admission & Average Length of Stay - 2015.....	66
Table 4.8 Laboratory Tests by Districts - 2015.....	67
Table 4.9 Surgeries by Districts - 2015.....	68
Table 4.10 Selected Diagnostic Services by Districts - 2015.....	69
Table 4.11 Dental Services by Districts - 2015.....	70

Table 4.12 Facility Wise Selected Services - 2015.....	71
Table 4.13 Malaria Cases - 2015.....	85
Table - 4.14 Number of Cases availing Traditional Medicine Service - 2015.....	86
Table - 4.15 Therapeutic Services provided by Traditional Medicine Service - 2015	88
Table 5: Health risk factors.....	91
Table 5.1 Selected health risk factors indicator.....	91
Table 5.2 Sanitation & Hygiene by Districts - 2015.....	92
Table 5.3 Population with Impairment by Districts - 2015.....	93
Table 6: Health workforce and infrastructure.....	95
Table 6.1 Selected health human resource and infrastructure indicator.....	95
Table 6.2 Health Human Resource - 2015.....	95
Table 6.3 Health Facilities by Districts - 2015.....	97
Table 6.4 Health Infrastructure by Districts - 2015.....	98
Table 7: Demographic statistics.....	105

ABBREVIATIONS

ADHO	-	Assistant District Health Officer
ANC	-	Antenatal Care
ARI	-	Acute Respiratory Infection
BB	-	Borderline Borderline
BCG	-	Bacili Callmal Gurrina
BHU	-	Basic Health Unit
BL	-	Borderline
BT	-	Borderline Tuberculoid
CBR	-	Crude Birth Rate
CDR	-	Crude Death Rate
DHO	-	District Health Officer
DMPA	-	Depomedroxyprogesterone acetate
DPT	-	Dephtheria, Pertusis and Tetanus
GDMO	-	General Duty Medical Officer
GFR	-	General Fertility Rate
GNM	-	General Nurse Midwife
HA	-	Health Assistant
HIV	-	Human Immuno Virus
HMIS	-	Health Management Information System
HRD	-	Human Resources Division
HRH	-	Human Resources for Health
IND	-	Indeterminate
IMR	-	Infant Mortality Rate
IUD	-	Intrauterine Device
JDWNRH	-	Jigme Dorji Wangchuck National Referral Hospital
LSRDP	-	Life Style Related Disease Program
MB	-	Multi Bacillary
MDG	-	Millennium Development Goal
MMR	-	Maternal Mortality Ratio
MoH	-	Ministry of Health
NHS	-	National Health Survey
OCP	-	Oral Contraceptive Pills
OPV	-	Oral Polio Vaccine
ORC	-	Outreach clinics
PHCB	-	Population and Housing Census of Bhutan
PMTCT	-	Prevention of Mother-to-Child-Transmission
PPH	-	Post-partum Haemorrhage
RGoB	-	Royal Government of Bhutan
SEAR	-	South East Asian Region
TFR	-	Total Fertility Rate
VCT	-	Voluntary Counseling and Testing
VHW	-	Village Health Worker
VO	-	Vasectomy Operation
WHO	-	World Health Organization



དཔལ་ལྷན་འབྲུག་གཞུང་།
གསོ་བ་ལྷན་ཁག།
ཐིམ་ཕུ།

ROYAL GOVERNMENT OF BHUTAN
MINISTRY OF HEALTH
THIMPHU: BHUTAN
P. O. BOX: 726



FOREWORD



The Ministry of Health is pleased to publish the Annual Health Bulletin 2016; the 29th series in its edition. It presents the status of nation's health and summary of health data and information on morbidity and mortality, patient case loads, health service coverage, health workforce, health infrastructure, health care cost and demographic statistics.

The health information in is an important national asset and cornerstone of our health system. In Bhutan, the need to have dynamic Health Management and Information System (HMIS) is becoming increasingly important for better planning and effective use of resources in the light of emerging challenges such as epidemiological transition, rising cost of health care, shrinking donor support and shift of focus of development partners on knowledge management. To this end, the ministry has been putting its best effort to strengthen the existing HMIS despite daunting challenges of inadequate ICT infrastructure and connectivity issues in the country. The ongoing efforts to improve the system include scaling up of online District Health Information System 2 (DHIS2), development of web-based Maternal and Child Health Tracking System and electronic Patient Information System (ePIS).

The bulletin is the most important annual periodical of the ministry prepared based on the wide range of information collected from the health centers nationwide. I hope that the bulletin will be of immense use for the policy-makers, planners, health care providers, development partners and the general public to support better planning and policy formulation, to track health-system performance and make effective health-related decisions.

TASHI DELEK!

TANDIN WANGCHUK
MINISTER

PART I : STATUS OF NATION'S HEALTH - 2016

Introduction

There are records of traditional medicine being practiced in Bhutan as early as seventh century.(1) In seventeenth century, Zhabdrung Ngawang Namgyel (1594-1651) who founded Bhutan as a nation state introduced *Gso-ba Rig-pa* (traditional medicine) in the country with help of his physician Tenzin Drukda. Thus the *Gso-ba Rig-pa* became the first form of medicine in Bhutan.(2) Drungtsho Pema Dorji returned to Bhutan as a qualified traditional physician in 1953, and the first traditional medicine dispensary was established at Dechencholing, Thimphu, on 28th June 1968.(1) Later in 1979, the first national indigenous hospital was established at its present location at Kawajangsa, Thimphu. In terms of modern (allopathic) medicine, Bhutan had its first Bhutanese doctor with MBBS degree in 1954. There were two hospitals (Thimphu and Samtse) and 11 dispensaries in 1961.(1) Since then there has been remarkable expansion of health services. As a result, Bhutan now has 31 hospitals (including one indigenous hospital at Thimphu), 235 Basic Health Units and Sub-Posts, 52 Indigenous Units, and 562 Outreach Clinics providing both traditional and modern medicine as two arms of the Ministry of Health. Thereby, giving Bhutanese people choice on the type of medicinal treatments.

It is the Principles of State Policy that the “State shall provide free access to basic public health services in both modern and traditional medicines” in Bhutan.(3) In pursuance of the Principles of State Policy and towards achieving Ministry of Health’s vision of being a “Nation with the best Health”, the Ministry continuously endeavor to provide healthcare services of quality in both traditional and modern medicines; to prevent, control, eliminate and eradicate diseases; to rehabilitate and promote healthy living; and to ensure sustainable, responsive, equitable, accessible, reliable and affordable health services.(1) As a result, Bhutan has made a commendable progress in achieving both national as well as international goals and targets.

Nonetheless, despite of the Ministry’s rigorous efforts and achievements, the rising trend of Non-Communicable Diseases (NCDs) is a cause of concern for the country. According to a survey carried out in 2014, 13.5% of adult Bhutanese population (18-69 years) were having three or more risk factors for developing NCDs.(4) Similarly, another survey found that the current childhood stunting prevalence in Bhutan is 21.2% and anemia prevalence among children aged 6 - 59 months is 43.8%, which as per WHO’s categorization are serious public health concern.(5) On the other hand, Bhutan is still battling communicable

diseases such as HIV/AIDS, MDR-TB, STIs, and emerging climate-sensitive diseases like dengue. Thus, Bhutan is battling double burden of non-communicable and communicable diseases. In this light, status of nation's health will be presented as;

- i. Status of Millennium Development Goals of health related indicators in Bhutan
- ii. Morbidity and mortality pattern of diseases (non-communicable diseases and communicable diseases) in 2015,
- iii. Infrastructure and human resource update, and
- iv. Health expenditure and financing update

SECTION 1: Status of Millennium Development Goals of Health Related Indicators

The era of Millennium Development Goals (MDG) came to an end in 2015 and gave way to Sustainable Development Goals. Therefore, it's a right time to present the MDG achievements status of Bhutan. Four of the eight MDGs, viz., reduce child mortality, improve maternal health, combat HIV/AIDS, malaria & other diseases, and ensure environmental sustainability had 12 health-related indicators. Bhutan's achievements on the health-related targets are commendable (Table 1.1).

Table 1.1 Health related Millennium Development Goals and achievement status in Bhutan

Millennium Development Goals	1990	2012 [†]	State of progress
Goal 4: Reduce Child Mortality			
Under-Fiver Mortality Rate (per 1000 live births)	123	37.3	Achieved
Infant Mortality Rate (per 1000 live births)	90	30	Achieved
Proportion of Children covered under Immunization Programme (%)	84	95.1	Achieved
Goal 5: Improve maternal health			
Maternal Mortality Ratio (per 100,000 live births)	560	86	Achieved
Births attended by skilled health personnel (%)	15	74.6	Achieved
Goal 6: Combat HIV/AIDS, malaria & other diseases			
HIV cases detected	0	432 [‡] (July 2015)	-
Contraception prevalence rate (%)	18.8	65.6 (BMIS 2010)	Achieved
Number of malaria cases and incidences (cases per 100,000)	22126 (1991)	6.1 (AHB 2013)	Achieved
Number of TB cases and incidences (cases per 100,000)	4232	225 (AHB 2013)	Achieved
Goal 7: Ensure Environmental Sustainability			
Proportion of population without sustainable access to an improved water source (%)	55	2.3	Achieved
Proportion of population without sustainable access to an improved sanitation (%)	33 (1994)	31.7 (NNS 2015)	*
Proportion of population using solid fuels (%)	75 (2000)	-	No Data

NNS – National Nutrition Survey, NHS – National Health Survey, BMIS – Bhutan Multiple Indicators Survey, AHB – Annual Health Bulletin

* Due to the change in definition of 'improved sanitation' in the later surveys, the proportion of population without sustainable access to an improved sanitation doesn't show much change. However, as per BLSS 2003, Bhutan has achieved MDG target - access to improved sanitation. Also, when compared to BMIS 2010 the proportion has decreased from 41.6% to 31.7% in 2015.

[†] Data source: National Health Survey 2012 otherwise indicated.

[‡] National HIV/AIDS Control Programme, Ministry of Health

* Due to the change in definition of 'improved sanitation' in the later surveys, the proportion of population without sustainable access to an improved sanitation doesn't show much change. However, as per BLSS 2003, Bhutan has achieved MDG target - access to improved sanitation. Also, when compared to BMIS 2010 the proportion has decreased from 41.6% to 31.7% in 2015.

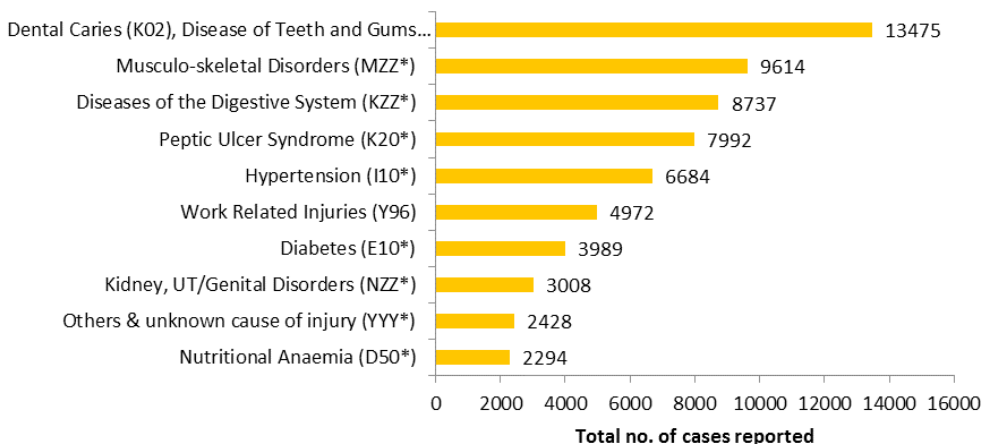
SECTION 2: Morbidity and Mortality Pattern of diseases 2015

2.1 Non-Communicable diseases

The Non-Communicable Disease (NCD) risk factors STEPS Survey, conducted in 2014, estimated that 13.5% of adult Bhutanese population (18-69 years) had three or more of the modifiable NCD risk factors. The survey also found that 7.4% smoked tobacco, 42.4% consumed alcohol, 66.9% took less than five servings of fruits and vegetables, 6.4% had insufficient physical activity and 33% were overweight. The prevalence of impaired fasting glycaemia among the adult Bhutanese was 10.7% and 6.4% adult Bhutanese had raised fasting glucose. The percentage with raised cholesterol level was 12.5% and the mean salt intake was 9.0 gm/day.(4)

Correspondingly, the health facilities of Bhutan have been reporting increasing number of NCDs cases every year. Figure 2.1.1 shows the top-ten NCDs cases reported by the health facilities in 2015. Most of the NCDs in the top-ten are directly related to one or more modifiable risk factors mentioned above. The health facilities in Bhutan reported that 12.3% of total deaths (n=1284) in 2015 was due to alcohol liver diseases and it is the number one cause of mortality in Bhutan (Figure 2.3.1).

Figure 2.1.1 Top-Ten Noncommunicable Diseases reported by the health centers of Bhutan in 2015

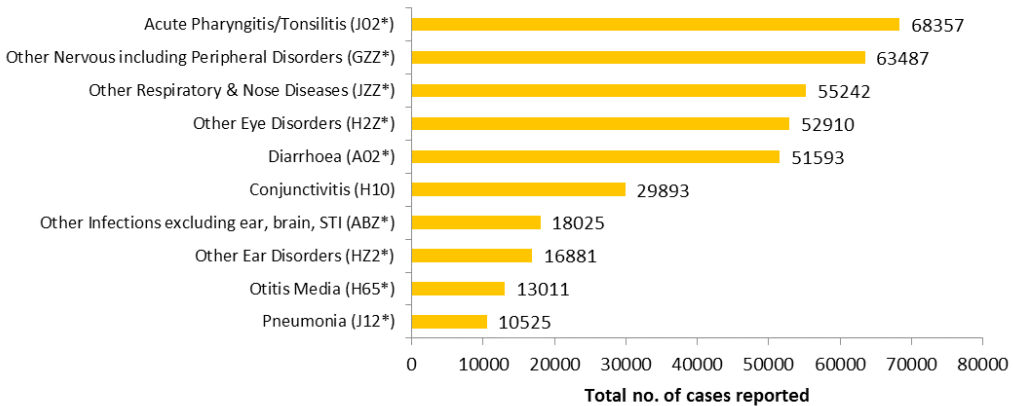


2.2 Communicable diseases

The malaria cases in Bhutan have remarkably reduced from 39852 cases in 1994 to 34 cases (all types) in 2015. However, other communicable diseases such as MDR-TB are on the rise posing a serious threat to the well-being of the people. The figure 2.2.1 shows the top-

ten communicable diseases, reported by the health facilities of Bhutan in the year 2015. The five most prevalent communicable diseases reported by health facilities of Bhutan are acute pharyngitis/tonsillitis (68,357 cases), nervous including peripheral disorders (63,487 cases), other respiratory & nose diseases (55,242 cases), other eye disorders (52,910 cases), and diarrhoea (51,593 cases).

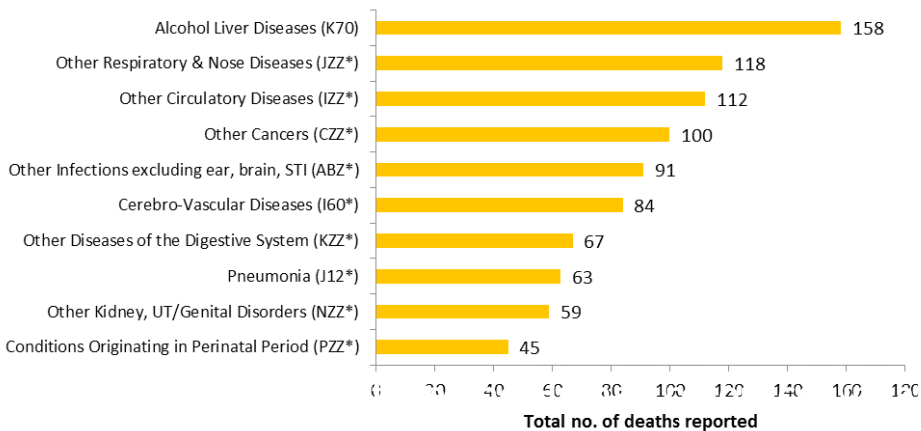
Figure 2.2.1 Top-Ten Communicable Diseases reported by the health centers of Bhutan in 2015



2.3 Mortality Reported by Health Facilities of Bhutan

In the year 2015, the health facilities of Bhutan reported a total of 1284 deaths. Alcohol liver disease was the number one cause of mortality (158 deaths) followed by other respiratory & nose diseases (118 diseases) and other circulatory diseases (Figure 2.3.1).

Figure 2.3.1 Top-ten Causes of Mortality Reported by the health facilities of Bhutan, 2015



SECTION 3: Infrastructure and Human Resource Update

In 1956, a 20-bedded indigenously architected hospital at Thimphu, was completed and hospital at Samtse with 10 beds was built. Thus, in 1961 we had two hospitals (Thimphu and Samtse) and 11 dispensaries at Haa, Paro, Trongsa, Bumthang, Trashigang, Sibsoo, Tsirang, Samdrupjongkhar, Kalikhola and Dagapela.(1) As of today there are 31 hospitals (including one indigenous hospital), 235 BHUs (including Sub-Posts), and 562 Outreach Clinics (with and without sheds).

On the human resources front, Dr. Tobgyel reported for duty at Dechencholing Palace in Thimphu as the first Bhutanese doctor in 1954.(1) Since then Bhutan has been continuously sending students to pursue various health/medical trainings to other countries as well as to upgrade the qualification of the healthcare providers. Moreover, the Royal Government of Bhutan started Faculty of Nursing and Public Health (formerly known as Royal Institute of Health Science) in 1974 to address the ever increasing demand for healthcare providers in the country. Bhutan had its first qualified traditional physician in 1953 and the first school for traditional medicine were established in Thimphu in 1979. (1) Faculty of Traditional Medicines (formerly known as National Institute of Traditional Medicine) continues to train traditional healthcare providers in the country ever since its establishment. Further, Khesar Gyalpo University of Medical Sciences of Bhutan – the first medial university of Bhutan was established as an “overarching university for existing institutions engaged in medical and health care education and training programme in the country and new institutions established hereinafter”.(6) The newly established Faculty of Medicines under the university started PG Residency Programme for MBBS graduates from 2014. Bhutan now has a total of 251 doctors, 1105 nurses, and 548 health assistants (Table 3.1). The country also has 47 indigenous physicians and 100 sMenpas.

Table 3.1 Number of healthcare providers in health facilities of Bhutan categorized by gender, 2015

Categories of healthcare providers	Gender		Total
	Male	Female	
Doctors (MBBS/Specialists)	176	75	251
Clinical Officers (CO)	30	5	35
Nurses (Assistant Nurse/GNM/B. Sc. Nurse) /HA	734	884	1618
Drungtshos/ sMenpas	109	38	147
Pharmacists/Lab. Technologist/Physiotherapist/Technicians	591	374	965

SECTION 4: Health Expenditure and Financing

Bhutanese people receive free health care including referral out of Bhutan. However, with new emerging diseases including non-communicable diseases such as cancer and kidney failures, the country is facing the challenges of rise in health expenditure including referral cost.(7,8)

Luckily, the wise leaders of Bhutan, foreseeing the raising trend of health expenditure founded Bhutan Health Trust Fund (BHTF) in 1997, and formally launched it on 12th May 1998.(9) Since then there has been generous support of the well-wishers of Bhutan and kind donors. As a result, as of September 2015, BHTF had a corpus sum of Nu. 1.3 billion.(10)

In keeping with BHTF's objective and as a special tribute to His Majesty the Fourth Druk Gyalpo, Jigme Singye Wangchuck, during the 60th Birth Anniversary of His Majesty BHTF has started financing procurement of vaccines and Essential Drugs from 2015-16 fiscal years.(11)

Conclusion

Bhutan has an exemplary healthcare system wherein both traditional and modern medicine are provided at free of cost to its people. As a result, Bhutan has made impressive progress in achieving its national and international goals and targets. Nonetheless, it is confronted with new challenges such as double burden of noncommunicable and communicable diseases, sustainability of its free healthcare system, and shortages of healthcare providers.

PART II: Reference

1. Overview | Ministry of Health [Internet]. [cited 2016 Mar 12]. Available from: <http://www.health.gov.bt/about/overview/>
2. Dorji T, Melgaard B. Medical History of Bhutan: Chronicle of Health and Disease from Bon Times to Today. Thimphu, Bhutan: Centre for Research Initiatives; 2012. 1-174 p.
3. The Constitution of The Kingdom of Bhutan. Thimphu, Bhutan; 2008.
4. National survey for noncommunicable disease risk factors and mental health using WHO STEPS approach in Bhutan -2014. World Health Organization; 2015.
5. Royal Government of Bhutan Ministry of Health. National Nutrition Survey 2015. Thimphu Bhutan; 2016. 1-224 p.
6. University of Medical Sciences Act of Bhutan 2012 [Internet]. 2012. Available from: http://www.nab.gov.bt/assets/uploads/docs/acts/2014/University_of_Medical_Sciences_Act_of_Bhutan_2012eng8th.pdf
7. National Health Accounts, Bhutan, 2011-12 an 2012-13 (Using SHA 2011 Framework) [Internet]. Thimphu, Bhutan: Ministry of Health; Available from: <http://www.health.gov.bt/wp-content/uploads/moh-files/2015/11/Bhutan-National-Health-Accounts.pdf>
8. Annual Health Bulletin 2015. Thimphu, Bhutan: Health Management & Information System, Policy and Planning Division, Ministry of Health, Royal Governemnt of Bhutan; 2015.
9. Bhutan Health Trust Fund. Overview [Internet]. 2016 [cited 2016 Mar 7]. Available from: <http://www.webcitation.org/6fpqtazNC>
10. appeal-from-health-minister.pdf [Internet]. [cited 2016 Mar 28]. Available from: <http://www.health.gov.bt/wp-content/uploads/moh-files/2015/09/appeal-from-health-minister.pdf>
11. LAUNCHING BHTF's FINANCING OF ESSENTIAL DRUGS AND VACCINES (9-14 OCTOBER 2015) [Internet]. [cited 2016 Mar 12]. Available from: <http://www.bhtf.bt/events/launching-bhtf-s-financing-of-essential-drugs-and-vaccines-9-14-october-2015.html>

PART III: Status of Health Related Millennium Development Goals (MDGs) - Indicators & fact-sheets

MDG Target#	MDG Indicators	Year				Source	
		1994	2000	2005	2010		2015
1.8	Prevalence of underweight children under-five years of age (%)	38.0	19.0	-	12.7	-	Country MDG Report & BMIS 2010.
1.9	Proportion of population below minimum level of dietary energy consumption (%)	-	-	3.8	5.9	2.8	Country MDG Report & Bhutan Poverty Analysis Report 2012.
4.1	Under-five mortality rate (deaths per 1000 live births)	97.0	84.0	61.5	69.0	37.3	NHS 1994, NHS 2000, PHCB 2005, BMIS 2010 & NHS 2012.
4.2	Infant mortality rate (deaths per 1000 live births)	70.7	60.5	40.1	47.0	30.0	NHS 1994, NHS 2000, PHCB 2005, BMIS 2010 & NHS 2012.
4.3	Proportion of 1 year-old children immunised against measles (%)	84.0	91.0 (2002)	-	95.0	97.2	EPI survey 2008 & NHS 2012.
5.1	Maternal mortality ratio (deaths per 100,000 live births)	380	255	-	-	86.0	NHS 1994, NHS 2000 & NHS 2012.
5.2	Proportion of births attended by skilled health personnel (%)	-	23.7	49.1	64.5	74.6	NHS 2000, PHCB 2005, BMIS 2010 & NHS 2012.
5.3	Contraceptive prevalence rate (%)	18.8	30.7	57.0	65.6	-	NHS 1994, NHS 2000, PHCB 2005, BMIS 2010.
5.4	Adolescent birth rate (births per 1000 women of age 15-19 years)	120	61.7	46.3	59.0	28.4	NHS 1994, NHS 2000, PHCB 2005, BMIS 2010 & NHS 2012.
5.5.a	Antenatal care coverage, at least one visit – ANC 1+ (%)	-	-	-	97.3	97.9	BMIS 2010 & NHS 2012.
5.5.b	Antenatal care coverage, at least four visits – ANC 4+ (%)	-	-	-	77.3	81.7	BMIS 2010 & NHS 2012.
5.6	Unmet need for family planning (%)	-	-	-	11.7	-	BMIS 2010.

Cont.....Part III: Status of Health Related Millennium Development Goals (MDGs) - Indicators & fact-sheets

MDG Target#	MDG Indicators	Year					Source
		1994	2000	2005	2010	2015	
6.A	6.1 HIV prevalence among population aged 15-19 years (%)	-	Sustained at <0.1				Country reported program data – HIV/AIDS Epidemic update report, NACP, DoPH, MoH.
	6.2 Condom use at last high-risk sex (condom use rate %)	-	-	-	1.2	-	
	6.3 Proportion of population aged 15-24 years with comprehensive correct knowledge of HIV/AIDS (%)	-	-	-	21.0	23.2	BMIS 2010 & NHS 2012.
6.B	6.5 HIV infection with access to antiretroviral drugs (%)	-	-	18.8	14.4	40.2	Country reported program data – HIV/AIDS Epidemic update report, NACP, DoPH, MoH
	6.6.a Incidence and death rates associated with malaria (cases per 100,000)	-	927	257	77.0	6.1	Country reported program data – VDCP, DoPH, MoH & AHB 2014.
	6.6.b Incidence and death rates associated with malaria (deaths per 100,000)	-	2.3	0.7	0.3	0.0	
6.C	6.8.a Incidence, prevalence and death rates associated with tuberculosis (prevalence per 100,000)	1860	754	536	313	225	Country reported program data – NTCP, DoPH, MoH & Global Tuberculosis report.
	6.8.b Incidence, prevalence and death rates associated with tuberculosis (deaths per 100,000)	194	73.0	53.0	15.0	14.0	
	6.9.a Tuberculosis notification rate (all new + relapse cases per 100,000)	215	202	155	183	147	Country reported program data – NTCP, DoPH, MoH & Global Tuberculosis report.
7.C	7.8 Proportion of population using an improved drinking water source (%)	-	90.0	91.0	90.0	90.0	NHS 2000, PHCB 2005, BMIS 2010 & NHS 2012.
	7.9 Proportion of population using an improved sanitation facility (%)	-	88.0*	87.3*	58.4#	66.3+	

- Indicates: Data Not Available; * Includes Pit Latrines w/out slab; # Excludes Shared facilities; + Includes shared facilities.

PART IV National Health Indicators

Life expectancy, fertility and mortality							
Sl.#	Indicators	Year					Source
		1994	2000	2005	2010	2015	
1	Life expectancy at birth [years]	66.1	-	66.3	68.9 (projected)	-	NHS 1994, PHCB 2005, Population Projections of Bhutan 2005-2030, NSB.
2	Crude birth rate (CBR) [births per 1000 population]	39.9	34.1	20.0	19.7	17.9	NHS 1994, NHS 2000, PHCB 2005, BMIS 2010 & NHS 2012.
3	Total Fertility Rate (TFR) [children per woman]	5.6	4.7	3.6	2.6	2.3	NHS 1994, NHS 2000, PHCB 2005, BMIS 2010 & NHS 2012.
4	General fertility rate (GFR) [births per 1000 women 15-49 years]	173	143	79.4	-	72.0	NHS 1994, NHS 2000, PHCB 2005 & NHS 2012.
5	Adolescent birth/fertility rate [births per 1000 adolescent women 15-19 years]	120	61.7	-	59.0	28.4	NHS 1994, NHS 2000, BMIS 2010 & NHS 2012.
6	Crude death rate (CDR) [deaths per 1000 population]	9.0	8.6	7.0	-	6.2	NHS 1994, NHS 2000, PHCB 2005 & NHS 2012.
7	Under-five mortality rate (U5MR) [deaths per 1000 live births]	96.9	84.0	61.5	69.0	37.3	NHS 1994, NHS 2000, PHCB 2005, BMIS 2010 & NHS 2012.
8	Infant mortality rate (IMR) [deaths per 1000 live births]	70.7	60.5	40.1	47.0	30.0	NHS 1994, NHS 2000, PHCB 2005, BMIS 2010 & NHS 2012.
9	Maternal mortality ratio (MMR) [deaths per 100,000 live births]	380	255	-	-	86.0	NHS 1994, NHS 2000 & NHS 2012.
10	Sex ratio at birth [males per 100 females]	105	106	101	-	104	NHS 1994, NHS 2000, PHCB 2005 & NHS 2012.
11	Sex ratio of the population [males per 100 females]	91.0	94.7	111	-	96.0	NHS 1994, NHS 2000, PHCB 2005 & NHS 2012.

Note: - indicates Data Not Available.

Table 2: Cause-specific morbidity and mortality

Table 2.1 Trends of selected morbidity indicators, 2011 - 2015

Sl.#	Indicators	Year					Source
		2011	2012	2013	2014	2015	
1	Alcohol Liver Diseases incidence (per 10,000 population)	29	29	36	42	41	HMIS, MoH
2	Cancer incidence (per 10,000 population)	14	12	13	13	13	HMIS, MoH
3	Conjunctivitis incidence (per 10,000 population)	487	529	564	567	395	HMIS, MoH
4	Diabetes incidence (per 10,000 population)	53	57	80	134	164	HMIS, MoH
5	Diarrhoea incidence (per 10,000 under 5 children)	2257	2368	1927	2244	2004	HMIS, MoH
6	Depression incidence (per 10,000 population)	7	8	9	8	9	HMIS, MoH
7	Hypertension incidence per 10,000 population	325	375	409	469	458	HMIS, MoH
8	Intestinal Worms incidence (per 10,000 under 5 children)	186	133	129	118	96	HMIS, MoH
9	Malaria incidence (per 10,000 population at risk)	5	2	1	1	2	HMIS, MoH
10	Pneumonia incidence (per 10,000 under 5 children)	974	1204	1080	1138	905	HMIS, MoH
11	Skin infections (per 10,000 population)	1463	1444	1316	1335	1218	HMIS, MoH
12	STD/STI incidence (per 10,000 population)	12	41	59	72	92	HMIS, MoH
13	Tuberculosis prevalence rate (per 10,000 population)	15	16	15	15	13	HMIS, MoH

Table 2.2 Total Morbidity at National Level by gender and age group - 2015

Code#	Name of Diseases	Under 1 Yr		1 - 4 Yrs		5 - 14 Yrs		15 - 49 Yrs		50 - 64 Years		65 + Yrs		Total
		M	F	M	F	M	F	M	F	M	F	M	F	
Infections														
A02*	Diarrhoea	2537	2262	6246	5533	6180	5537	8744	8428	1829	1813	1196	1288	51593
A03*	Dysentery	217	237	676	653	800	859	2367	2186	688	575	446	349	10053
A15*	Tuberculosis	2	2	4	2	14	26	326	324	76	64	53	36	929
A51*	Genital Ulcer/Bubo	0	2	0	1	6	4	131	266	42	74	19	4	549
A54*	Urethral/Vaginal Discharges	0	1	2	6	7	39	1169	2131	148	299	16	11	3829
A63*	Other Sexually Transmitted Disease, excluding HIV/AIDS	2	22	0	1	4	11	761	776	237	176	6	7	2003
A77*	Rickettsial Disease	7	6	17	23	39	28	163	165	57	52	29	19	605
Viral, Protozoal & Helminthic disease														
B01	Chicken Pox	39	22	211	220	977	1031	395	363	36	16	5	4	3319
B15*	Viral Hepatitis	18	16	27	22	63	66	279	207	46	27	26	14	811
B50	Plasmodium falciparum malaria	1	0	4	0	27	16	39	13	4	2	1		107
B51*	Other Malaria	0	0	0	0	3	5	36	9	6	2	1	3	65
B55	Visceral Leishmaniasis (Kala-azar)	0	1	2	1	2	6	5	5	1	1	0	1	25
B65*	Intestinal Worms	35	51	354	357	791	822	1492	1541	514	450	308	259	6974
B86	Scabies	85	72	379	379	1943	1509	1967	1580	319	242	202	144	8821
B95	Streptococcus Group A	10	18	34	91	47	49	94	90	12	14	13	12	484
BAZ*	Other Infections (excluding ear, brain, STI)	463	458	973	973	2830	2701	3527	4048	748	671	362	277	18031
Neoplasms														
C53	Cervical Cancer	0	0	0	0	0	0	0	34	0	35	0	11	80
CZZ*	Other Cancers	0	0	1	1	5	6	44	119	124	126	143	100	669

Note : OPD cases from JDWNRH excluded

Contd/.....Table 2.2 Total Morbidity at National Level by gender and age group - 2015

Code#	Name of Diseases	Under 1 Yr		1 - 4 Yrs		5 - 14 Yrs		15 - 49 Yrs		50 - 64 Years		65 + Yrs		Total
		M	F	M	F	M	F	M	F	M	F	M	F	
Blood diseases														
D00*	Neoplasm (benign + CIS)	0	0	0	4	2	13	22	100	17	29	55	7	249
D50*	Nutritional Anaemia	45	42	210	218	368	664	2121	6132	898	1237	690	764	13389
D55*	Blood & Immune Disorders	11	9	17	17	50	35	162	328	88	110	96	63	986
Endocrine, Metabolic & Nutritional														
E10*	Diabetes	0	0	0	0	1	0	1519	1837	2516	2774	1918	1819	12384
E40*	Malnutrition (exclude child clinic attendance)	13	12	27	39	28	38	41	58	14	20	11	10	311
EZZ*	Other Nutritional & Metabolic Disorders	33	36	73	88	185	234	702	1208	205	309	153	158	3384
Mental disorders														
F10	Mental and behavioral disorder due to alcohol	0	0	0	0	0	2	821	364	140	77	24	14	1442
F19*	Mental and behavioral disorder due to multiple drug use & other use of psychoactive substances	0	0	0	0	0	0	186	63	9	7	1	3	269
F20*	Psychosis	0	0	0	0	0	1	197	240	39	31	4	14	526
F31*	Depression	0	0	0	0	4	4	188	289	66	78	18	20	667
F40*	Anxiety	0	0	1	2	5	9	286	471	186	222	160	182	1524
FZZ*	Other Mental Disorders	1	1	5	7	61	95	661	1335	135	175	33	67	2576
Disease of Nervous system														
G00*	Meningitis/Encephalitis	38	35	10	19	25	25	63	96	10	12	9	7	349
G40*	Epilepsy	9	12	21	39	97	123	526	564	67	52	29	20	1559
GZZ*	Other Nervous including Peripheral Disorders	103	122	503	494	3598	4235	14183	27141	3976	4990	1947	2195	63487

Note : OPD cases from JDWNRH excluded

Contd/.....Table 2.2 Total Morbidity at National Level by gender and age group - 2015

Code#	Name of Diseases	Under 1 Yr		1 - 4 Yrs		5 - 14 Yrs		15 - 49 Yrs		50 - 64 Yrs		65 + Yrs		Total
		M	F	M	F	M	F	M	F	M	F	M	F	
		Years												
Eye & Ear Diseases														
H10	Conjunctivitis	620	615	997	1056	2766	2641	6641	8243	1866	2063	1124	1261	29893
H25*	Cataract	6	6	11	15	58	65	202	253	233	252	323	318	1742
H2Z*	Other Eye Disorders	558	573	968	1116	3378	3918	11413	16105	3824	4606	3109	3338	52906
H65*	Otitis Media	318	331	809	797	2104	1913	2603	2869	494	386	205	180	13009
H2Z*	Other Ear Disorders	159	169	722	708	2131	2157	3832	4224	867	850	576	486	16881
Diseases of Circulatory System														
I00*	Rheumatic Heart Disease	4	3	3	4	11	18	216	291	233	231	173	174	1361
I10*	Hypertension	0	0	0	0	32	59	5495	7837	5342	6231	4775	4875	34646
I20*	Ischaemic Heart Diseases	0	0	0	0	1	0	93	107	132	139	148	148	768
I60*	Cerebro-vascular Diseases	2	5	2	0	5	9	79	77	90	71	164	123	627
IZZ*	Other Circulatory Diseases	46	32	74	64	357	394	1167	1877	561	585	641	591	6389
Respiratory diseases														
J00	Common Cold	9587	9522	20992	20680	32675	34446	52251	62011	10854	11232	6183	5518	275951
J02*	Acute Pharyngitis/Tonsillitis	600	575	2435	2684	8305	9196	16239	20595	2788	2776	1180	984	68357
J12*	Pneumonia	1647	1395	2324	2122	649	555	490	516	192	213	231	191	10525
J2Z*	Other Respiratory & Nose Diseases	1559	1535	2861	2776	4763	5082	11265	13826	3142	3402	2587	2444	55242
Diseases of the Digestive system														
K00*	Diseases of Teeth & Gums	50	37	598	575	2226	2416	5561	6620	1528	1305	868	673	22457
K02	Dental Caries	35	43	1326	1305	6223	6601	12493	16765	3729	3446	1787	1283	55036
K20*	Peptic Ulcer Syndrome	20	36	196	218	1881	2679	17941	24303	4975	6044	2790	2872	63955
K35	Acute Appendicitis	1	0	3	8	51	30	327	295	62	67	30	29	903

Note : OPD cases from JDWNRH excluded

Contd/.....Table 2.2 Total Morbidity at National Level by gender and age group - 2015

Code#	Name of Diseases	Under 1 Yr		1 - 4 Yrs		5 - 14 Yrs		15 - 49 Yrs		50 - 64 Years		65 + Yrs		Total
		M	F	M	F	M	F	M	F	M	F	M	F	
K70	Alcohol Liver Diseases	0	0	0	0	0	0	1077	648	575	391	301	142	3134
K80*	Gall Bladder Diseases	6	8	16	9	59	80	295	660	133	225	71	88	1650
KZZ*	Other Diseases of the Digestive System	977	965	3412	3450	8235	9213	22169	29210	5297	5559	3234	3170	94891
Skin Diseases														
L00*	Skin Infections	1938	1954	6180	6058	13730	11521	21432	18688	4020	3206	2077	1369	92173
LZZ*	Other Disorders of Skin & Subcutaneous-tissues	1832	1893	4931	4955	11060	10665	21561	22064	4282	3849	2183	1710	90985
Diseases of Musculo-skeletal system & Congenital Deformities														
M00*	Arthritis & Arthrosis	1	2	23	33	259	220	2569	3063	1495	1477	1008	931	11081
MZZ*	Other Musculo-skeletal disorders	42	40	422	469	3325	2968	28059	30229	9677	9585	5596	4801	95213
Genito-Urinary diseases														
N30	Cystitis	6	7	39	54	62	103	668	2053	174	286	93	131	3676
N61*	Infection of the Breasts, including Puerperium	0	0	0	0	0	7	0	450	0	17	0	3	477
N62*	Other Disease of the Breast	0	1	0	8	2	65	21	1415	3	93	2	31	1641
N70*	Pelvic Inflammatory Disease	0	0	0	0	0	7	0	687	0	56	0	8	758
N91*	Menstrual Disturbances	0	0	0	0	0	146	0	4146	0	513	0	29	4834
NZZ*	Other Kidney, UT/ Genital Disorders	70	79	459	520	1126	1382	6253	21652	1513	2573	1138	1064	37829
Pregnancy, Childbirth and Puerperium														
O00*	Abortions	0	0	0	0	0	2	0	1564	0	0	0	0	1566
O13*	Pregnancy Induced Hypertension	0	0	0	0	0	1	0	565	0	0	0	0	566
O20*	Ante-Partum Haemorrhage & Placenta Previa	0	0	0	0	0	0	0	116	0	0	0	0	116

Note : OPD cases from JDWNRH excluded

Contd/Table 2.2 Total Morbidity at National Level by gender and age group - 2015

Code#	Name of Diseases	Under 1 Yr		1 - 4 Yrs		5 - 14 Yrs		15 - 49 Yrs		50 - 64 Years		65 + Yrs		Total
		M	F	M	F	M	F	M	F	M	F	M	F	
O32	Malpresentation	0	0	0	0	0	0	0	0	0	0	0	0	79
O63	Prolonged Labour	0	0	0	0	1	0	256	0	0	0	0	0	257
O64*	Obstructed Labour	0	0	0	0	0	0	76	0	0	0	0	0	76
O72	Post Partum Haemorrhage	0	0	0	0	1	0	101	0	0	0	0	0	102
O73	Retained Placenta	0	0	0	0	1	0	140	0	0	0	0	0	141
O85*	Puerperal Sepsis	0	0	0	0	0	0	53	0	0	0	0	0	53
OZZ*	Other complications of pregnancy	0	0	0	0	0	23	0	11289	0	0	0	0	11312
Perinatal Conditions														
P05*	Low Birth Weight	147	139	0	0	0	0	0	0	0	0	0	0	286
P95	Foetal Death & Stillbirth	23	20	0	0	0	0	0	0	0	0	0	0	43
P96	Neonatal Death	11	6	0	0	0	0	0	0	0	0	0	0	17
PZZ*	Conditions Originating in the Perinatal Period	1530	1298	0	0	0	0	0	0	0	0	0	0	2828
Malformations														
QZZ*	Malformations	90	88	27	30	34	28	30	30	27	3	2	1	361
Injuries & Trauma														
T65	Mushroom Poisoning (Toxic effect of other unspecified substances)	2	3	23	29	36	30	106	99	15	9	6	4	362
V01*	Transport Accidents	1	3	36	29	130	91	1194	507	194	93	64	41	2383
W00*	Accidental Falls	26	23	369	292	1475	712	2567	1418	586	464	324	252	8508
W50*	Other Bites & Stings (excluding dog bite)	20	27	268	223	590	445	1059	1052	239	199	110	71	4303
W54	Dog Bite	11	10	351	280	1308	794	1896	1452	405	273	200	119	7099
W65*	Drowning & Submersion	0	0	2	3	20	7	17	6	9	6	1	3	74

Note : OPD cases from JDWNRH excluded

Contd./.....Table 2.2 Total Morbidity at National Level by gender and age group - 2015

Code#	Name of Diseases	Under 1 Yr		1 - 4 Yrs		5 - 14 Yrs		15 - 49 Yrs		50 - 64		65 + Yrs		Total
		M		F		M		F		M		F		
		M	F	M	F	M	F	M	F	M	F	M	F	
W86*	Exposure to Electric Current	0	0	5	2	7	5	32	9	3	1	1	0	65
X00*	Contact with Heat & Hot substances & exposure to smoke, fire, flames	45	42	313	273	342	275	576	523	106	83	40	39	2657
X20	Snake Bite	1	0	5	0	19	8	88	60	21	13	7	7	229
X21*	Contact with Venomous animals (excluding Snake bite)	0	1	12	6	22	13	56	30	17	3	3	6	169
X60*	Intentional Self Harm	0	3	12	10	70	41	295	225	43	28	17	6	750
Y96	Work Related Injuries	15	11	322	259	3294	1688	13724	5912	2641	1409	1025	505	30805
YYY*	Others (injuries other than above & unknown cause of injury)	104	66	895	632	3835	1856	7395	4474	1361	770	539	338	22265
Other Conditions														
YZZ*	Complications of Health Care	24	28	58	60	80	84	276	446	76	38	21	26	1217
ZZZ*	ANC, Immunization & Other counseling	2921	3325	4276	4316	2189	2420	22653	22606	1268	1141	773	601	68489
	Total	28724	28358	66574	65318	137087	135275	347593	437375	88321	91023	53703	48866	1528217
Total Old Cases all causes														
ZZZZ	Total Old Cases all causes	1207061												

Note : OPD cases from JDWNRH excluded

Table 2.3 Under 5 total Morbidity at National Level by gender and age group - 2015

Code#	Name of Diseases	Under 1 Year		1 - 4 Years		Total
		Male	Female	Male	Female	
Infections						
A02*	Diarrhoea	2537	2262	6246	5533	16578
A03*	Dysentery	217	237	676	653	1783
A15*	Tuberculosis	2	2	4	2	10
A51*	Genital Ulcer/Bubo	0	2	0	1	3
A54*	Urethral/Vaginal Discharges	0	1	2	6	9
A63*	Other Sexually Transmitted Disease, excluding HIV/AIDS	2	22	0	1	25
A77*	Rickettsial Disease	7	6	17	23	53
Viral, Protozoal & Helminthic disease						
B01	Chicken Pox	39	22	211	220	492
B15*	Viral Hepatitis	18	16	27	22	83
B50	Plasmodium falciparum malaria	1	0	4	0	5
B51*	Other Malaria	0	0	0	0	0
B55	Visceral Leishmaniasis (Kala-azar)	0	1	2	1	4
B65*	Intestinal Worms	35	51	354	357	797
B86	Scabies	85	72	379	379	915
B95	Streptococcus Group A	10	18	34	91	153
BAZ*	Other Infections (excluding ear, brain, STI)	463	458	973	973	2867
Neoplasm						
C53	Cervical Cancer	0	0	0	0	0
CZZ*	Other Cancers	0	0	1	1	2
Blood diseases						
D00*	Neoplasm (benign + CIS)	0	0	0	4	4
D50*	Nutritional Anaemia	45	42	210	218	515
D55*	Blood & Immune Disorders	11	9	17	17	54
Endocrine, Metabolic & Nutritional						
E10*	Diabetes	0	0	0	0	0
E40*	Malnutrition (exclude child clinic attendance)	13	12	27	39	91
EZZ*	Other Nutritional & Metabolic Disorders	33	36	73	88	230
Mental disorders						
F10	Mental and behavioral disorder due to alcohol	0	0	0	0	0
F19*	Mental and behavioral disorder due to multiple drug use & other use of psychoactive substances	0	0	0	0	0
F20*	Psychosis	0	0	0	0	0
F31*	Depression	0	0	0	0	0
F40*	Anxiety	0	0	1	2	3
FZZ*	Other Mental Disorders	1	1	5	7	14

Note : OPD cases from JDWNRH excluded

Contd./...Table 2.3 Under 5 total Morbidity at National Level by gender and age group - 2015

Code#	Name of Diseases	Under 1 Year		1 - 4 Years		Total
		Male	Female	Male	Female	
Disease of Nervous system						
G00*	Meningitis/Encephalitis	38	35	10	19	102
G40*	Epilepsy	9	12	21	39	81
GZZ*	Other Nervous including Peripheral Disorders	103	122	503	494	1222
Eye & Ear Diseases						
H10	Conjunctivitis	620	615	997	1056	3288
H25*	Cataract	6	6	11	15	38
H2Z*	Other Eye Disorders	558	573	968	1116	3215
H65*	Otitis Media	318	331	809	797	2255
HZ2*	Other Ear Disorders	159	169	722	708	1758
Diseases of Circulatory System						
I00*	Rheumatic Heart Disease	4	3	3	4	14
I10*	Hypertension	0	0	0	0	0
I20*	Ischaemic Heart Diseases	0	0	0	0	0
I60*	Cerebro-vascular Diseases	2	5	2	0	9
IZZ*	Other Circulatory Diseases	46	32	74	64	216
Respiratory diseases						
J00	Common Cold	9587	9522	20992	20680	60781
J02*	Acute Pharyngitis/Tonsilitis	600	575	2435	2684	6294
J12*	Pneumonia	1647	1395	2324	2122	7488
JZZ*	Other Respiratory & Nose Diseases	1559	1535	2861	2776	8731
Diseases of the Digestive system						
K00*	Diseases of Teeth & Gums	50	37	598	575	1260
K02	Dental Caries	35	43	1326	1305	2709
K20*	Peptic Ulcer Syndrome	20	36	196	218	470
K35	Acute Appendicitis	1	0	3	8	12
K70	Alcohol Liver Diseases	0	0	0	0	0
K80*	Gall Bladder Diseases	6	8	16	9	39
KZZ*	Other Diseases of the Digestive System	977	965	3412	3450	8804
Skin Diseases						
L00*	Skin Infections	1938	1954	6180	6058	16130
LZZ*	Other Disorders of Skin & Subcutaneous-tissues	1832	1893	4931	4955	13611
Diseases of Musculo-skeletal system & Cogenital Deformities						
M00*	Arthritis & Arthrosis	1	2	23	33	59
MZZ*	Other Musculo-skeletal disorders	42	40	422	469	973
Genito-Urinary diseases						
N30	Cystitis	6	7	39	54	106
N61*	Infection of Breasts, including Puerperium	0	0	0	0	0
N62*	Other Disease of the Breast	0	1	0	8	9

Note : OPD cases from JDWNRH excluded

Contd/...Table 2.3 Under 5 total Morbidity at National Level by gender and age group - 2015

Code#	Name of Diseases	Under 1 Year		1 - 4 Years		Total
		Male	Female	Male	Female	
N70*	Pelvic Inflammatory Disease	0	0	0	0	0
N91*	Menstrual Disturbances	0	0	0	0	0
NZZ*	Other Kidney, UT/ Genital Disorders	70	79	459	520	1128
Perinatal Conditions						
P05*	Low Birth Weight	147	139	0	0	286
P95	Foetal Death & Stillbirth	23	20	0	0	43
P96	Neonatal Death	11	6	0	0	17
PZZ*	Conditions Originating in the Perinatal Period	1530	1298	0	0	2828
Malformations						
QZZ*	Malformations	90	88	27	30	235
Injuries & Trauma						
T65	Mushroom Poisoning (Toxic effect of other unspecified substances)	2	3	23	29	57
V01*	Transport Accidents	1	3	36	29	69
W00*	Accidental Falls	26	23	369	292	710
W50*	Other Bites & Stings	20	27	268	223	538
W54	Dog Bite					
W65*	Drowning & Submersion	11	10	351	280	652
W86*	Exposure to Electric Current	0	0	2	3	5
X00*	Contact with Heat & Hot substances & exposure to smoke, fire, flames	0	0	5	2	7
X20	Snake Bite	45	42	313	273	673
X21*	Contact with Venomous animals (excluding Snake bite)	1	0	5	0	6
X60*	Intentional Self Harm	0	1	12	6	19
Y96	Work Related Injuries	0	3	12	10	25
YYY*	Others (injuries other than above & unknown cause of injury)	15	11	322	259	607
Other Conditions						
YZZ*	Complications of Health Care	24	28	58	60	170
ZZZ*	ANC, Immunization & Other counseling	2921	3325	4276	4316	14838
Total		28724	28358	66574	65318	188974

Note : OPD cases from JDWNRH excluded

Table 2.4 National Leprosy Report - 2015

Sl.#	Type of patients	PATIENTS (MDT)				Total
		MB		PB		
		M	F	M	F	
1	Total patient at the end of year 2014	11	7	0	0	18
2	+ New patients detected	8	6	0	0	14
3	+ Transferred in etc.	1	1	0	0	2
4	+ Relapse	1	2	0	0	3
6	- Released (RFT)	0	0	0	0	0
7	- Died	10	6	0	0	16
8	- Lost to control	0	0	0	0	0
9	- Transferred out	1	0	0	0	1
Total patient at the end of year 2014		9	9	0	0	18

Note :

MB = Multi bacillary

PB = Pauci bacillary

Table 2.5 TB Sputum examination report - 2015

Sl.#	Gender	Total sputum examined for AFB	Total with sputum smear positive	Percentage of smear positive
1	Male	4676	220	4.7
2	Female	4558	251	5.5
Total		9234	471	5.1

Table 2.6 TB Case Notifications - 2015

Type	Age/Gender																		Total
	0 - 4		5 - 14		15 - 24		25 - 34		35 - 44		45 - 54		55 - 64		65 +				
	M	F	M	F	M	F	M	F	M	F	M	F	M	F	M	F			
Pulmonary new positive	1	0	1	8	77	98	31	62	14	20	18	12	8	6	19	9	384		
Relapse among new smear positive	0	0	0	1	4	6	7	12	6	6	2	5	6	0	2	0	57		
Failure among new positive	0	0	0	0	3	2	0	2	2	0	0	0	0	0	1	1	11		
Default among new smear positive	0	0	0	0	0	0	0	0	1	0	0	0	0	0	0	0	1		
New pulmonary negative	0	0	1	2	7	7	8	13	3	3	2	2	2	2	3	0	55		
Extra-pulmonary	3	4	13	10	67	72	61	70	32	30	24	12	13	13	29	14	467		
Total	4	4	15	21	158	185	107	159	58	59	46	31	29	21	54	24	975		

Table 2.7 TB Smear conversion at 2/3 months - 2015

Sl.#	Type	Total registered		Negative			Positive			No Result			Smear conversion in percent
		M	F	M	F	M	F	M	F	M	F		
												1	
2	Relapse	18	22	11	18	4	4	3	0	72.50			
3	Failure	5	5	2	5	2	0	1	0	70.00			
4	Default	0	0	0	0	0	0	0	0	0.00			

Table 2.8 TB Treatment outcome for the past year

Type	Total registered		Cured		Treatment completed		Died		Failure		Defaulted		Outcome not known	
	M	F	M	F	M	F	M	F	M	F	M	F	M	F
Pulmonary new positive	223	184	189	165	3	0	7	7	20	12	3	0	1	0
New pulmonary negative	45	42	0	0	42	39	1	1	0	1	1	1	1	0
New Extra-pulmonary	183	224	0	0	170	207	10	9	2	3	0	2	2	2
Relapse	34	20	25	14	2	1	4	0	2	5	1	0	0	0
Failure	5	7	4	4	0	0	0	0	1	3	0	0	0	0
Default	3	0	3	0	0	0	0	0	0	0	0	0	0	0

Table 2.9 Mortality Report from Health Facility, 2011 - 2015

Code#	Name of Disease	Year				
		2011	2012	2013	2014	2015
Infections						
A02*	Diarrhoea	4	3	1	3	2
A03*	Dysentery	4	2	1	8	0
A15*	Tuberculosis	17	32	26	20	29
A51*	Genital Ulcer/Bubo	0	0	0	0	0
A54*	Urethral/Vaginal discharges	0	0	0	0	0
A63*	Other Sexually Transmitted Disease, excluding HIV/AIDS	1	0	1	2	1
A77*	Rickettsial Disease	1	0	1	0	4
Viral, Protozoal & Helminthic disease						
B01	Chicken Pox	0	0	0	0	0
B15*	Viral Hepatitis	4	4	1	2	2
B50	Plasmodium falciparum malaria	3	1	0	0	1
B51*	Other Malaria	3	1	0	0	0
B55	Visceral Leishmaniasis (Kala-azar)	0	0	1	0	0
B65*	Intestinal Worms	0	1	0	0	0
B86	Scabies	0	0	0	1	0
B95	Streptococcus Group A	0	0	0	0	2
ABZ*	Other Infections (excluding ear, brain, STI)	18	46	104	84	91
Neoplasm						
C53	Cervical Cancer	7	2	5	3	6
CZZ*	Other Cancers	83	84	90	71	100
D00*	Neoplasm (benign + CIS)	2	1	4	6	1
Blood diseases						
D50*	Nutritional Anaemia	3	5	8	5	11
D55*	Blood & Immune Disorders	14	14	4	7	10
Endocrine, Metabolic & Nutritional						
E10*	Diabetes	30	23	30	13	28
E40*	Malnutrition (exclude child clinic attendance)	5	5	1	0	0
EZZ*	Other Nutritional & Metabolic Disorders	2	7	5	2	11
Mental disorders						
F10	Mental and behavioral disorder due to alcohol	1	2	1	1	2
F19*	Mental and behavioral disorder due to multiple drug use & other use of psychoactive substances	0	0	0	0	0
F20*	Psychosis	0	0	0	1	1

Contd/...Table 2.9 Mortality Report from Health Facility, 2011 - 2015

Code#	Name of Disease	Year				
		2011	2012	2013	2014	2015
F31*	Depression	0	1	0	1	0
F40*	Anxiety	1	0	0	0	0
FZZ*	Other Mental Disorders	0	1	0	1	1
Disease of Nervous system						
G00*	Meningitis/Encephalitis	20	28	20	34	33
G41*	Epilepsy	4	4	4	4	7
GZZ*	Other Nervous including Peripheral Disorders	10	30	23	23	17
Eye & Ear Diseases						
H10	Conjunctivitis	1	0	0	0	0
H25*	Cataract	0	0	0	0	4
H00*	Other Eye Disorders	0	0	0	3	1
H65*	Otitis Media	0	0	0	0	0
HZZ*	Other Ear Disorders	3	0	0	1	0
Diseases of Circulatory System						
I00*	Rheumatic Heart Disease	11	14	5	11	7
I10*	Hypertension	18	25	20	16	27
I20*	Ischaemic Heart Diseases	14	14	9	10	9
I60*	Cerebro-vascular Diseases	45	47	48	29	84
IZZ*	Other Circulatory Diseases	81	100	129	118	112
Respiratory diseases						
J00	Common Cold	0	1	2	2	3
J02*	Acute Pharyngitis/Tonsillitis	0	3	1	5	3
J12*	Pneumonia	55	77	67	63	63
JZZ*	Other Respiratory & Nose Diseases	71	102	107	114	118
Diseases of the Digestive system						
K02	Dental Caries	0	0	0	0	2
K00*	Diseases of Teeth & Gums	1	0	0	0	0
K20*	Peptic Ulcer Syndrome	8	4	6	6	1
K35	Acute Appendicitis	1	2	1	1	3
K70	Alcohol Liver Diseases	169	140	129	176	158
K80*	Gall Bladder Diseases	1	2	3	0	7
KZZ*	Other Diseases of the Digestive System	61	62	64	68	67

Contd/...Table 2.9 Mortality Report from Health Facility, 2011 - 2015

Code#	Name of Disease	Year				
		2011	2012	2013	2014	2015
Skin Diseases						
L00*	Skin Infections	1	4	2	0	1
LZZ*	Other Disorders of Skin & Subcutaneous-tissues	11	15	0	4	3
Diseases of Musculo-skeletal system & Congenital Deformities						
M00*	Arthritis & Arthrosis	3	1	1	1	0
MZZ*	Other Musculo-skeletal disorders	6	4	3	9	7
Genito-Urinary diseases						
N30	Cystitis	0	0	3	2	3
N61*	Infection of Breasts, including Puerperium	1	1	0	0	0
N62*	Other Disease of the Breast	1	1	0	1	0
N70*	Pelvic Inflammatory Disease	0	1	0	0	0
N91*	Menstrual Disturbances	2	1	0	0	0
NZZ*	Other Kidney, UT/ Genital Disorders	60	67	67	66	59
Pregnancy, Childbirth and Puerperium						
O00*	Abortions	0	1	1	0	1
O13*	Pregnancy Induced Hypertension	0	0	0	0	1
O20*	Ante-Partum Haemorrhage & Placenta Previa	0	0	0	0	0
O32	Malpresentation	1	0	0	0	0
O63	Prolonged Labour	3	0	0	0	0
O64*	Obstructed Labour	0	0	0	0	0
O72	Post Partum Haemorrhage	0	0	3	0	2
O73	Retained Placenta	1	0	0	2	0
O85*	Puerperal Sepsis	1	0	0	0	0
OZZ*	Other complications of pregnancy	1	1	1	3	4
Perinatal Conditions						
P05*	Low Birth Weight	11	12	9	10	40
P95	Foetal Death & Stillbirth	5	42	25	27	43
P96	Neonatal Death	57	91	71	62	17
PZZ*	Conditions Originating in the Perinatal Period	16	23	23	16	45
Malformations						
QZZ*	Malformations	8	9	17	6	22
Injuries & Trauma						
T65	Mushroom poisoning (Toxic effect of other unspecified substances)	2	3	6	3	2
VZZ*	Transport Accidents	18	17	8	14	9
W00*	Accidental falls	14	19	10	7	9

Contd/...Table 2.9 Mortality Report from Health Facility, 2011 - 2015

Code#	Name of Disease	Year				
		2011	2012	2013	2014	2015
W50*	Other bites and sting (excluding dog bite)	0	0	0	0	1
W54	Dog bites	1	0	0	0	0
W65*	Drowning & submersion	0	0	0	2	2
W86*	Exposure to electric current	0	2	0	0	1
X00*	Contact with heat & hot substances and exposure to smoke, fire, flames	1	4	0	3	3
X20	Snake bite	2	1	1	0	1
X21*	Contact with venomous animals. (exclude snake bite)	0	1	0	1	0
X60*	Intentional self harm	3	5	3	3	2
Y96	Work Related Injuries	5	7	1	2	4
YYY*	Others (injuries other than above & unknown cause of injury)	26	41	26	20	32
Other conditions						
YZZ*	Complications of Health Care	0	0	2	3	2
ZZZ*	ANC, Immunization & Other counseling	5	6	1	7	4

Note: Shaded cells are new variables added/deleted in the system.

Table 2.10 Malaria Mortality - 2015

Sl.#	Death	Age/Gender								Total
		0 – 4 years		5 – 14 years		15 – 49 years		50 + years		
		Male	Female	Male	Female	Male	Female	Male	Female	
1	Total Deaths	0	0	0	0	0	0	0	0	0

Table 3: Facility based disease case findings and case-loads

Table 3.1 Disease cases and case-load indicators

Sl. #	Indicators	Year					Source
		2011	2012	2013	2014	2015	
1	Total new cases seen in Bhutan (OPD cases from JDWNRH excluded)	1,352,243	1,430,946	1,429,919	1,576,634	1,528,217	HMIS, MoH
2	Total Outpatient cases seen in all hospitals (OPD cases from JDWNRH excluded)	703,509	751,781	766,596	854,273	823,278	HMIS, MoH
3	Total Inpatient cases seen in all hospitals	58,706	60,398	50,179	61,324	73,825	HMIS, MoH
4	Total morbidity cases seen by BHUs	590,028	618,732	613,087	656,631	608,723	HMIS, MoH

FACT-SHEET: Facility based disease cases and case-loads

Figure 3.1

Total new cases and total morbidity cases seen by BHUs Figure 3.2 - Total Outpatient & Inpatient cases seen in all hospitals

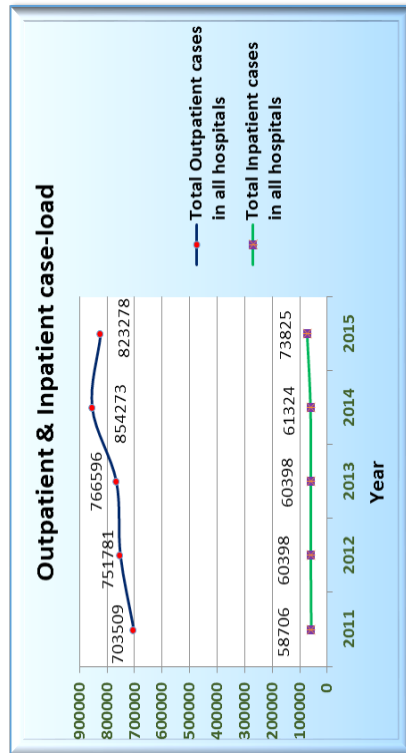


Table 3.2 Type of Cases Seen in Bhutan, 2011 - 2015

Code#	Name of Disease	Year				
		2011	2012	2013	2014	2015
Infections						
A02*	Diarrhoea	60188	64002	51373	58114	51593
A03*	Dysentery	18281	16452	12678	11571	10053
A15*	Tuberculosis	1057	987	954	1187	929
A51*	Genital Ulcer/Bubo	248	306	256	558	549
A54*	Urethral/Vaginal discharges	2150	1921	2960	3490	3829
A63*	Other Sexually Transmitted Disease, excluding HIV/AIDS	824	748	1143	1316	2003
A77*	Rickettsial Disease	118	218	351	450	605
Viral, Protozoal & Helminthic disease						
B01	Chicken Pox	3308	2098	2520	2850	3319
B15*	Viral Hepatitis	744	399	537	746	811
B50	Plasmodium falciparum malaria	158	61	46	43	107
B51*	Other Malaria	226	75	42	55	65
B55	Visceral Leishmaniasis (Kala-azar)	30	27	87	98	25
B65*	Intestinal Worms	8673	7726	6869	7091	6974
B86	Scabies	6480	6867	8267	9616	8821
B95	Streptococcus Group A	95	133	39	215	484
ABZ*	Other Infections (excluding ear, brain, STI)	11300	14117	15564	16776	18031
Neoplasm						
C53	Cervical Cancer	95	63	52	49	80
CZZ*	Other Cancers	595	571	603	656	669
D00*	Neoplasm (benign + CIS)	290	249	268	233	249
Blood diseases						
D50*	Nutritional Anaemia	10839	11537	14537	14987	13389
D55*	Blood & Immune Disorders	907	947	1104	1064	986
Endocrine, Metabolic & Nutritional						
E10*	Diabetes	3740	4097	5890	9976	12384
E40*	Malnutrition (exclude child clinic attendance)	331	469	480	350	311
EZZ*	Other Nutritional & Metabolic Disorders	1931	1891	1662	3492	3384

Note : OPD cases from JDWNRH excluded

Contd/...Table 3.2 Type of Cases Seen in Bhutan, 2011 - 2015

Code#	Name of Disease	Year				
		2011	2012	2013	2014	2015
Mental disorders						
F10	Mental and behavioral disorder due to alcohol	495	463	774	129	1442
F19*	Mental and behavioral disorder due to multiple drug use & other use of psychoactive substances	110	110	137	447	269
F20*	Psychosis	97	94	132	564	526
F31*	Depression	519	559	653	1044	667
F40*	Anxiety	607	729	654	2146	1524
FZZ*	Other Mental Disorders	742	1089	1170	129	2576
Disease of Nervous system						
G00*	Meningitis/Encephalitis	263	316	302	292	349
G41*	Epilepsy	1064	1215	1201	1496	1559
GZZ*	Other Nervous including Peripheral Disorders	49482	55802	58897	64471	63487
Eye & Ear Diseases						
H10	Conjunctivitis	34482	38138	41367	42226	29893
H25*	Cataract	1079	885	1858	1617	1742
H00*	Other Eye Disorders	37460	41995	47762	52186	52906
H65*	Otitis Media	14380	14632	14757	14541	13009
HZZ*	Other Ear Disorders	13229	14384	16773	17726	16881
Diseases of Circulatory System						
I00*	Rheumatic Heart Disease	843	718	664	1629	1361
I10*	Hypertension	23051	27023	29962	34941	34646
I20*	Ischaemic Heart Diseases	281	447	290	1069	768
I60*	Cerebro-vascular Diseases	347	334	402	625	627
IZZ*	Other Circulatory Diseases	5411	6831	7754	9313	6389
Respiratory diseases						
J00	Common Cold	267109	291528	271664	298044	275951
J02*	Acute Pharyngitis/Tonsillitis	63410	70326	64883	69107	68357
J12*	Pneumonia	11185	13622	12016	13091	10525
JZZ*	Other Respiratory & Nose Diseases	49292	55266	54284	57610	55242
Diseases of the Digestive system						
K00*	Diseases of Teeth & Gums	17615	17511	18594	23014	22457
K02	Dental Caries	38929	37388	41287	54065	55036
K20*	Peptic Ulcer Syndrome	69058	69110	68991	69046	63955
K35	Acute Appendicitis	814	662	962	1248	903
K70	Alcohol Liver Diseases	2050	2059	2631	3140	3134

Note : OPD cases from JDWNRH excluded

Contd/...Table 3.2 Type of Cases Seen in Bhutan, 2011 - 2015

Code#	Name of Disease	Year				
		2011	2012	2013	2014	2015
K80*	Gall Bladder Diseases	1204	722	988	1432	1650
KZZ*	Other Diseases of the Digestive System	70899	77041	82156	90787	94891
Skin Diseases						
L00*	Skin Infections	103618	104141	96433	99515	92173
LZZ*	Other Disorders of Skin & Subcutaneous-tissues	73593	77146	81141	90210	90985
Diseases of Musculo-skeletal system & Cogenital Deformities						
M00*	Arthritis & Arthrosis	12641	10733	10586	13055	11081
MZZ*	Other Musculo-skeletal disorders	78650	83371	89240	95400	95213
Genito-Urinary diseases						
N30	Cystitis	2648	2801	3932	4434	3676
N61*	Infection of Breasts, including Puerperium	824	715	657	754	477
N62*	Other Disease of the Breast	1674	1500	1460	1627	1641
N70*	Pelvic Inflammatory Disease	917	844	623	1066	758
N91*	Menstrual Disturbances	6008	5168	4927	4982	4834
NZZ*	Other Kidney, UT/ Genital Disorders	30394	32263	34492	36263	37829
Pregnancy, Childbirth and Puerperium						
O00*	Abortions	1339	1338	1342	1427	1566
O13*	Pregnancy Induced Hypertension	676	640	457	524	566
O20*	Ante-Partum Haemorrhage & Placenta Previa	174	154	98	119	116
O32	Malpresentation	98	106	97	76	79
O63	Prolonged Labour	890	963	569	275	257
O64*	Obstructed Labour	372	252	217	48	76
O72	Post Partum Haemorrhage	128	163	94	126	102
O73	Retained Placenta	220	179	165	133	141
O85*	Puerperal Sepsis	86	71	73	111	53
OZZ*	Other complications of pregnancy	7025	7450	8916	10213	11312
Perinatal Conditions						
P05*	Low Birth Weight	116	214	234	241	286
P95	Foetal Death & Stillbirth	47	42	25	28	43
P96	Neonatal Death	74	91	72	62	17
PZZ*	Conditions Originating in the Perinatal Period	860	1346	1783	2130	2828
Malformations						
QZZ*	Malformations	234	355	328	299	361

Note : OPD cases from JDWNRH excluded

Contd/...Table 3.2 Type of Cases Seen in Bhutan, 2011 - 2015

Code#	Name of Disease	Year				
		2011	2012	2013	2014	2015
Injuries & Trauma						
T65	Mushroom poisoning (Toxic effect of other unspecified substances)	293	289	357	510	362
V1*	Transport Accidents	1942	2104	2031	2344	2383
W00*	Accidental falls	8140	7585	7908	8072	8508
W50*	Other bites and sting (excluding dog bite)	3698	3545	4227	4546	4303
W54	Dog bites	5913	5353	5573	6791	7099
W65*	Drowning & submersion	41	65	41	156	74
W86*	Exposure to electric current	68	66	74	71	65
X00*	Contact with heat & hot substances and exposure to smoke, fire, flames	3041	2771	2786	2788	2657
X20	Snake bite	206	226	191	210	229
X21*	Contact with venomous animals. (exclude snake bite)	175	128	103	167	169
X60*	Intentional self harm	546	502	682	513	750
Y96	Work Related Injuries	27929	28705	29303	30664	30805
YYY*	Others (injuries other than above & unknown cause of injury)	19789	20819	21992	22853	22265
Other conditions						
YZZ*	Complications of Health Care	707	755	932	1814	1217
ZZZ*	ANC, Immunization & Other counseling	48334	49027	43511	58867	68489
Total		1418817	1352243	1430946	1576634	1528217
Total Old Cases all causes						
ZZZZ*	Total Old Cases all causes	532203	560012	568740	724741	1207061

Note : OPD cases from JDWNRH excluded

Table 3.3 Outpatient Cases seen in all Hospitals – 2015

Code#	Name of Diseases	Under 1 Yr		1 – 4 Yrs		5 – 14 Yrs		15 – 49 Yrs		50 – 64 Years		65 + Yrs		Total
		M	F	M	F	M	F	M	F	M	F	M	F	
Infections														
A02*	Diarrhoea	1500	1385	3533	3138	2935	2461	4915	4490	882	843	475	476	27033
A03*	Dysentery	115	139	345	354	431	440	1246	1097	309	261	193	121	5051
A15*	Tuberculosis	1	0	2	0	3	4	70	62	39	25	15	14	235
A51*	Genital Ulcer/Bubo	0	1	0	1	0	4	103	246	31	71	16	3	476
A54*	Urethral/Vaginal Discharges	0	0	0	4	3	32	877	1677	118	265	11	10	2997
A63*	Other Sexually Transmitted Disease, excluding HIV/AIDS	1	0	0	0	0	2	582	573	214	165	0	0	1537
A77*	Rickettsial Disease	0	0	1	1	7	2	59	59	15	14	10	3	171
Viral, Protozoal & Helminthic disease														
B01	Chicken Pox	26	14	149	150	409	403	234	201	29	9	4	2	1630
B15*	Viral Hepatitis	10	10	17	11	40	29	209	146	37	19	12	10	550
B50	Plasmodium falciparum malaria	0	0	3	0	23	13	16	6	0	0	0	0	61
B51*	Other Malaria	0	0	0	0	0	1	14	7	0	1		2	25
B55	Visceral Leishmaniasis (Kala-azar)	0	1	1	1	0	1	2	1	0	0	0	0	7
B65*	Intestinal Worms	33	48	232	253	488	524	948	828	328	277	227	180	4366
B86	Scabies	67	45	259	233	681	484	1077	817	155	129	89	48	4084
B95	Streptococcus Group A	8	17	32	87	39	31	75	70	9	10	9	10	397
BAZ*	Other Infections (excluding ear, brain, STI)	111	148	406	419	846	768	1712	2049	353	249	128	87	7276
Neoplasm														
C53	Cervical Cancer	0	0	0	0	0	0	0	3	0	3	0	2	8
CZZ*	Other Cancers	0	0	0	0	0	0	0	0	0	0	0	1	1

Note : OPD cases from JDWNRH excluded

Contd/.....Table 3.3 Outpatient Cases seen in all Hospitals - 2015

Code#	Name of Diseases	Under 1 Yr		1 - 4 Yrs		5 - 14 Yrs		15 - 49 Yrs		50 - 64 Years		65 + Yrs		Total
		M	F	M	F	M	F	M	F	M	F	M	F	
Blood diseases														
D00*	Neoplasm (benign + CIS)	0	0	0	3	0	4	2	6	0	1	0	0	16
D50*	Nutritional Anaemia	17	15	104	109	174	357	1081	3345	534	558	362	345	7001
D55*	Blood & Immune Disorders	0	1	1	0	7	4	64	97	39	37	42	6	298
Endocrine, Metabolic & Nutritional														
E10*	Diabetes	0	0	0	0	0	0	1391	1714	2353	2619	1758	1713	11548
E40*	Malnutrition (exclude child clinic attendance)	5	5	6	13	5	4	6	13	3	9	4	1	74
EZZ*	Other Nutritional & Metabolic Disorders	9	14	46	54	80	94	466	768	134	204	91	110	2070
Mental disorders														
F10	Mental and behavioral disorder due to alcohol	0	0	0	0	0	0	306	145	55	38	8	6	558
F19*	Mental and behavioral disorder due to multiple drug use & other use of psychoactive substances	0	0	0	0	0	0	95	35	7	5	1	2	145
F20*	Psychosis	0	0	0	0	0	0	163	208	36	29	3	14	453
F31*	Depression	0	0	0	0	2	3	126	201	59	68	12	11	482
F40*	Anxiety	0	0	1	1	4	4	250	382	178	215	160	178	1373
FZZ*	Other Mental Disorders	0	0	1	1	23	51	479	1014	90	113	18	33	1823
Disease of Nervous system														
G00*	Meningitis/Encephalitis	2	0	1	5	2	4	16	20	0	0	0	1	51
G40*	Epilepsy	2	6	11	26	58	96	424	454	54	38	15	10	1194
GZZ*	Other Nervous including Peripheral Disorders	27	38	166	155	719	862	4736	7902	1004	1089	483	445	17626

Note : OPD cases from JDWNRH excluded

Contd/.....Table 3.3 Outpatient Cases seen in all Hospitals - 2015

Code#	Name of Diseases	Under 1 Yr		1 - 4 Yrs		5 - 14 Yrs		15 - 49 Yrs		50 - 64 Years		65 + Yrs		Total
		M	F	M	F	M	F	M	F	M	F	M	F	
Eye & Ear Diseases														
H10	Conjunctivitis	445	430	653	691	1567	1487	4542	5084	1037	951	511	433	17831
H25*	Cataract	6	4	7	14	29	41	149	206	196	201	254	228	1335
H2Z*	Other Eye Disorders	411	433	666	749	1978	2302	7844	10272	2413	2644	1886	1805	33403
H65*	Otitis Media	165	175	439	421	1038	931	1838	1916	339	246	128	92	7728
H2Z*	Other Ear Disorders	126	137	566	528	1472	1363	2911	3190	640	600	428	361	12322
Diseases of Circulatory System														
I00*	Rheumatic Heart Disease	2	2	1	4	4	4	145	201	176	168	117	119	943
I10*	Hypertension	0	0	0	0	22	52	4042	5674	4124	4674	3497	3420	25505
I20*	Ischaemic Heart Diseases	0	0	0	0	0	0	67	75	110	125	113	110	600
I60*	Cerebro-vascular Diseases	0	0	0	0	1	6	31	29	26	29	34	32	188
IZZ*	Other Circulatory Diseases	17	12	21	20	56	78	419	574	210	205	227	190	2029
Respiratory diseases														
J00	Common Cold	6303	6154	13180	12377	16261	16183	29211	31087	5337	5081	2746	2224	146144
J02*	Acute Pharyngitis/Tonsillitis	466	459	1873	2005	4878	5070	10309	11987	1744	1535	658	533	41517
J12*	Pneumonia	367	317	635	562	290	267	292	296	107	116	92	59	3400
JZZ*	Other Respiratory & Nose Diseases	952	1007	1810	1770	2633	2675	6586	7630	1695	1700	1177	1074	30709
Diseases of the Digestive system														
K00*	Diseases of Teeth & Gums	35	25	472	434	1312	1371	3914	4350	1007	778	585	427	14710
K02	Dental Caries	34	43	1213	1179	5112	5399	10590	13944	3093	2694	1406	1001	45708
K20*	Peptic Ulcer Syndrome	15	31	154	164	952	1283	10949	14441	2979	3452	1613	1471	37504
K35	Acute Appendicitis	0	0	0	2	3	4	68	64	17	20	4	3	185

Note : OPD cases from JDWNRH excluded

Contd/..... Table 3.3 Outpatient Cases seen in all Hospitals - 2015

Code#	Name of Diseases	Under 1 Yr		1 - 4 Yrs		5 - 14 Yrs		15 - 49 Yrs		50 - 64 Years		65 + Yrs		Total
		M	F	M	F	M	F	M	F	M	F	M	F	
K70	Alcohol Liver Diseases	0	0	0	0	0	0	474	289	272	168	137	68	1408
K80*	Gall Bladder Diseases	6	8	12	8	13	37	140	203	52	66	30	24	599
KZZ*	Other Diseases of the Digestive System	577	582	1963	1936	3619	3911	12987	16669	2773	2706	1451	1454	50628
Skin Diseases														
L00*	Skin Infections	1206	1264	3727	3556	6065	5054	12355	10489	2264	1688	1112	708	49488
LZZ*	Other Disorders of Skin & Subcutaneous-tissues	1161	1210	2939	2777	4819	4361	12170	11840	2157	1814	923	706	46877
Diseases of Musculo-skeletal system & Cogential Deformities														
M00*	Arthritis & Arthrosis	1	0	14	20	99	98	1303	1383	644	621	373	329	4885
MZZ*	Other Musculo-skeletal disorders	24	24	293	345	1906	1692	17532	17797	5412	4896	2860	2180	54961
Genito-Urinary diseases														
N30	Cystitis	3	4	33	38	52	87	555	1689	145	231	73	95	3005
N61*	Infection of Breasts, including Puerperium	0	0	0	0	0	4	0	221	0	7	0	1	233
N62*	Other Disease of the Breast	0	0	0	7	0	47	7	749	1	80	0	26	917
N70*	Pelvic Inflammatory Disease	0	0	0	0	0	4	0	448	0	31	0	2	485
N91*	Menstrual Disturbances	0	0	0	0	0	77	0	2457	0	408	0	13	2955
NZZ*	Other Kidney, UT/Genital Disorders	44	44	259	308	487	682	3437	12273	825	1249	482	481	20571
Pregnancy, Childbirth and Puerperium														
O00*	Abortions	0	0	0	0	0	0	0	251	0	0	0	0	251
O13*	Pregnancy Induced Hypertension	0	0	0	0	0	1	0	210	0	0	0	0	211
O20*	Ante-Partum Haemorrhage & Placenta Previa	0	0	0	0	0	0	0	24	0	0	0	0	24

Note : OPD cases from JDWNRH excluded

Contd/.....Table 3.3 Outpatient Cases seen in all Hospitals - 2015

Code#	Name of Diseases	Under 1 Yr		1 - 4 Yrs		5 - 14 Yrs		15 - 49 Yrs		50 - 64 Years		65 + Yrs		Total
		M	F	M	F	M	F	M	F	M	F	M	F	
O32	Malpresentation	0	0	0	0	0	0	0	0	6	0	0	0	6
O63	Prolonged Labour	0	0	0	0	0	0	0	0	8	0	0	0	8
O64*	Obstructed Labour	0	0	0	0	0	0	0	0	11	0	0	0	11
O72	Post Partum Haemorrhage	0	0	0	0	0	0	0	0	6	0	0	0	6
O73	Retained Placenta	0	0	0	0	0	0	0	0	4	0	0	0	4
O85*	Puerperal Sepsis	0	0	0	0	0	0	0	0	5	0	0	0	5
OZZ*	Other complications of pregnancy	0	0	0	0	0	0	9	0	950	0	0	0	959
Perinatal Conditions														
P05*	Low Birth Weight	2	7	0	0	0	0	0	0	0	0	0	0	9
P95	Foetal Death & Stillbirth	0	0	0	0	0	0	0	0	0	0	0	0	0
P96	Neonatal Death	0	0	0	0	0	0	0	0	0	0	0	0	0
PZZ*	Conditions Originating in the Perinatal Period	102	112	0	0	0	0	0	0	0	0	0	0	214
Malformations														
QZZ*	Malformations	1	0	0	0	2	4	6	6	0	0	1	0	20
Injuries & Trauma														
T65	Mushroom Poisoning (Toxic effect of other unspecified substances)	1	1	5	9	11	7	26	33	3	1	0	0	100
V01*	Transport Accidents	1	1	11	7	68	52	506	275	103	63	32	27	1146
W00*	Accidental Falls	14	11	195	153	618	315	1398	799	286	252	142	116	4299
W50*	Other Bites & Stings	5	16	139	104	243	197	498	490	96	62	47	30	1927
W54	Dog Bite	9	3	194	185	660	389	1039	774	199	118	88	46	3704
W65*	Drowning & Submersion	0	0	0	0	5	1	4	3	2	2	0	1	18

Note : OPD cases from JDWNRH excluded

Contd/.....Table 3.3 Outpatient Cases seen in all Hospitals - 2015

Code#	Name of Diseases	Under 1 Yr		1 - 4 Yrs		5 - 14 Yrs		15 - 49 Yrs		50 - 64 Years		65 + Yrs		Total
		M	F	M	F	M	F	M	F	M	F	M	F	
W86*	Exposure to Electric Current	0	0	2	0	0	0	3	9	2	1	0	0	17
X00*	Contact with Heat & Hot substances & exposure to smoke, fire, flames	11	18	113	96	97	72	208	189	25	26	13	7	875
X20	Snake Bite	0	0	1	0	4	5	24	14	2	2	1	0	53
X21*	Contact with Venomous animals (excluding Snake bite)	0	0	3	1	4	4	38	16	4	1	1	1	73
X60*	Intentional Self Harm	0	1	8	7	23	9	100	56	8	6	7	1	226
Y96	Work Related Injuries	4	3	149	107	963	521	5403	2431	1020	616	405	243	11865
YYY*	Others (injuries other than above & unknown cause of injury)	28	25	419	285	1346	700	3643	2136	606	299	182	112	9781
Other Conditions														
YZZ*	Complications of Health Care	1	0	10	8	32	21	70	93	18	2	6	3	264
ZZZ*	ANC, Immunization & Other counseling	488	542	610	623	216	294	19507	4928	271	118	172	43	27812
Total		14967	14992	38106	36519	65939	63856	209090	229883	49504	48119	28160	24143	823278
Total Old Cases all causes														
ZZZZ	Total Old Cases all causes													
	causes	1003075												

Note : OPD cases from JDWNRH excluded

Table 3.4 Inpatient Cases in all Hospitals - 2015

Code#	Name of Diseases	Under 1 Yr		1 - 4 Yrs		5 - 14 Yrs		15 - 49 Yrs		50 - 64 Years		65 + Yrs		Total	Death
		M	F	M	F	M	F	M	F	M	F	M	F		
Infections															
A02*	Diarrhoea	191	134	329	281	131	121	293	323	80	85	72	94	2134	2
A03*	Dysentery	16	9	26	22	11	14	51	33	12	3	9	9	215	0
A15*	Tuberculosis	0	1	2	1	9	18	252	261	37	38	37	21	677	29
A51*	Genital Ulcer/Bubo	0	1	0	0	3	0	0	1	1	1	2	0	9	0
A54*	Urethral/Vaginal Discharges	0	1	0	0	0	0	10	8	0	2	1	0	22	0
A63*	Other Sexually Transmitted Disease, excluding HIV/AIDS	1	1	0	0	2	0	13	9	3	0	0	0	29	0
A77*	Rickettsial Disease	7	6	16	22	32	25	100	97	31	38	19	14	407	4
Viral, Protozoal & Helminthic disease															
B01	Chicken Pox	4	0	5	5	18	14	12	6	2	0	0	0	66	4
B15*	Viral Hepatitis	7	5	9	9	21	29	63	57	9	7	13	4	233	0
B50	Plasmodium falciparum malaria	1	0	1	0	3	3	20	5	4	1	1	0	39	2
B51*	Other Malaria	0	0	0	0	0	1	18	1	4	0	0	0	24	1
B55	Visceral Leishmaniasis (Kala-azar)	0	0	1	0	1	1	2	1	0	0	0	1	7	0
B65*	Intestinal Worms	0	0	2	2	2	3	2	16	5	5	1	0	38	0
B86	Scabies	5	7	8	3	14	10	3	8	1	1	1	0	61	0
B95	Streptococcus Group A	1	0	0	2	2	2	4	3	0	1	0	0	15	0
BAZ*	Other Infections (excluding ear, brain, STI)	213	177	134	144	161	145	445	518	103	110	97	72	2319	89
Neoplasm															
C53	Cervical Cancer	0	0	0	0	0	0	0	31	0	33	0	8	72	6
CZZ*	Other Cancers	0	0	1	1	5	6	44	119	124	125	143	100	668	100

Contd/.....Table 3.4 Inpatient Cases in all Hospitals - 2015

Code#	Name of Diseases	Under 1 Yr		1 - 4 Yrs		5 - 14 Yrs		15 - 49 Yrs		50 - 64 Years		65 + Yrs		Total	Death
		M	F	M	F	M	F	M	F	M	F	M	F		
Blood diseases															
D00*	Neoplasm (benign + CIS)	0	0	0	1	2	9	16	92	17	28	55	7	227	1
D50*	Nutritional Anaemia	16	10	43	19	15	25	122	269	63	63	64	67	776	7
D55*	Blood & Immune Disorders	11	7	5	7	17	17	36	87	14	28	14	14	257	10
Endocrine, Metabolic & Nutritional															
E10*	Diabetes	0	0	0	0	0	0	119	116	154	150	152	101	792	28
E40*	Malnutrition (exclude child clinic attendance)	8	5	6	10	0	4	1	3	0	0	1	1	39	0
EZZ*	Other Nutritional & Metabolic Disorders	19	18	7	13	9	11	48	86	15	32	13	10	281	11
Mental disorders															
F10	Mental and behavioral disorder due to alcohol	0	0	0	0	0	2	490	195	80	32	13	6	818	2
F19*	Mental and behavioral disorder due to multiple drug use & other use of psychoactive substances	0	0	0	0	0	0	86	24	2	2	0	0	114	0
F20*	Psychosis	0	0	0	0	0	1	33	30	3	2	1	0	70	1
F31*	Depression	0	0	0	0	2	1	61	86	6	10	3	8	177	0
F40*	Anxiety	0	0	0	0	0	4	33	78	8	7	0	4	134	0
FZZ*	Other Mental Disorders	1	1	3	3	9	17	96	119	8	14	4	5	280	1
Disease of Nervous system															
G00*	Meningitis/Encephalitis	36	35	9	14	10	10	18	12	1	3	4	2	154	33
G40*	Epilepsy	7	6	8	13	38	27	89	73	11	11	11	5	299	7
GZZ*	Other Nervous including Peripheral Disorders	13	12	20	25	27	36	311	340	70	47	45	48	994	17

Contd/.....Table 3.4 Inpatient Cases in all Hospitals – 2015

Code#	Name of Diseases	Under 1 Yr		1 - 4 Yrs		5 - 14 Yrs		15 - 49 Yrs		50 - 64 Years		65 + Yrs		Total	Death
		M	F	M	F	M	F	M	F	M	F	M	F		
Eye & Ear Diseases															
H10	Conjunctivitis	2	4	7	6	10	5	20	19	2	4	1	1	81	0
H25*	Cataract	0	0	2	1	8	6	13	7	25	25	54	74	215	0
H2Z*	Other Eye Disorders	6	8	22	34	45	35	114	79	33	28	26	28	458	0
H65*	Otitis Media	9	6	9	17	27	14	34	19	3	4	0	3	145	0
H2Z*	Other Ear Disorders	2	3	14	17	24	24	51	31	4	6	6	5	187	0
Diseases of Circulatory System															
I00*	Rheumatic Heart Disease	1	1	2	0	6	12	43	47	19	19	23	17	190	24
I10*	Hypertension	0	0	0	0	2	3	294	346	290	274	367	313	1889	9
I20*	Ischaemic Heart Diseases	0	0	0	0	1	0	23	16	19	10	27	27	123	84
I60*	Cerebro-vascular Diseases	2	3	2	0	3	3	48	48	63	42	130	91	435	104
IZZ*	Other Circulatory Diseases	17	14	11	7	30	22	245	250	143	124	282	264	1409	24
Respiratory diseases															
J00	Common Cold	195	141	324	292	255	193	518	570	79	63	36	28	2694	1
J02*	Acute Pharyngitis/Tonsillitis	45	34	111	142	239	236	351	524	25	37	24	18	1786	0
J12*	Pneumonia	444	312	414	367	157	133	140	135	64	69	119	97	2451	57
JZZ*	Other Respiratory & Nose Diseases	376	272	439	353	251	224	574	697	291	353	531	490	4851	110
Diseases of the Digestive system															
K00*	Diseases of Teeth & Gums	5	1	15	12	27	20	78	63	18	15	3	5	262	0
K02	Dental Caries	0	0	1	3	16	10	25	38	4	12	3	0	112	0
K20*	Peptic Ulcer Syndrome	3	4	5	2	32	55	600	718	150	133	83	98	1883	1
K35	Acute Appendicitis	1	0	3	2	39	13	216	188	24	33	14	20	553	3

Contd/.....Table 3.4 Inpatient Cases in all Hospitals – 2015

Code#	Name of Diseases	Under 1 Yr		1 - 4 Yrs		5 - 14 Yrs		15 - 49 Yrs		50 - 64 Years		65 + Yrs		Total	Death
		M	F	M	F	M	F	M	F	M	F	M	F		
K70	Alcohol Liver Diseases	0	0	0	0	0	0	540	303	266	187	131	55	1482	153
K80*	Gall Bladder Diseases	0	0	2	0	4	8	138	440	76	155	37	62	922	7
KZZ*	Other Diseases of the Digestive System	126	97	249	201	241	216	1109	1246	323	270	293	173	4544	65
Skin Diseases															
L00*	Skin Infections	65	56	135	99	142	119	328	266	71	37	40	43	1401	1
LZZ*	Other Disorders of Skin & Subcutaneous-tissues	45	52	88	89	150	117	399	310	104	82	106	51	1593	3
Diseases of Musculo-skeletal system & Cogenital Deformities															
M00*	Arthritis & Arthrosis	0	1	3	5	26	6	103	80	46	37	42	23	372	0
MZZ*	Other Musculo-skeletal disorders	4	4	30	29	131	78	669	548	189	140	117	108	2047	5
Genito-Urinary diseases															
N30	Cystitis	3	3	5	16	10	16	109	341	26	53	18	35	635	3
N61*	Infection of Breasts, including Puerperium	0	0	0	0	0	1	0	66	0	0	0	2	69	0
N62*	Other Disease of the Breast	0	1	0	0	0	4	9	70	2	1	2	1	90	0
N70*	Pelvic Inflammatory Disease	0	0	0	0	0	2	0	96	0	8	0	4	110	0
N91*	Menstrual Disturbances	0	0	0	0	0	4	0	134	0	26	0	4	168	0
NZZ*	Other Kidney, UT/ Genital Disorders	15	22	58	56	162	120	712	1767	197	311	246	194	3860	59
Pregnancy, Childbirth and Puerperium															
O00*	Abortions	0	0	0	0	0	1	0	1193	0	0	0	0	1194	1
O13*	Pregnancy Induced Hypertension	0	0	0	0	0	0	0	337	0	0	0	0	337	1
O20*	Ante-Partum Haemorrhage & Placenta Previa	0	0	0	0	0	0	0	79	0	0	0	0	79	0

Contd/.....Table 3.4 Inpatient Cases in all Hospitals - 2015

Code#	Name of Diseases	Under 1 Yr		1 - 4 Yrs		5 - 14 Yrs		15 - 49 Yrs		50 - 64 Years		65 + Yrs		Total	Death
		M	F	M	F	M	F	M	F	M	F	M	F		
		O32	Malpresentation	0	0	0	0	0	0	0	0	70	0		
O63	Prolonged Labour	0	0	0	0	1	0	223	0	0	0	0	0	224	0
O64*	Obstructed Labour	0	0	0	0	0	0	56	0	0	0	0	0	56	0
O72	Post Partum Haemorrhage	0	0	0	0	0	0	76	0	0	0	0	0	76	2
O73	Retained Placenta	0	0	0	0	0	0	116	0	0	0	0	0	116	0
O85*	Puerperal Sepsis	0	0	0	0	0	0	42	0	0	0	0	0	42	0
OZZ*	Other complications of pregnancy	0	0	0	0	0	12	10043	0	0	0	0	0	10055	4
Perinatal Conditions															
P05*	Low Birth Weight	139	125	0	0	0	0	0	0	0	0	0	0	264	40
P95	Foetal Death & Stillbirth	23	19	0	0	0	0	0	0	0	0	0	0	42	42
P96	Neonatal Death	9	5	0	0	0	0	0	0	0	0	0	0	14	14
PZZ*	Conditions Originating in the Perinatal Period	1422	1183	0	0	0	0	0	0	0	0	0	0	2605	40
Malformations															
QZZ*	Malformations	88	88	27	28	32	23	24	19	2	1	1	1	334	22
Injuries & Trauma															
T65	Mushroom Poisoning (Toxic effect of other unspecified substances)	1	2	12	14	15	16	54	45	8	2	1	1	171	1
V01*	Transport Accidents	0	1	11	17	31	24	447	152	57	17	17	10	784	6
W00*	Accidental Falls	8	6	40	34	153	44	351	157	114	76	73	45	1101	6
W50*	Other Bites & Stings	2	2	3	3	20	16	57	49	22	11	9	1	195	1
W54	Dog Bite	1	4	21	22	104	65	260	157	32	22	22	16	726	0
W65*	Drowning & Submersion	0	0	1	1	3	0	5	0	1	1	0	0	12	1

Contd/.....Table 3.4 Inpatient Cases in all Hospitals – 2015

Code#	Name of Diseases	Under 1 Yr		1 – 4 Yrs		5 – 14 Yrs		15 – 49 Yrs		50 - 64 Years		65 + Yrs		Total	Death	
		M	F	M	F	M	F	M	F	M	F	M	F			
W86*	Exposure to Electric Current	0	0	1	0	1	0	10	1	0	0	0	0	13	1	
X00*	Contact with Heat & Hot substances & exposure to smoke, fire, flames	3	5	32	21	21	21	49	42	12	5	2	8	221	3	
X20	Snake Bite	1	0	2	0	10	1	40	27	10	6	3	3	103	0	
X21*	Contact with Venomous animals (excluding Snake bite)	0	0	0	1	2	0	2	2	3	0	0	1	11	0	
X60*	Intentional Self Harm	0	0	0	1	2	2	41	65	4	3	0	0	118	2	
Y96	Work Related Injuries	1	0	2	2	28	11	708	266	91	40	20	10	1179	3	
YYY*	Others (injuries other than above & unknown cause of injury)	25	14	119	82	380	158	1000	583	209	132	105	92	2899	24	
Other Conditions																
YZZ*	Complications of Health Care	5	4	3	1	16	7	45	48	7	6	4	9	155	2	
ZZZ*	ANC, Immunization & Other counseling	31	24	35	19	19	16	100	802	46	29	24	20	1165	2	
Total		3682	2957	2895	2593	3419	2673	13587	27219	4042	3788	3818	3152	73825	1224	
Total Old Cases all causes																
ZZZZ	Total Old Cases all causes															8485

Table 3.5 Morbidity Cases Seen by Basic Health Units - 2015

Code#	Name of Diseases	Under 1 Yr		1 - 4 Yrs		5 - 14 Yrs		15 - 49 Yrs		50 - 64 Years		65 + Yrs		Total
		M	F	M	F	M	F	M	F	M	F	M	F	
Infections														
A02*	Diarrhoea	821	725	2295	2044	3013	2879	3348	3484	806	829	603	681	21528
A03*	Dysentery	84	87	296	269	355	393	1019	1015	349	294	217	202	4580
A51*	Genital Ulcer/Bubo	1	1		1	2	4	4	1		1	0	0	15
A54*	Urethral/Vaginal Discharges	0	0	0	0	2	0	26	18	10	2	1	1	60
A63*	Other Sexually Transmitted Disease, excluding HIV/AIDS	0	0	2	2	4	7	279	424	29	28	4	1	780
Viral, Protozoal & Helminthic disease														
B01	Chicken Pox	7	6	57	61	535	587	132	156	4	7	1	2	1555
B15*	Viral Hepatitis	1	1	1	1	1	7	7	3		1	1	0	24
B50	Plasmodium falciparum malaria	0	0	0	0	1	0	3	2	0	1	0	0	7
B51*	Other Malaria	0	0	0	0	3	3	4	1	2	1	1	1	16
B55	Visceral Leishmaniasis (Kala-azar)	0	0	0	0	1	4	1	3	1	1	0	0	11
B65*	Intestinal Worms	2	3	117	99	293	278	527	686	178	165	76	77	2501
B86	Scabies	13	19	101	135	1217	990	854	724	150	101	107	88	4499
BAZ*	Other Infections (excluding ear, brain, STI)	1	1	2	2	6	16	13	17	3	3	4	2	70
Blood diseases														
D50*	Nutritional Anaemia	12	17	62	90	174	271	897	2451	288	596	247	337	5442
D55*	Blood & Immune Disorders	0	1	11	8	26	14	62	141	35	43	39	43	423

Contd/.....Table 3.5 Morbidity Cases Seen by Basic Health Units - 2015

Code#	Name of Diseases	Under 1 Yr		1 - 4 Yrs		5 - 14 Yrs		15 - 49 Yrs		50 - 64 Years		65 + Yrs		Total
		M	F	M	F	M	F	M	F	M	F	M	F	
Endocrine, Metabolic & Nutritional														
E40*	Malnutrition (exclude child clinic attendance)	0	2	15	15	23	30	32	41	10	11	6	8	193
Mental disorders														
F10	Mental and behavioral disorder due to alcohol	0	0	0	0	0	0	22	24	4	6	3	1	60
F19*	Mental and behavioral disorder due to multiple drug use & other use of psychoactive substances	0	0	0	0	0	0	5	4	0	0	0	1	10
F20*	Psychosis	0	0	0	0	0	0	1	2	0	0	0	0	3
F31*	Depression	0	0	0	0	0	0	1	2	0	0	1	1	5
F40*	Anxiety	0	0	0	1	1	1	3	10	0	0	0	0	16
FZZ*	Other Mental Disorders	0	0	1	3	29	27	83	200	37	45	10	29	464
Disease of Nervous system														
G00*	Meningitis/Encephalitis	0	0	0	0	12	11	29	61	9	9	5	3	139
GZZ*	Other Nervous including Peripheral Disorders	61	71	317	311	2800	3278	8927	18491	2823	3745	1381	1656	43861
Eye & Ear Diseases														
H10	Conjunctivitis	169	179	335	348	1165	1131	1969	2983	788	1055	581	776	11479
H2Z*	Other Eye Disorders	135	129	277	327	1326	1550	3342	5544	1297	1834	1130	1424	18315
H65*	Otitis Media	140	148	351	351	1012	946	707	917	145	132	75	84	5008
HZZ*	Other Ear Disorders	30	29	137	155	611	754	837	970	207	230	136	112	4208
Diseases of Circulatory System														
I10*	Hypertension	0	0	0	0	8	4	1094	1733	855	1189	832	1062	6777
IZZ*	Other Circulatory Diseases	12	6	41	37	265	286	476	1007	202	241	119	128	2820

Contd/.....Table 3.5 Morbidity Cases Seen by Basic Health Units – 2015

Code#	Name of Diseases	Under 1 Yr		1 – 4 Yrs		5 – 14 Yrs		15 – 49 Yrs		50 - 64 Years		65 + Yrs		Total
		M	F	M	F	M	F	M	F	M	F	M	F	
Respiratory diseases														
J00	Common Cold	2984	3132	7241	7770	15564	17465	21549	29058	5140	5769	3217	3093	121982
J02*	Acute Pharyngitis/Tonsillitis	87	80	442	524	3144	3841	5471	7927	982	1171	478	420	24567
J12*	Pneumonia	800	742	1240	1153	197	151	56	77	21	27	20	33	4517
JZZ*	Other Respiratory & Nose Diseases	226	252	590	640	1836	2133	3974	5351	1108	1295	833	837	19075
Diseases of the Digestive system														
K00*	Diseases of Teeth & Gums	10	10	109	121	864	990	1524	2136	474	484	261	229	7212
K02	Dental Caries	1	1	110	118	1067	1162	1805	2650	597	685	353	264	8813
K20*	Peptic Ulcer Syndrome	2	1	36	52	886	1327	6146	8841	1732	2335	1041	1261	23660
K70	Alcohol Liver Diseases	0	0	0	0	0	0	55	48	32	27	26	15	203
KZZ*	Other Diseases of the Digestive System	269	277	1175	1279	4261	4933	7812	10878	2096	2460	1420	1449	38309
Skin Diseases														
L00*	Skin Infections	646	626	2255	2308	7265	6168	646	626	2255	2308	7265	6168	646
LZZ*	Other Disorders of Skin & Subcutaneous-tissues	604	620	1866	2043	5955	6072	604	620	1866	2043	5955	6072	604
Diseases of Musculo-skeletal system & Congenital Deformities														
M00*	Arthritis & Arthrosis	0	1	6	8	134	115	1128	1558	776	779	560	555	5620
MZZ*	Other Musculo-skeletal disorders	13	11	97	91	1267	1175	9547	11361	3897	4303	2455	2348	36565
Genito-Urinary diseases														
N61*	Infection of Breasts, including Puerperium	0	0	0	0	0	2	0	160	0	9	0	0	171
N62*	Other Disease of the Breast	0	0	0	1	2	14	5	582	0	11	0	4	619
N91*	Menstrual Disturbances	0	0	0	0	0	65	0	1508	0	78	0	12	1663
NZZ*	Other Kidney, UT/ Genital Disorders	10	13	135	151	462	568	2038	7375	478	961	395	373	12959

Contd/..... Table 3.5 Morbidity Cases Seen by Basic Health Units - 2015

Code#	Name of Diseases	Under 1 Yr		1 - 4 Yrs		5 - 14 Yrs		15 - 49 Yrs		50 - 64 Years		65 + Yrs		Total	
		M	F	M	F	M	F	M	F	M	F	M	F		
Pregnancy, Childbirth and Puerperium															
O00*	Abortions	0	0	0	0	0	0	1	0	118	0	0	0	0	119
O13*	Pregnancy Induced Hypertension	0	0	0	0	0	0	0	0	18	0	0	0	0	18
O20*	Ante-Partum Haemorrhage & Placenta Previa	0	0	0	0	0	0	0	0	13	0	0	0	0	13
O32	Malpresentation	0	0	0	0	0	0	0	0	3	0	0	0	0	3
O63	Prolonged Labour	0	0	0	0	0	0	0	0	25	0	0	0	0	25
O64*	Obstructed Labour	0	0	0	0	0	0	0	0	9	0	0	0	0	9
O72	Post Partum Haemorrhage	0	0	0	0	0	0	0	0	19	0	0	0	0	19
O73	Retained Placenta	0	0	0	0	0	0	0	0	19	0	0	0	0	19
O85*	Puerperal Sepsis	0	0	0	0	0	0	0	0	5	0	0	0	0	5
OZZ*	Other complications of pregnancy	0	0	0	0	0	0	2	0	288	0	0	0	0	290
Perinatal Conditions															
P05*	Low Birth Weight	6	6	0	0	0	0	0	0	0	0	0	0	0	12
P95	Foetal Death & Stillbirth	0	1	0	0	0	0	0	0	0	0	0	0	0	1
P96	Neonatal Death	2	1	0	0	0	0	0	0	0	0	0	0	0	3
PZZ*	Conditions Originating in the Perinatal Period	6	2	0	0	0	0	0	0	0	0	0	0	0	8
Malformations															
QZZ*	Malformations	1	0	0	2	0	1	0	0	2	1	0	0	0	7
Injuries & Trauma															
T65	Mushroom Poisoning (Toxic effect of other unspecified substances)	0	0	6	6	9	7	26	20	4	3	3	2	86	
V01*	Transport Accidents	0	1	12	5	30	14	236	78	34	12	14	3	439	

Contd/.....Table 3.5 Morbidity Cases Seen by Basic Health Units - 2015

Code#	Name of Diseases	Under 1 Yr		1 - 4 Yrs		5 - 14 Yrs		15 - 49 Yrs		50 - 64 Years		65 + Yrs		Total
		M	F	M	F	M	F	M	F	M	F	M	F	
W00*	Accidental Falls	4	6	130	99	681	336	790	443	179	128	102	80	2978
W50*	Other Bites & Stings	13	9	120	115	315	218	487	490	110	124	52	37	2090
W54	Dog Bite	1	3	133	73	530	333	588	511	171	127	83	53	2606
W65*	Drowning & Submersion	0	0	1	2	12	6	8	3	6	2	1	2	43
W86*	Exposure to Electric Current	0	0	2	2	6	2	13	6	2	1	1	0	35
X00*	Contact with Heat & Hot substances & exposure to smoke, fire, flames	31	19	165	152	215	181	309	283	67	50	24	23	1519
X20	Snake Bite	0	0	2	0	5	2	24	19	8	5	3	2	70
X21*	Contact with Venomous animals (excluding Snake bite)	0	1	9	4	15	9	16	12	10	2	2	3	83
X60*	Intentional Self Harm	0	2	2	1	43	30	148	99	30	18	9	5	387
Y96	Work Related Injuries	10	8	164	139	2244	1132	7209	3124	1427	699	570	240	16966
YYY*	Others (injuries other than above & unknown cause of injury)	22	26	348	263	2053	961	2697	1696	521	321	239	130	9277
Other Conditions														
YZZ*	Complications of Health Care	18	24	44	48	31	55	158	291	49	29	11	14	772
ZZZ*	ANC, Immunization & Other counseling	2268	2658	3490	3506	1922	2083	2975	16310	931	983	557	524	38207
	Total	9654	10094	24788	25363	65878	66991	120581	174120	33071	37199	20533	20451	608723
Old Cases all causes														
ZZZZ	Total Old Cases all causes	188140												

Table 3.6 Case Load by Health Facilities - 2015

Sl.#	Facility Name	Case type		Total
		New	Old	
Bumthang				
1	Bumthang Hospital	20827	5451	26278
2	Chokor BHU	2074	0	2074
3	Chumey BHU	7435	0	7435
4	Dhur	1131	13	1144
5	Tang BHU	4787	125	4912
6	Ura BHU	3411	167	3578
Chhukha				
7	Arikha BHU	539	85	624
8	Baikunza Sub-Post	2741	1333	4074
9	Bongo BHU	1903	405	2308
10	Chapchha BHU	2503	6187	8690
11	Chhukha BHU I	12774	2210	14984
12	Chong Geykha BHU	7977	3035	11012
13	Darla BHU	2521	798	3319
14	Doongna BHU	20701	7255	27956
15	Gedu Hospital	3604	116	3720
16	Getana BHU	1809	1506	3315
17	Loggchina BHU	2085	989	3074
18	Metakha BHU	1961	250	2211
19	Phuentsholing Hospital	60434	2168	62602
20	Rangaytung BHU	2076	423	2499
21	Sinchula BHU	2709	884	3593
22	Tashigatshel RBP MI Room	2142	491	2633
23	Tsimalakha Hospital	15898	8264	24162
Dagana				
24	Akhochen BHU	1598	1479	3077
25	Dagana BHU I	9246	2665	11911
26	Dagapela Hospital	10815	13710	24525
27	Drukjeygang BHU	4630	1254	5884
28	Jurugang BHU	1699	239	1938
29	Khagochen BHU	2611	403	3014
30	Lagyab BHU	1988	143	2131
31	Lhamoizingkha BHU I	10140	7861	18001
32	Nyimtola BHU	2118	382	2500
33	Tsangkha BHU	3468	810	4278

Contd./...Table 3.6 Case Load by Health Facilities - 2015

Sl.#	Facility Name	Case Type		Total
		New	Old	
Gasa				
34	Damji BHU	2626	649	3275
35	Gasa BHU I	2691	558	3249
36	Laya BHU	1205	391	1596
37	Lunana BHU	96	11	107
Haa				
38	Bali BHU I	14456	5199	19655
39	Dorithasa BHU	457	1282	1739
40	Haa IMTRAT Hospital	10194	6079	16273
41	Sangbay BHU	1786	1965	3751
42	Yangthang BHU	884	930	1814
Lhuentse				
43	Autsho BHU	4828	1323	6151
44	Dangling BHU	991	225	1216
45	Dungkar BHU	2021	723	2744
46	Ganglakhema BHU	749	311	1060
47	Gortshom BHU	966	1241	2207
48	Khoma BHU	3404	511	3915
49	Ladrong BHU	1189	320	1509
50	Lhuentse Hospital	4070	8425	12495
51	Minjey BHU	3354	543	3897
52	Ney BHU	1302	245	1547
53	Patpachhu BHU	2429	816	3245
54	Tagmachhu BHU	4394	1448	5842
55	Thimyul BHU	1499	569	2068
56	Tsaenkhar BHU	1869	972	2841
57	Zangkhar BHU	707	279	986
Monggar				
58	Baanjar BHU	459	89	548
59	Balam BHU	2548	314	2862
60	Boompazor BHU	1161	266	1427
61	Chagsakhar BHU	3642	1243	4885
62	Chhaling BHU	3408	794	4202
63	Daagsa BHU	2179	332	2511
64	Dramedtse BHU	6444	699	7143
65	Ganglapong BHU	653	300	953
66	Gyalpoizhing BHU I	9939	6774	16713
67	Jurmed BHU	2914	610	3524
68	Kengkhar BHU	2523	217	2740
69	Lingmethang BHU	6782	1534	8316
70	Monggar ERR Hospital	16077	52917	68994

Contd/...Table 3.6 Case Load by Health Facilities - 2015

Sl.#	Facility Name	Case Type		Total
		New	Old	
71	Muhoong Sub-Post	960	493	1453
72	Nagor BHU	1664	552	2216
73	Narang BHU	1783	455	2238
74	Ngatshang BHU	1471	645	2116
75	Pangthang Sub-Post	735	66	801
76	Resa Sub-Post	210	52	262
77	Senggor BHU	721	113	834
78	Serzhong BHU	2455	389	2844
79	Silambi Sub-Post	672	374	1046
80	Tagkhambi Sub-Post	867	410	1277
81	Thangrong BHU	2871	592	3463
82	Tongla Sub-Post	1034	212	1246
83	Tsakaling BHU	2960	1411	4371
84	Tsamang BHU	1212	300	1512
85	Yadi BHU	3890	1388	5278
86	Yangbari BHU	2543	676	3219
Paro				
87	Bueltikha BHU	7207	2174	9381
88	Dawakha BHU	4076	2108	6184
89	Drugyal BHU	6556	3493	10049
90	Paro Hospital	77784	22894	100678
Pema Gatshel				
91	Borangma Sub-Post	504	20	524
92	Chhimoong BHU	1214	297	1511
93	Chhoekhorling BHU	1159	1147	2306
94	Chongshing Sub-Post	778	270	1048
95	Dechhenling BHU	6604	1224	7828
96	Dungmaed BHU	1405	262	1667
97	Gonpa Singma BHU	3186	998	4184
98	Khangma Sub-Post	1664	252	1916
99	Mikuri Sub-Post	870	49	919
100	Nanong BHU	4348	1669	6017
101	Naskhar Sub-Post	311	81	392
102	Nganglam BHU I	7543	9703	17246
103	Norboogang BHU	2089	676	2765
104	Pemagatshel Hospital	13092	7343	20435
105	Pretengma BHU	1317	533	1850
106	Shali Sub-Post	1126	512	1638
107	Thongsa Sub-Post	1101	314	1415

Contd./...Table 3.6 Case Load by Health Facilities - 2015

Sl.#	Facility Name	Case Type		Total
		New	Old	
108	Thrumchung BHU	685	205	890
109	Tshatshi BHU	2075	911	2986
110	Yurung BHU	4361	2343	6704
Punakha				
111	Goenshari BHU	943	208	1151
112	Kabisa BHU	7078	1500	8578
113	Norbugang BHU	2235	809	3044
114	Punakha Hospital	13290	34068	47358
115	Samadingkha BHU	4693	1086	5779
116	Shelnga BHU	2838	1387	4225
117	Thinleygang BHU	6794	1086	7880
118	Tshochasa BHU	1196	715	1911
Samdrup Jongkhar				
119	Dewathang RBA Hospital	12519	10118	22637
120	Gomdar BHU I	5778	1283	7061
121	Jomotsangkha BHU I	5116	1963	7079
122	Lauri BHU	1369	289	1658
123	Maenjiwoong BHU	1985	534	2519
124	Martshala BHU	5369	518	5887
125	Orong BHU	6755	1746	8501
126	Pemathang BHU	4385	911	5296
127	Samdrup Jongkhar Hospital	23017	6395	29412
128	Samdrupchhoeling BHU I	11526	3917	15443
129	Wangphoog BHU	4455	2855	7310
130	Zangthi BHU	1189	245	1434
Samtse				
131	Bara BHU	4669	2267	6936
132	Chengmari BHU	5486	775	6261
133	Doongtoed BHU	3595	1023	4618
134	Dorokha BHU	9203	480	9683
135	Duenchukha BHU	4388	355	4743
136	Ganthog BHU	1940	101	2041
137	Gomtu Hospital	13162	7222	20384
138	Panbari BHU	6060	891	6951
139	Pemaling BHU	1368	230	1598
140	Samtse Hospital	28563	31536	60099
141	Sangngag Chhoeling BHU	2294	437	2731
142	Sengteng BHU	5956	1037	6993
143	Sibsoo Hospital	3981	10217	14198

Contd/...Table 3.6 Case Load by Health Facilities - 2015

Sl.#	Facility Name	Case Type		Total
		New	Old	
144	Tendruk BHU	10986	1770	12756
145	Ugyentse BHU	2848	425	3273
146	Yoeseltse BHU	5212	1220	6432
Sarpang				
147	Chhuzaggang BHU	13077	2701	15778
148	Chokhorling BHU	9611	6220	15831
149	Gelegphu CRR Hospital	128762	52703	181465
150	Gongdara BHU	2354	566	2920
151	Jangchubling BHU	4407	540	4947
152	Jigme Chhoeling BHU	4439	4182	8621
153	Jigmedling BHU	3420	1850	5270
154	Lhayul BHU	2351	616	2967
155	Norbuling BHU	9633	3656	13289
156	Phibsoo BHU	244	61	305
157	Sarpang Hospital	11966	11825	23791
158	Sarpangsheer BHU	659	319	978
159	Seng Gey BHU	3480	1052	4532
160	Taraythang BHU	1093	184	1277
161	Umling BHU	5549	2424	7973
Thimphu				
162	Barshong BHU	460	166	626
163	Chamgang BHU	2199	833	3032
164	Chamgang RBP BHU	836	1984	2820
165	Changjiiji Satellite Clinic	9694	5192	14886
166	CHU JDWNRH	1855	562	2417
167	Dechhencholing BHU I	13288	8524	21812
168	Genyenka BHU	1501	528	2029
169	Gidakom Hospital	12581	7855	20436
170	Hongtsho BHU	2382	1070	3452
171	IBF IMTRAT Hospital	39406	15049	54455
172	JDWNR Hospital	16546	481894	498440
173	Jungshina Satellite Clinic	12000	5768	17768
174	Kuzhugchen BHU	1664	477	2141
175	Lingzhi BHU	946	181	1127
176	Lungtenphu RBA Hospital	44051	38320	82371
177	Motithang Satellite Clinic	9423	7473	16896
178	RBP HQ Clinic	7576	1425	9001
179	Soe BHU	308	83	391

Contd/...Table 3.6 Case Load by Health Facilities - 2015

Sl.#	Facility Name	Case Type		Total
		New	Old	
Trashigang				
180	Bartsham BHU I	4688	1029	5717
181	Bidoong BHU	1539	742	2281
182	Bikhar BHU	4053	1365	5418
183	Chaling BHU	2105	325	2430
184	Chhangmi BHU	2299	426	2725
185	Joenkhar Sub-Post	819	337	1156
186	Kanglung BHU I	10340	10727	21067
187	Kangpar BHU	3037	1317	4354
188	Khaling BHU I	8280	3493	11773
189	Lumang BHU	1097	412	1509
190	Merag BHU	2362	648	3010
191	Passaphoog Sub-Post	777	276	1053
192	Phegpari Sub-Post	1137	310	1447
193	Phongmed BHU	4084	1024	5108
194	Radi BHU	3496	2138	5634
195	Rangjoong BHU I	7821	3185	11006
196	Riserboo Hospital	13745	4710	18455
197	Sagteng BHU	2992	348	3340
198	Thongrong Sub-Post	403	215	618
199	Thoongkhar BHU	1325	583	1908
200	Trashigang Hospital	21464	12624	34088
201	Tsangpo BHU	4043	735	4778
202	Udzorong BHU	3799	992	4791
203	Yabrang BHU	1656	502	2158
204	Yangnyer BHU	5395	748	6143
205	Yonphoogla IMTRAT Hospital	8072	1839	9911
Trashiyangtse				
206	Dungzam BHU	2669	669	3338
207	Jamkhar BHU	2335	598	2933
208	Jangphutse Sub-Post	734	232	966
209	Khamdang BHU I	7207	2434	9641
210	Khi Nyel BHU	2677	872	3549
211	Melongkhar BHU	993	64	1057
212	Rabtay Sub-Post	1167	1085	2252
213	Ramjar BHU	2236	640	2876
214	Thragom BHU	1428	873	2301
215	Tongmizhangsa BHU	2632	1085	3717
216	Yangtse Hospital	8320	6049	14369

Contd/...Table 3.6 Case Load by Health Facilities - 2015

Sl.#	Facility Name	Case Type		Total
		New	Old	
Trongsa				
217	Bemji BHU	2001	147	2148
218	Jangbi BHU	1402	190	1592
219	Kella Sub-Post	920	126	1046
220	Korphoog BHU	547	163	710
221	Kuengarabten BHU	6741	2828	9569
222	Nabji Sub-Post	817	431	1248
223	Nimshong Sub-Post	484	43	527
224	Tongtophel BHU	7503	1527	9030
225	Trashiling BHU	4363	1349	5712
226	Trongsa Hospital	12785	5853	18638
Tsirang				
227	Barshong BHU	2783	423	3206
228	Damphu Hospital	30477	12256	42733
229	Doonglagang BHU	3564	1259	4823
230	Mendrelgang BHU	6529	1708	8237
231	Pungtenchhu BHU	1160	232	1392
232	Semjong BHU	2706	664	3370
233	Sergithang BHU	5114	1032	6146
234	Tsirang Toed BHU	6240	1118	7358
Wangdue Phodrang				
235	Dangchhu BHU	2943	614	3557
236	Esa BHU I	10711	3026	13737
237	Gaselo BHU	5429	1941	7370
238	Jala Ula BHU	3269	346	3615
239	Kamichhu BHU	7909	542	8451
240	Khotokha Sub-Post	1498	513	2011
241	Lopokha Sub-Post	429	41	470
242	Saephoog BHU	5806	3048	8854
243	Samtengang BHU	6295	1777	8072
244	Teki Agona BHU	2078	568	2646
245	Uma BHU	1258	213	1471
246	Wangdue Hospital	34729	27600	62329
247	Wangdue RBA Hospital	7342	1372	8714

Contd/...Table 3.6 Case Load by Health Facilities - 2015

Sl.#	Facility Name	Case Type		Total
		New	Old	
Zhemgang				
248	Bjoka BHU	2234	1949	4183
249	Buli BHU	3499	696	4195
250	Gongphu BHU	1617	404	2021
251	Goshing BHU	2528	3074	5602
252	Kagtong BHU	834	752	1586
253	Khomshar BHU	1996	295	2291
254	Kradijong BHU	550	343	893
255	Langdorbi BHU	1143	272	1415
256	Manas BHU	205	76	281
257	Namregang BHU	647	782	1429
258	Panbang BHU I	2950	4604	7554
259	Pantang BHU	3875	3917	7792
260	Shingkar BHU	2378	356	2734
261	Tshaidang BHU	1966	316	2282
262	Yebilaptsa Hospital	7544	4420	11964
263	Zhemgang BHU I	8836	8491	17327
Total		1528217	1207061	2735278

Table 3.7 Notifiable Disease Report - 2015

Sl.#	Notifiable Disease	Cases
1	Anthrax	0
2	Avian Influenza	0
3	Brucellosis	0
4	Cholera	0
5	Rubella	0
6	Congenital Rubella Syndrome	0
7	Diphtheria	0
8	Dengue	2
9	Dengue Haemorrhage fever	0
10	Shigellosis	1
11	Human Rabies	0
12	Japanese Encephalitis	0
13	Leptospirosis	1
14	Measles	4
15	Bacterial Meningitis	8
16	Mumps	583
17	Nipha Virus	0
18	Pertusis	12
19	Plague	0
20	Poliomyelitis	0
21	SARS	0
22	Small Pox	0
23	Tetanus	0
24	Typhoid Fever	37
25	Viral Hepatitis	2
26	Serub Typhus	113
27	Others	76

Table 4: Health service coverage

Table 4.1 Selected health service coverage indicator

Sl. #	Indicators	Year				Source
		2000	2005	2010	2015	
1	Access to safe drinking water (%)	78	83	88	95	NHS,2000; HMIS, MoH
2	Access to safe excreta disposal (%)	90	91	93	96	HMIS, MoH
3	Antenatal care attendance/coverage at least once by skilled health personnel (Numbers)	13910	13818	13123	11994	HMIS, MoH
4	Births by caesarean section (Numbers)	444	1133	1795	2179	HMIS, MoH
5	Children aged 1-5 years who received vitamin A supplementation (%)	NA	NA	45	61519	HMIS, MoH
6	Contraceptive prevalence rate (%)	30.7	57	65.6	65.6	NHS,2000; PHCB, 2005; BMIS, 2010
7	Deliveries attended by skilled health personnel (%)	23.7	49.1	69.5	89*	NHS, 2000; PHCB, 2005; BMIS, 2010; MoH
8	Institutional deliveries (%)	19.8	40.0	63.1	81*	NHS,2000; HMIS, MoH; BMIS, 2010; MoH
9	Immunization coverage (%)	92	95	91	94.4	MoH; EPI Survey 2008
10	Number and distribution of inpatient (IPD) beds (per 10,000 population)	1166	1166	1277	1277	HMIS, MoH
11	Number and distribution of health facilities providing traditional medicine services (per 10,000 population)	36	37	38	53	HMIS, MoH
12	Number of health facilities providing VCT/PICT services	30	30	30	48	NACP (DoPH), MoH
13	Number of health facilities providing comprehensive PMTCT package	3	6	6	7	NACP (DoPH), MoH
14	Smear-positive Tuberculosis treatment-success rate (%)	91	93.3	90.1	88	NTCP (DoPH), MoH
15	Tuberculosis (all forms of TB) notification rate (per 100,000 population)	145	168	191	129	NTCP (DoPH), MoH
16	Unmet need for family planning (%)	NA	NA	11.7	11.7	BMIS, 2010

* Total deliveries attended by trained health personnel (facility + home) $\times 100$

Total ANC (1st Visit)

Table 4.2 Antenatal Care (Clinic Attendance) - 2015

Sl.#	District	ANC attendances				
		1st visit	2nd visit	3rd visit	4 th visit	5+ visit
1	Bumthang	349	327	296	299	806
2	Chhukha	1157	1218	1268	1252	4741
3	Dagana	362	299	302	234	476
4	Gasa	63	48	40	36	60
5	Haa	222	254	202	198	368
6	Lhuentse	240	221	198	196	434
7	Monggar	722	659	620	572	1291
8	Paro	737	709	704	665	1832
9	Pemagatshel	390	377	320	336	886
10	Punakha	511	413	431	412	1021
11	Samdrup Jongkhar	539	517	513	469	1087
12	Samtse	917	870	846	800	1917
13	Sarpang	601	639	643	660	2039
14	Thimphu	2493	2357	2454	2358	6569
15	Trashigang	271	254	258	247	615
16	Trashiyangtse	734	670	657	596	1168
17	Trongsa	377	245	246	208	493
18	Tsirang	307	350	320	321	890
19	Wangdue Phodrang	701	693	725	640	1318
20	Zhemgang	301	284	263	219	448
Total		11994	11404	11306	10718	28459

Table 4.3 Deliveries Attended by Trained Health Personnel and Post-Natal Care - 2015

Sl.#	District	Deliveries Attended by trained personnel			Assisted (Forceps/ Vacuum) Deliveries	Total Deliveries as per household survey 2015	Post-Natal care (Clinic attendance)	
		Home	Facility	Total			1 st visit	2+ visit
1	Bumthang	13	143	156	1	325	156	281
2	Chhukha	31	1151	1182	8	694	915	1616
3	Dagana	14	108	122	0	391	116	251
4	Gasa	9	3	12	0	81	9	59
5	Haa	3	85	88	0	175	128	253
6	Lhuentse	17	120	137	0	279	133	233
7	Monggar	175	922	1097	18	854	555	747
8	Paro	0	478	478	0	654	459	672
9	Pemagatshel	28	220	248	0	453	221	499
10	Punakha	5	443	448	20	372	254	483
11	Samdrup Jongkhar	22	472	494	8	712	498	609
12	Samtse	22	525	547	87	970	431	1224
13	Sarpang	7	964	971	0	520	435	689
14	Thimphu	5	3918	3923	34	234	2923	3925
15	Trashigang	10	149	159	15	286	198	278
16	Trashiyangtse	96	505	601	0	965	450	572
17	Trongsa	18	93	111	0	269	104	164
18	Tsirang	6	182	188	0	307	134	508
19	Wangdue Phodrang	16	300	316	0	839	370	742
20	Zhemgang	31	121	152	0	358	137	223
Total		528	10902	11430	191	9738	8626	14028

+ Thimphu and Phuentsholing urban areas are not covered by the Annual Household Survey.

Table 4.4 Nutritional & Vitamin A status of Children Attending Clinics - 2015

Sl.#	District	Child attendances				Total	Weight			Vit A Supplementation		
		Infants < 1 year		1 to <5 years			Over	Normal	Under	<1 Yr	1to <5	PP Mother
		New	Old	New	Old							
1	Bumthang	219	3101	82	4455	7857	115	7573	156	453	1698	160
2	Chhukha	1260	10554	52	17194	29060	364	26869	816	2712	6106	1113
3	Dagana	218	3518	100	5105	8941	62	8377	360	526	1796	145
4	Gasa	36	508	3	501	1048	3	1051	8	81	213	9
5	Haa	660	1949	1138	2713	6460	29	3733	33	241	739	108
6	Lhuentse	166	2325	19	3292	5802	119	5662	123	306	1239	204
7	Monggar	1109	7636	76	11094	19915	167	19002	522	993	3910	1052
8	Paro	537	8878	0	7368	16783	301	15830	549	713	4139	522
9	Pemagatshel	334	4157	283	6255	11029	123	10503	503	711	2377	346
10	Punakha	546	4003	3	4626	9178	204	8978	141	568	2049	524
11	Samdrup Jongkhar	546	5293	54	8089	13982	92	13483	577	713	3278	497
12	Samtse	687	8511	0	14137	23335	213	22417	705	1174	5792	640
13	Sarpang	793	7422	9	8876	17100	118	16332	385	780	3266	698
14	Thimphu	4403	22998	441	23591	51433	535	49486	1330	2704	11642	4070
15	Trashigang	237	2939	12	4221	7409	47	7103	229	374	1754	317
16	Trashiyangtse	673	8037	22	9825	18557	215	17723	619	1013	3779	418
17	Trongsa	180	2636	32	3595	6443	48	6309	91	309	1188	120
18	Tsirang	221	3690	2	5840	9753	116	9383	253	465	2401	215
19	Wangdue Phodrang	323	7180	0	8428	15931	155	14927	192	979	2720	358
20	Zhemgang	232	3021	69	4226	7548	57	7228	240	377	1433	218
Total		13380	118356	2397	153431	287564	3083	271969	7832	16192	61519	11734

Table 4.5 Immunization Status by Districts - 2015

Sl.#	District	Antigen				
		BCG	Measles	OPV3	DPT-Hep B3	OPV 0
1	Bumthang	167	309	333	330	163
2	Chhukha	1171	1181	1119	1115	1151
3	Dagana	170	387	390	390	166
4	Gasa	14	59	52	52	15
5	Haa	124	200	196	192	121
6	Lhuentse	133	282	257	257	115
7	Monggar	1061	776	743	745	1007
8	Paro	526	781	713	712	518
9	Pemagatshel	289	437	462	461	289
10	Punakha	538	428	448	448	534
11	Samdrup Jongkhar	522	635	628	631	472
12	Samtse	687	989	963	963	629
13	Sarpang	784	645	647	647	764
14	Thimphu	4269	2691	2309	2309	4160
15	Trashigang	230	308	324	325	217
16	Trashiyangtse	621	959	877	877	645
17	Trongsa	145	287	331	289	118
18	Tsirang	213	371	365	364	208
19	Wangdue Phodrang	324	737	759	759	302
20	Zhemgang	189	354	366	361	215
Total		12177	12816	12282	12227	11809

Table 4.6 Family Planning Methods by Districts - 2015

Sl.#	District	New IUD Inserted	Oral pills (No. of Cycles issued)	DMPA (No. Injected)	Vasectomy*	Tubectomy*	No. of Condom issued (In pieces)
1	Bumthang	23	1995	2387	86	114	87201
2	Chhukha	127	9597	8032	625	406	84754
3	Dagana	66	6447	3351	508	212	24089
4	Gasa	3	310	577	21	24	9097
5	Haa	10	1280	1428	174	187	33626
6	Lhuentse	30	1974	1687	215	105	37790
7	Monggar	178	3305	6723	437	414	148374
8	Paro	39	2100	4853	672	834	81630
9	Pemagatshel	4	1641	2823	320	95	50395
10	Punakha	49	3512	3729	278	376	61091
11	Samdrup Jongkhar	12	4701	4357	310	224	54438
12	Samtse	28	11574	7367	1956	546	72938
13	Sarpang	63	5717	6370	413	349	74867
14	Thimphu	624	6845	9788	133	210	133414
15	Trashigang	45	1428	2217	133	124	33323
16	Trashiyangtse	79	4677	6629	473	237	122330
17	Trongsa	20	1968	2305	155	95	36027
18	Tsirang	8	3482	4092	324	179	34707
19	Wangdue Phodrang	34	2385	4518	764	554	68395
20	Zhemgang	64	1861	3089	125	96	27081
Total		1506	76799	86322	8122	5381	1275567

Note:

*Cumulative figures, collected from Annual Household Survey.

Oral pills = 1 user is equal to 13 cycles or 12 cycles

DMPA = 1 user is equal to 4 injections

Table 4.7 Hospital Admission & Average Length of Stay - 2015

Sl.#	District	Hospital Admissions			Average length of stay	BHU Admission
		Total admission	Patient days			
1	Bumthang	681	2060		3.0	42
2	Chhukha	4405	17784		4.0	615
3	Dagana	902	2402		2.7	562
4	Gasa	33	62		1.9	15
5	Haa	592	972		1.6	311
6	Lhuentse	777	2545		3.3	328
7	Monggar	4975	45378		9.1	2124
8	Paro	2775	8166		2.9	59
9	Pemagatshel	1395	2626.8		1.9	690
10	Punakha	2500	5596		2.2	250
11	Samdrup Jongkhar	2659	9597		3.6	1262
12	Samtse	3163	22070		7.0	708
13	Sarpang	4155	14620		3.5	471
14	Thimphu	19016	121559		6.4	109
15	Trashigang	712	3120		4.4	519
16	Trashiyangtse	4415	16871		3.8	401
17	Trongsa	669	2629		3.9	159
18	Tsirang	1674	7421		4.4	293
19	Wangdue Phodrang	2882	9784		3.4	209
20	Zhemgang	707	3944		5.6	1038
Total		59087	299207		5.1	10165

Table 4.8 Laboratory Tests by Districts - 2015

Sl.#	District	Haemoglobin Levels	Blood grouping	Malaria slides	TB Sputum	Urine	Stool	HIV	*Others	Total
		a	b	c	d	e	f	g	h	i
1	Bumthang	4080	923	38	200	2696	154	773	7187	16051
2	Chhukha	19934	6841	1747	4616	26684	426	3854	794577	858679
3	Dagana	2922	515	1094	168	4098	68	555	9989	19409
4	Gasa	220	59	0	23	151	3	46	0	502
5	Haa	3795	1073	336	202	9521	421	639	20062	36049
6	Lhuentse	2292	434	7	133	1654	44	452	25378	30394
7	Monggar	11651	4406	311	408	7484	337	2602	210	27409
8	Paro	4857	1903	346	985	11637	330	1789	73109	94956
9	Pemagatshel	3161	1066	621	369	3287	136	1352	16839	26831
10	Punakha	6367	1543	43	142	4571	53	1120	181	14020
11	Samdrup Jongkhar	11348	1872	4440	744	5313	121	2951	82067	108856
12	Samtse	13457	4132	2967	719	14095	751	1829	254059	292009
13	Sarpang	16865	4600	9386	1357	14168	618	3924	171381	222299
14	Thimphu	101245	92688	2051	12033	136869	5576	24449	1735522	2110433
15	Trashigang	2760	806	35	204	3037	75	524	24193	31634
16	Trashiyangtse	10488	3468	182	849	21273	362	1805	63487	101914
17	Trongsa	1389	681	160	597	1906	126	1887	9933	16679
18	Tsirang	5048	1368	148	192	3445	313	1182	14117	25813
19	Wangdue Phodrang	8126	875	424	434	6222	188	2553	0	18822
20	Zhemgang	3312	1161	805	120	3439	50	690	22769	32346
Total		233317	130414	25141	24495	281550	10152	54976	3325060	4085105

* Calculation: = i-(a+b+c+d+e+f+g)

Table 4.9 Surgeries by Districts - 2015

Sl.#	District	Caesarean section	General		Orthopaedic		Gynae-cology	ENT	Eye
			Abdominal	Others	Extremities	Others			
1	Bumthang	0	0	0	0	0	0	0	2
2	Chhukha	277	82	2202	0	0	228	0	73
3	Dagana	1	1	0	0	0	1	0	0
4	Gasa	0	0	0	0	0	0	0	0
5	Haa	7	8	459	17	1	15	0	0
6	Lhuentse	0	0	0	0	0	0	0	11
7	Monggar	328	89	288	315	33	228	143	72
8	Paro	41	40	19	0	0	84	0	0
9	Pemagatshel	0	0	0	0	0	0	5	0
10	Punakha	144	20	11	0	2	178	0	34
11	Samdrup Jongkhar	108	150	3684	220	142	0	1370	270
12	Samtse	9	0	9	0	0	30	0	40
13	Sarpang	183	387	15	5	6	274	39	133
14	Thimphu	1035	2129	1972	1574	103	1420	974	2741
15	Trashigang	0	0	0	0	0	0	0	0
16	Trashiyangtse	41	23	0	0	0	44	0	36
17	Trongsa	0	0	0	0	0	0	0	0
18	Tsirang	0	0	0	0	0	0	0	0
19	Wangdue Phodrang	5	6	1224	327	110	91	20	15
20	Zhemgang	0	0	0	0	0	0	0	0
Total		2179	2935	9883	2458	397	2593	2551	3427

Table 4.10 Selected Diagnostic Services by Districts - 2015

Sl.#	District	X-ray			Ultrasound		
		Chest	Extremities	Others	Gyn/Obs	Abdomen	Others
1	Bumthang	610	482	150	1201	843	4
2	Chhukha	2983	2019	992	4242	3171	385
3	Dagana	216	281	37	0	90	0
4	Gasa	0	0	0	0	0	0
5	Haa	8057	555	548	450	176	113
6	Lhuentse	184	160	122	301	219	3
7	Monggar	2822	1435	584	3182	3711	692
8	Pato	1451	1428	693	3453	2654	1429
9	Pemagatshel	425	336	137	417	482	54
10	Punakha	917	622	310	2214	1676	215
11	Samdrup Jongkhar	1022	522	314	1687	1674	81
12	Samtse	871	936	383	1629	1157	340
13	Sarpang	3430	1789	1315	3539	3427	529
14	Thimphu	14702	11590	6189	6900	14553	3790
15	Trashigang	310	207	161	28	0	21
16	Trashiyangtse	2031	849	611	2722	2561	119
17	Trongsa	479	293	109	768	517	16
18	Tsirang	676	613	141	1636	1692	262
19	Wangdue Phodrang	825	822	606	3232	3616	645
20	Zhemgang	66	58	25	0	0	0
Total		42077	24997	13427	37601	42219	8698

Table 4.11 Dental Services by Districts - 2015

Sl.#	District	Dental Services				
		Prophylaxis	Scaling	Fillings	Extractions	Others
1	Bumthang	17	84	1061	1773	1924
2	Chhukha	182	26	3864	4454	7689
3	Dagana	102	59	883	776	860
4	Gasa	8	2	36	99	50
5	Haa	38	9	724	692	971
6	Lhuentse	24	16	364	613	770
7	Monggar	292	41	4597	3447	6458
8	Paro	144	26	3146	2890	6142
9	Pemagatshel	73	7	1274	962	1446
10	Punakha	137	64	780	1450	2396
11	Samdrup Jongkhar	655	51	919	1493	1527
12	Samtse	39	21	502	1542	2440
13	Sarpang	215	54	2923	3857	7389
14	Thimphu	1777	974	18486	45890	2577
15	Trashigang	110	261	928	494	1298
16	Trashiyangtse	274	59	3000	2657	4096
17	Trongsa	155	25	734	737	834
18	Tsirang	126	0	1023	1857	2476
19	Wangdue Phodrang	1898	0	2417	2863	2001
20	Zhemgang	334	38	231	616	214
Total		6600	1817	47892	79162	53558

Table 4.12 Facility Wise Selected Services – 2015

Sl.#	Facility Name	Trained Delivery		Vaccination Services				Family Planning					*No. of households with Water & Sanitation		
		Home	Facility	BCG	OPV3	DPT- HepB - Hib 3	Measles	Oral Pills (cycles)	DMPA (Infected)	Current IUD User	Tubectomy	Vasectomy	Latrine	Pipe water supply	Pipe water not functioning
Bumthang															
1	Bumthang Hospital	0	120	91	168	168	163	913	942	44	64	52	1236	1236	0
2	Chokor BHU	1	3	13	23	20	23	161	171	0	9	3	242	231	0
3	Chumey BHU	4	7	24	53	53	49	415	590	10	25	9	548	543	0
4	Dhur	7	1	10	18	18	10	125	82	0	1	1	117	110	0
5	Tang BHU	1	6	17	43	43	39	138	348	1	9	12	353	354	0
6	Ura BHU	0	6	12	28	28	25	243	254	1	6	9	316	314	0
*Chhukha															
7	Baikunza Sub-Post	0	0	0	1	1	3	13	31	0	0	2	62	53	11
8	Bongo BHU	2	0	3	9	9	17	92	170	2	3	10	212	166	18
9	Chapchha BHU	0	6	6	20	16	19	235	267	8	12	30	371	346	0
10	Chhukha BHU I	0	21	27	42	42	54	485	408	41	62	74	1036	1035	1
11	Chong Geykha BHU	0	10	14	40	40	36	834	540	1	26	41	381	284	94
12	Darla BHU	2	22	69	99	99	112	856	758	18	103	72	1564	1561	1
13	Doongna BHU	3	0	7	20	20	15	259	114	6	2	23	131	123	0
14	Gedu Hospital	0	70	51	72	72	64	674	561	20	59	31	1260	1146	30
15	Getana BHU	6	7	13	24	24	19	71	174	0	0	28	124	123	1
16	Loggchina BHU	0	6	6	11	11	13	292	70	0	10	9	135	132	7
17	Metaakha BHU	2	4	8	21	21	20	645	385	1	17	50	369	369	37
18	Phuentsholing Hospital	1	0	8	9	9	10	124	114	2	5	7	110	102	15

* Data from Catchment Areas

Contd/..... Table 4.12 Facility Wise Selected Services – 2015

Sl.#	Facility Name	Trained Delivery		Vaccination Services						Family Planning				*No. of households with Water & Sanitation		
		Home	Facility	BCG	OPV3	DPT- HepB - Hib 3	Measles	Oral Pills (cycles)	DMPA (Injected)	Current IUD	Tubeectomy	Vaseectomy	Latrine	Water supply	Pipe water not functioning	
19	Rangaytung BHU	0	2	7	23	23	19	340	209	1	21	57	489	489	0	
20	Sinchula BHU	2	10	22	44	44	42	605	325	2	14	44	356	389	0	
21	TashigatsheI RBP MI Room	0	0	0	0	0	0	115	196	15	5	8	120	120	0	
22	Tsimalakra Hospital	0	60	58	89	89	88	615	544	25	67	54	764	763	0	
Dagana																
23	Akkochen BHU	0	1	10	32	32	28	655	120	1	3	2	255	255	0	
24	Dagana BHU I	2	14	19	59	59	56	713	196	7	29	86	604	495	20	
25	Dagapela Hospital	6	48	57	112	112	102	2354	732	23	77	154	1433	1424	12	
26	Drukjeygang BHU	4	8	18	25	25	27	396	480	3	14	39	546	502	20	
27	Jurugang BHU	0	2	5	12	12	8	265	137	0	2	36	155	147	0	
28	Khagochen BHU	0	8	13	46	46	45	827	277	1	17	21	417	397	0	
39	Lagyab BHU	0	1	6	24	24	35	189	267	0	8	40	178	175	3	
30	Lhamoizingkha BHU I	1	16	31	44	44	42	624	620	5	50	117	1034	991	504	
31	Nyimtola BHU	0	1	3	8	8	13	131	182	0	8	1	170	161	0	
32	Tsangkha BHU	1	9	8	28	28	31	293	340	2	4	12	265	350	5	
Gasa																
33	Damji BHU	0	0	1	14	14	18	20	101	8	8	0	186	186	0	
34	Gasa BHU	3	3	4	25	25	23	168	138	0	0	2	230	232	144	
35	Laya BHU	2	0	6	13	13	18	14	208	8	16	19	233	222	0	
36	Lungmana BHU	4	0	3	0	0	0	108	130	0	0	0	164	160	4	

Contd/..... Table 4.12 Facility Wise Selected Services - 2015

Sl.#	Facility Name	Trained Delivery		Vaccination Services					Family Planning					*No. of households with Water & Sanitation		
		Home	Facility	BCG	OPV3	DPT- HepB - Hib 3	Measles	Oral Pills (cycles)	DMPA (Injected)	Current IUD User	Tubectomy	Vasectomy	Latrine	Water supply	Pipe water not functioning	
Haa																
37	Bali BHU I	1	83	101	130	130	129	685	624	26	115	113	1459	1457	0	
38	Dorithasa BHU	2	0	5	9	9	14	183	184		4	13	195	173	8	
39	Haa IMTRAT Hospital	0	0	5	1	0	2	0	0	0	0	0	0	0	0	
40	Sangbay BHU	0	2	2	14	14	17	189	262	4	7	7	200	171	13	
41	Yangthang BHU	0	0	11	42	39	38	223	358	24	61	41	705	697	0	
Lhuentse																
42	Autsho BHU	1	7	2	17	17	18	86	139	3	7	10	236	236	0	
43	Dangling BHU	0	0	6	7	7	5	13	27	3	1	6	129	128	1	
44	Dungkar BHU	2	4	11	23	23	19	82	86	4	5	29	187	187	0	
45	Ganglakhema BHU	0	0	1	2	2	5	88	63	9	1	10	92	92	0	
46	Gortshom BHU	1	1	13	27	27	32	85	124	2	8	6	206	202	4	
47	Khoma BHU	1	11	8	19	19	15	146	174	25	16	11	255	255	0	
48	Ladrong BHU	2	12	14	22	22	23	53	73	0	0	13	171	171	0	
49	Lhuentse Hospital	2	68	26	32	32	32	369	204	16	22	14	348	348	0	
50	Minjey BHU	1	4	10	10	10	16	325	138	10	7	14	228	228	0	
51	Ney BHU	2	0	3	8	8	12	54	32	3	1	6	105	104	0	
52	Patpachhu BHU	1	1	7	16	16	23	262	125	14	5	36	267	267	0	
53	Tagmachhu BHU	1	4	7	25	25	33	164	93	6	24	2	311	311	0	
54	Thimiyul BHU	1	6	22	33	33	32	112	211	2	2	7	287	287	0	
55	Tsaenkhar BHU	0	0	0	6	6	6	103	139	5	6	45	164	164	0	
56	Zangkhar BHU	2	2	3	10	10	11	32	59	2	0	6	88	88	0	

Contd/..... Table 4.12 Facility Wise Selected Services - 2015

Sl.#	Facility Name	Trained Delivery		Vaccination Services				Family Planning				*No. of households with Water & Sanitation			
		Home	Facility	BCG	OPV3	DPT- HepB - Hib 3	Measles	Oral Pills (cycles)	DMPA (Injected)	Current IUD User	Tubectomy	Vasectomy	Latrine	water supply	Pipe water not functioning
Monggar															
57	Baanjar BHU	1	3	4	4	4	5	57	22	0	2	6	52	52	0
58	Balam BHU	0	6	8	28	28	30	40	361	15	4	48	240	235	0
59	Boompazor BHU	1	5	5	19	19	15	51	214	27	15	14	256	256	0
60	Chagsakhar BHU	0	17	31	62	63	60	152	434	101	16	50	502	501	20
61	Chhaling BHU	1	4	8	24	25	28	60	309	27	11	11	311	311	0
62	Daagsa BHU	2	6	8	15	15	15	85	72	3	2	0	97	89	4
63	Dramedtse BHU	0	15	33	58	58	55	115	459	42	17	18	486	430	0
64	Ganglapong BHU	1	2	3	2	2	2	0	8	0	0	12	67	67	0
65	Gyalpoizhing BHU I	0	30	29	39	39	47	96	245	22	75	13	535	535	0
66	Jurmed BHU	1	10	25	42	42	53	95	280	2	4	8	287	187	43
67	Kengkhar BHU	0	6	13	22	22	39	165	395	1	10	2	301	301	0
68	Lingmethang BHU	0	13	24	52	52	38	175	427	28	13	21	527	527	0
69	Monggar ERR Hospital	140	713	742	154	154	143	642	1053	136	148	47	1694	1691	3
70	Muhoong Sub-Post	3	2	5	10	10	13	46	102	1	1	19	111	112	0
71	Nagor BHU	9	11	21	13	13	8	85	163	2	4	1	181	181	0
72	Narang BHU	4	23	28	31	31	35	48	196	1	8	22	238	236	2
73	Ngatshang BHU	0	10	3	16	16	18	33	209	23	6	9	174	185	0
74	Pangthang Sub-Post	1	1	3	2	2	7	76	40	2	2	5	116	117	0
75	Senggor BHU	0	0	0	0	0	0	0	11	0	0	0	0	0	0

Contd/... Table 4.12 Facility Wise Selected Services - 2015

Sl.#	Facility Name	Trained Delivery		Vaccination Services						Family Planning						*No. of households with Water & Sanitation		
		Home	Facility	BCG	OPV3	DPT- HepB - Hib 3	Measles	Oral Pills (cycles)	DMPA (Injected)	Current IUD	Tubectomy	Vasectomy	Latrine	water supply	Pipe water not functioning			
76	Serzhong BHU	5	15	24	41	41	33	80	240	1	11	23	236	223	0			
77	Silambi Sub-Post	2	0	5	5	5	13	33	194	0	2	0	128	115	13			
78	Tagkhambi Sub-Post	1	0	1	2	2	3	10	79	2	0	2	58	56	2			
79	Thangrong BHU	3	12	14	43	43	51	761	351	18	12	46	355	357	0			
80	Tongla Sub-Post	0	0	4	7	7	9	57	324	4	2	0	120	120	0			
81	Tsakaling BHU	0	4	6	16	16	14	73	134	29	11	8	293	293	0			
82	Tsamang BHU	0	2	4	10	10	5	43	49	19	13	41	119	115	3			
83	Yadi BHU	0	6	3	16	16	25	68	125	32	21	9	241	235	6			
84	Yangbari BHU	0	6	7	9	9	9	121	174	4	2	2	116	115	0			
Paro																		
85	Bueitkha BHU	0	3	4	54	54	67	191	378	8	47	73	638	628	10			
86	Dawakha BHU	0	7	7	28	28	27	92	227	17	59	38	502	402	9			
87	Drugyal BHU	0	3	11	74	73	81	420	691	44	92	23	993	1011	0			
88	Paro Hospital	0	465	504	557	557	606	1397	3557	263	636	538	6069	6002	338			
Pemagatshel																		
89	Borangma Sub-Post	0	2	3	1	1	0	38	7	0	1	4	53	53	0			
90	Chhimoong BHU	0	0	2	5	5	6	11	44	0	1	14	114	114	0			
91	Chhoekhorling BHU	2	1	3	2	2	3	69	39	1	3	13	153	153	0			
92	Chongshing Sub-Post	2	0	2	3	3	2	38	45	0	0	0	90	67	0			
93	Dechenling BHU	3	6	9	18	18	18	114	178	27	11	123	551	527	2			
94	Dungmaed BHU	0	3	4	9	10	9	44	49	1	0	4	129	126	0			

Contd/..... Table 4.12 Facility Wise Selected Services - 2015

Sl.#	Facility Name	Trained Delivery		Vaccination Services				Family Planning				*No. of households with Water & Sanitation			
		Home	Facility	BCG	OPV3	DPT- HepB - Hib 3	Measles	Oral Pills (cycles)	DMPA (Injected)	Current IUD	Tubectomy	Vasectomy	Latrine	water supply	Pipe water not functioning
95	Gonpa Singma BHU	0	1	9	17	17	18	120	95	0	2	2	256	217	44
96	Khangma Sub-Post	0	1	1	2	2	8	68	84	0	3	1	113	113	0
97	Mikuri Sub-Post	2	5	4	10	10	11	85	65	33	1	9	111	110	3
98	Nanong BHU	0	4	24	48	48	47	81	338	0	0	0	382	378	0
99	Naskhar Sub-Post	2	0	1	5	5	6	11	43	0	0	0	46	45	0
100	Nganglam BHU I	5	61	71	128	128	119	354	518	19	44	66	1273	1273	0
101	Norboogang BHU	0	4	8	11	9	13	104	169	0	3	31	188	184	41
102	Pemagatshel Hospital	0	96	106	129	129	107	228	554	1	10	31	1101	1047	53
103	Pretengma BHU	2	3	9	18	18	15	47	95	0	3	5	248	248	11
104	Shali Sub-Post	5	6	11	14	14	16	28	50	2	6	8	153	129	21
105	Thongsa Sub-Post	0	0	1	1	1	2	24	73	1	1	0	119	127	2
106	Thrumchung BHU	4	0	4	4	4	5	12	62	0	1	0	86	69	17
107	Tshatshi BHU	0	3	9	22	22	17	30	207	0	2	0	202	198	4
108	Yurung BHU	1	24	8	15	15	15	135	108	0	3	0	206	197	2
Punakha															
109	Goenshari BHU	0	0	2	6	6	7	103	88	2	9	9	126	121	0
110	Kabisa BHU	0	1	4	29	29	37	258	514	6	36	18	509	479	30
111	Norbugang BHU	0	0	0	14	14	9	46	70	5	26	23	290	289	0
112	Punakha Hospital	2	425	506	218	218	228	1988	1787	24	144	83	1436	1389	0
113	Samadingkha BHU	0	5	9	32	32	32	331	386	2	24	37	396	409	3
114	Shelnga BHU	0	3	3	12	12	11	108	77	5	15	10	222	217	7
115	Thinleygang BHU	3	2	6	127	127	92	625	730	18	101	70	1182	1158	21
116	Tshochasa BHU	0	7	8	10	10	12	53	77	0	21	28	205	205	0

Contd/..... Table 4.12 Facility Wise Selected Services - 2015

Sl.#	Facility Name	Trained Delivery		Vaccination Services						Family Planning					*No. of households with		
		Home	Facility	BCG	OPV3	DPT- HepB - Hib 3	Measles	Oral Pills (cycles)	DMPA (Injected)	Current IUD	User	Tubectomy	Vasectomy	Latrine	Water supply	Pipe water not functioning	
Samdrup Jongkhar																	
117	Dewathang RBA Hospital	0	267	149	77	77	71	911	556	9	65	52	788	788	0		
118	Gomdar BHU I	3	21	39	60	60	54	824	138	2	18	26	610	594	16		
119	Jomotsangkha BHU I	1	33	31	55	55	50	369	241	6	11	21	461	456	0		
120	Lauri BHU	0	8	12	16	16	20	59	311	1	0	0	301	293	9		
121	Maenjiwoong BHU	4	3	10	32	32	31	187	258	1	10	14	387	384	3		
122	Martshala BHU	5	18	27	44	44	50	94	417	0	6	36	456	434	0		
123	Orong BHU	3	5	20	30	30	37	53	309	1	17	30	617	617	0		
124	Pemathang BHU	0	17	27	26	29	26	621	185	1	2	18	443	443	0		
125	Samdrup Jongkhar Hospital	0	67	109	136	136	153	365	621	13	41	57	1372	1331	0		
126	Samdrupchoeling BHU I	1	20	56	76	76	72	998	571	1	38	25	861	861	7		
127	Wangphoog BHU	0	8	27	49	49	49	201	434	0	10	25	413	401	0		
128	Zangthi BHU	5	5	15	27	27	22	19	316	2	6	6	262	238	26		
Samtse																	
129	Bara BHU	5	8	31	56	56	49	483	307	1	34	175	734	660	18		
130	Chengmari BHU	0	4	36	68	68	67	484	486	4	37	129	788	748	0		
131	Doongtoed BHU	3	24	27	22	22	28	398	253	0	9	80	313	301	0		
132	Dorokha BHU	0	17	22	34	34	53	703	482	0	17	65	642	635	3		
133	Duenchukha BHU	1	2	8	30	30	33	565	442	0	18	222	424	424	0		

Contd/..... Table 4.12 Facility Wise Selected Services - 2015

Sl.#	Facility Name	Trained Delivery		Vaccination Services				Family Planning				*No. of households with			
		Home	Facility	BCG	OPV3	DPT- HepB - Hib 3	Measles	Oral Pills (cycles)	DMPA (Injected)	Current IUD User	Tubectomy	Vasectomy	Latrine	water supply	Pipe water not functioning
134	Ganthog BHU	0	0	33	52	52	53	228	227	0	2	8	402	400	0
135	Gomtu Hospital	3	69	92	132	132	107	2048	999	83	76	120	1917	1864	33
136	Panbari BHU	0	16	53	89	89	91	1593	494	7	12	225	924	799	28
137	Pemaling BHU	0	3	12	30	30	25	196	117	1	21	89	364	362	2
138	Samtse Hospital	0	210	142	120	120	136	1028	880	35	179	198	2018	1981	0
139	Sangngag Chhoeling BHU	0	0	18	34	34	43	325	272	1	18	43	550	546	0
140	Sengteng BHU	0	11	26	44	44	51	362	300	1	17	48	403	374	0
141	Sibsoo Hospital	0	135	84	97	97	101	1473	953	0	63	255	1437	1437	0
142	Tendruk BHU	2	14	64	99	99	85	1275	748	17	35	286	1376	1376	0
143	Ugyentse BHU	0	6	9	18	18	16	127	168	0	8	13	332	328	0
144	Yoeseltse BHU	8	6	30	38	38	51	286	239	0	0	0	640	614	26
Sarpang															
145	Chhuzaggang BHU	0	9	12	23	23	23	191	228	16	32	22	418	396	0
146	Chokhorling BHU	0	11	34	75	75	96	373	720	9	19	33	1044	1044	0
147	Gelegphu CRR Hospital	4	800	574	285	285	271	2189	1959	76	120	89	1766	1645	0
148	Gongdara BHU	0	5	5	8	8	12	414	187	7	2	7	172	162	17
149	Jangchubling BHU	0	7	13	27	27	22	180	467	0	0	27	250	243	0
150	Jigme Chhoeling BHU	0	22	14	46	46	40	231	407	8	56	67	520	480	38
151	Jigmedling BHU	0	0	0	0	0	0	123	40	0	0	0	0	0	0
152	Lhayul BHU	1	8	12	25	25	20	223	238	0	0	30	238	238	7

Contd/..... Table 4.12 Facility Wise Selected Services - 2015

Sl.#	Facility Name	Trained Delivery		Vaccination Services				Family Planning						*No. of households with			
		Home	Facility	BCG	OPV3	DPT- HepB - Hib 3	Measles	Oral Pills (cycles)	DMPA (Injected)	Current IUD User	Tubectomy	Vasectomy	Latrine	water supply	Pipe water not functioning	Water & Sanitation	
																Water	Sanitation
153	Norbuling BHU	0	16	23	32	32	33	343	423	23	45	50	681	673	8		
154	Phibsoo BHU	0	0	0	0	0	0	0	0	0	0	0	0	0	0		
155	Sarpang Hospital	0	49	71	74	74	76	851	1078	46	51	48	1278	1269	11		
156	Sarpangsheer BHU	0	6	2	9	9	11	28	126	0	3	11	88	84	0		
157	Seng Gey BHU	1	5	11	14	14	16	292	119	2	5	8	273	273	0		
158	Taraythang BHU	0	4	3	7	7	5	20	85	0	2	0	80	80	0		
159	Umling BHU	1	22	10	22	22	20	259	293	15	14	21	397	397	0		
*Thimphu																	
160	Barshong BHU	0	0	0	1	1	2	6	6	4	11	2	35	10	0		
161	Chamgang BHU	0	0	2	21	21	19	181	174	23	25	19	256	253	3		
162	Chamgang RBP BHU	0	0	0	0	0	0	0	0	0	0	0	0	0	0		
163	Changjiji Satellite Clinic	0	0	0	0	0	0	510	531	0	0	0	0	0	0		
164	CHU JDWNRH	0	200	1347	486	486	773	499	1258	0	0	0	0	0	0		
165	Dechhencholing BHU I	1	7	21	222	222	221	852	1046	0	0	0	0	0	0		
166	Genyenkha BHU	0	8	2	12	12	15	81	82	0	17	37	199	199	0		
167	Gidakom Hospital	0	4	44	122	123	116	662	810	24	119	42	1290	1270	20		
168	Hongtsho BHU	0	1	3	19	19	15	98	168	17	13	15	348	337	0		
169	IBF IMTRAT Hospital	0	0	0	0	0	0	0	0	0	0	0	0	0	0		
170	JDWNR Hospital	0	3695	2839	822	822	955	1272	2448	0	0	0	0	0	0		
171	Jungshina Satellite Clinic	0	0	0	224	223	206	811	1007	0	0	0	0	0	0		

Contd./..... Table 4.12 Facility Wise Selected Services - 2015

Sl.#	Facility Name	Trained Delivery		Vaccination Services				Family Planning					*No. of households with Water & Sanitation		
		Home	Facility	BCG	OPV3	DPT- HepB - Hib 3	Measles	Oral Pills (cycles)	DMPA (Injected)	Current IUD User	Tubectomy	Vasectomy	Latrine	water supply	Pipe water not functioning
172	Kuzhugchen BHU	0	0	3	13	13	8	122	121	24	21	11	675	669	6
173	Lingzhi BHU	4	3	4	12	12	11	73	131	0	2	5	93	76	4
174	Lungtenphu RBA Hospital	0	0	0	201	201	189	578	1026	0	0	0	0	0	0
175	Motithang Satellite Clinic	0	0	4	153	153	161	564	584	0	0	0	0	0	0
176	RBP HQ Clinic	0	0	0	0	0	0	534	353	0	0	0	0	0	0
177	Soe BHU	0	0	0	1	1	0	2	43	0	2	2	30	30	0
Trashigang															
178	Bartsham BHU I	0	26	25	26	26	29	33	38	3	39	28	440	440	0
179	Bidoong BHU	0	1	10	20	20	14	33	89	3	5	3	250	250	0
180	Bikhar BHU	1	7	9	23	23	19	120	280	12	8	18	371	371	0
181	Chaling BHU	2	1	8	11	11	6	155	210	9	8	9	197	185	4
182	Chhangmi BHU	2	6	9	26	26	29	110	202	4	12	8	337	318	9
183	Joenkhar Sub-Post	2	1	4	7	7	8	4	79	1	3	11	82	81	1
184	Kanglung BHU I	6	47	89	119	119	112	376	609	35	13	25	1067	1067	0
185	Kangpar BHU	1	9	16	26	26	30	130	295	34	14	75	347	345	9
186	Khaling BHU I	0	16	33	52	52	55	87	418	16	18	12	552	552	6
187	Lumang BHU	1	4	18	23	23	29	36	278	0	0	0	211	211	0
188	Merag BHU	10	7	17	32	32	31	95	167	19	13	6	400	369	31
189	Passaphoog Sub-Post	0	0	0	0	0	1	3	72	0	5	31	93	93	0
190	Pheppari Sub-Post	2	0	10	19	19	32	72	132	0	0	19	205	205	0

Contd/.... Table 4.12 Facility Wise Selected Services - 2015

Sl.#	Facility Name	Trained Delivery		Vaccination Services				Family Planning				*No. of households with			
		Home	Facility	BCG	OPV3	DPT- HepB - Hib 3	Measles	Oral Pills (cycles)	DMPA (Injected)	Current IUD User	Tubectomy	Vasectomy	Latrine	water supply	Pipe water not functioning
191	Phongmed BHU	4	11	16	33	33	36	133	329	2	6	8	314	314	0
192	Radi BHU	0	11	25	34	34	34	322	418	50	18	21	610	610	0
193	Rangoong BHU I	1	35	25	41	41	42	343	381	14	27	34	495	494	1
194	Riserboo Hospital	0	54	46	48	48	62	281	731	4	0	5	677	662	1
195	Sagteng BHU	34	1	41	51	51	55	34	286	0	1	0	338	332	6
196	Thongrong Sub-Post	0	2	3	4	4	5	14	56	0	1	2	86	85	0
197	Thoongkhar BHU	1	4	15	21	21	22	113	143	0	0	9	231	231	0
198	Trashigang Hospital	1	199	111	92	92	114	313	598	89	28	18	985	976	0
199	Tsangpo BHU	1	8	16	42	42	43	340	179	11	6	13	286	286	0
200	Udzorong BHU	11	18	37	59	59	64	817	171	2	4	63	480	480	0
201	Yabrang BHU	4	7	12	18	18	22	108	127	3	6	16	186	186	0
202	Yangnyer BHU	12	30	26	50	50	65	605	341	15	2	39	547	547	0
203	Yonphoogla IMTRAT Hospital	0	0	0	0	0	0	0	0	0	0	0	0	0	0
Trashiyangtse															
204	Dungzam BHU	0	5	29	37	37	36	46	209	19	17	7	332	302	4
205	Jamkhar BHU	3	6	20	16	16	19	89	146	4	13	22	303	303	0
206	Jangphutse Sub-Post	1	0	4	7	8	7	45	102	0	0	0	88	73	15
207	Khamdang BHU I	1	43	48	77	77	71	193	359	13	9	17	623	617	15
208	Khi Nyei BHU	1	16	34	31	31	26	134	153	32	9	19	362	362	0
209	Melongkhar BHU	2	7	5	9	9	3	77	81	0	15	0	154	154	0

Contd/..... Table 4.12 Facility Wise Selected Services - 2015

Sl #	Facility Name	Trained Delivery		Vaccination Services				Family Planning					*No. of households with Water & Sanitation			
		Home	Facility	BCG	OPV3	DPT- HepB - Hib 3	Measles	Oral Pills (cycles)	DMPA (injected)	Current IUD User	Tubectomy	Vasectomy	Latrine	water supply	Pipe water not functioning	
210	Rabtey Sub-Post	2	0	4	8	8	4	28	31	0	5	8	115	110	5	
211	Ramjar BHU	0	8	11	18	18	16	211	102	2	23	28	286	280	2	
212	Thragom BHU	0	2	3	15	15	19	105	194	3	0	0	207	205	2	
213	Tongmizhangsa BHU	0	4	12	21	21	23	78	57	3	6	10	265	263	0	
214	Yangtse Hospital	0	58	60	85	85	84	422	783	14	27	22	1476	729	18	
Trongsa																
215	Bemji BHU	9	2	20	24	24	20	30	57	36	12	12	218	208	10	
216	Jangbi BHU	2	0	5	6	6	5	48	75	1	0	19	53	60	26	
217	Kella Sub-Post	0	0	3	5	5	5	37	80	1	1	10	60	58	0	
218	Korphaog BHU	0	0	1	0	0	1	33	46	0	0	0	59	60	0	
219	Kuengarabten BHU	0	15	32	76	76	58	333	799	14	20	41	742	730	0	
220	Nabji Sub-Post	0	0	1	6	4	3	47	59	0	0	1	59	54	5	
221	Nimshong Sub-Post	0	0	1	5	5	9	14	60	0	1	3	82	81	1	
222	Tongtophel BHU	3	10	26	97	57	68	687	381	1	12	34	429	424	11	
223	Trashling BHU	2	9	10	21	21	26	262	232	4	14	4	278	283	5	
224	Trongsa Hospital	2	57	46	91	91	92	477	516	19	35	31	788	784	0	
Tsirang																
225	Barshong BHU	0	3	2	16	14	13	125	244	0	11	21	228	218	4	
226	Damphu Hospital	0	136	135	176	177	191	2117	1949	30	65	81	1824	1824	0	
227	Doonglagang BHU	1	9	17	28	28	32	283	295	0	14	57	380	374	39	
228	Mendrelgang BHU	0	2	13	34	34	35	416	380	16	23	40	594	592	2	

Contd/..... Table 4.12 Facility Wise Selected Services - 2015

Sl.#	Facility Name	Trained Delivery		Vaccination Services						Family Planning						*No. of households with			
		Home	Facility	BCG	OPV3	DPT- HepB - Hib 3	Measles	Oral Pills (cycles)	DMPA (Injected)	Current IUD User	Tubectomy	Vasectomy	Latrine	water supply	Pipe water not functioning				
229	Pungtinchu BHU	1	1	9	18	18	24	41	219	1	12	32	296	293	0				
230	Semjong BHU	0	13	11	27	27	15	273	364	0	19	8	286	286	0				
231	Sergithang BHU	0	6	9	32	32	27	169	367	2	17	24	313	296	82				
232	Tsirang Toed BHU	4	12	17	34	34	34	58	274	21	18	61	285	285	0				
Wangdue																			
233	Dangchhu BHU	1	5	11	38	38	39	54	298	0	18	17	293	290	0				
234	Esa BHU I	5	25	31	107	107	124	164	558	8	97	166	959	958	0				
235	Gaselo BHU	3	19	20	44	44	43	282	306	8	60	37	647	640	12				
236	Jala Ula BHU	0	0	3	33	33	40	81	229	2	33	61	467	452	0				
237	Kamichhu BHU	0	9	23	36	36	53	205	278	1	8	46	361	170	0				
238	Khotokha Sub-Post	0	0	1	3	3	13	39	72	0	9	9	136	133	3				
239	Lopokha Sub-Post	0	0	0	1	1	2	1	19	4	4	17	52	47	0				
240	Saephoog BHU	5	4	10	33	33	29	191	412	0	7	1	369	364	6				
241	Samtengang BHU	1	11	15	56	56	51	27	197	1	17	87	666	591	0				
242	Teki Agona BHU	0	1	2	13	13	18	58	116	1	41	42	299	296	3				
243	Uma BHU	1	0	0	3	3	5	7	41	1	8	21	71	71	2				
244	Wangdue Hospital	0	214	182	346	346	267	1141	1586	89	252	260	2878	2810	68				
245	Wangdue RBA Hospital	0	12	26	46	46	53	135	406	0	0	0	0	0	0				
Zhemgang																			
246	Bjoka BHU	0	6	4	8	8	12	84	176	20	0	7	123	115	0				
247	Buli BHU	2	4	5	25	25	25	87	146	7	18	7	232	230	0				
248	Gongphu BHU	2	1	3	6	6	6	77	118	1	4	5	118	118	0				

Contd/..... Table 4.12 Facility Wise Selected Services - 2015

Sl.#	Facility Name	Trained Delivery		Vaccination Services				Family Planning					*No. of households with Water & Sanitation		
		Home	Facility	BCG	OPV3	DPT- HepB - Hib 3	Measles	Oral Pills (cycles)	DMPA (Injected)	User	Tubectomy	Vasectomy	Latrine	water supply	Pipe water not functioning
249	Goshing BHU	1	11	29	32	32	28	202	250	6	3	16	244	236	2
250	Kagtong BHU	1	0	6	12	12	8	79	124	18	1	2	116	0	4
251	Khomshar BHU	9	2	13	35	35	30	108	218	5	2	5	232	223	0
252	Kradijong BHU	1	0	0	1	1	1	52	77	9	2	1	47	45	2
253	Langdorbi BHU	0	5	4	21	21	25	33	179	0	6	1	132	110	4
254	Manas BHU	0	0	0	2	2	1	10	11	0	1	1	41	41	0
255	Namregang BHU	2	0	2	3	3	2	69	43	6	0	2	56	54	0
256	Panbang BHU I	1	37	30	34	34	40	232	269	0	6	26	370	369	12
257	Pantang BHU	4	7	15	28	26	25	161	348	11	5	5	168	153	3
258	Shingkar BHU	2	0	6	23	23	28	118	269	12	8	8	225	225	0
259	Tshaidang BHU	2	1	9	24	24	31	112	252	0	3	1	146	138	2
260	Yebilaptsa Hospital	3	17	26	52	51	44	272	242	11	17	18	538	534	0
261	Zhemgang BHU I	1	30	37	60	58	48	165	367	20	20	20	556	550	6
Total		528	10902	12177	12282	12227	12816	76799	86322	2774	5381	8122	110610	107005	2395

Note: * Thimphu and Phuentsholing urban areas are not covered by the Annual Household Survey.

Table 4.13 Malaria Cases - 2015

Sl.#	Type	Age/Gender								Total
		0 – 4 years		5 – 14 years		15 – 49 years		50 + years		
		Male	Female	Male	Female	Male	Female	Male	Female	
1	Mix	0	0	0	0	0	0	0	0	0
2	PF	1	0	2	1	4	4	0	1	13
3	PV	0	0	3	4	7	0	4	3	21

Mix - Mixed

PF – Plasmodium Falciparum

PV – Plasmodium Vivax

Table - 4.14 Number of Cases availing Traditional Medicine Service - 2015

No.	Traditionnal Medicine Units	New	Old	Total
Bumthang				
1	Bumthang	1701	2760	4461
2	Chumey	509	812	1321
3	Ura	656	202	858
Chhukha				
4	Chhukha	319	213	532
5	Gedu	779	570	1349
6	Phuentsholing	725	750	1475
7	Tshimalakha	429	333	762
Dagana				
8	Dagana	567	488	1055
9	Dagapela	899	942	1841
10	Lhamoi Zhingkha	135	89	224
Gasa				
11	Gasa	262	157	419
Haa				
12	Bali	1381	2887	4268
Lhuentse				
13	Lhuentse	0	0	0
14	Tangmachu	480	176	656
Monggar				
15	Daksa	366	89	455
16	Drametse	514	627	1141
17	Monggar	1044	1366	2410
18	Kengkhar	517	259	776
Paro				
19	Paro	3061	5290	8351
Pemagatshel				
20	Dungmin	345	18	363
21	Nganglam	526	539	1065
22	Pemagatshel	720	535	1255
23	Yurung	477	329	806
Punakha				
24	Punakha	3152	1455	4607

Contd/.....Table 4.14 Number of Cases availing Traditional Medicine Service – 2015

No.	Tradionnal Medicine Units	New	Old	Total
Samdrup Jongkhar				
25	Gomdar	730	322	1052
26	Jomotsangkha	257	172	429
27	Martsala	398	121	519
28	Samdrup Choiling	383	167	550
29	Samdrup Jongkhar	1364	1294	2658
Samtse				
30	Dorokha	350	276	626
31	Gomtu	290	288	578
32	Samtse	486	1080	1566
Sarpang				
33	Gelephu	2408	1348	3756
34	Sarpang	594	869	1463
Thimphu				
35	Gedakom	257	566	823
36	National Traditional Medicine Hospital (NTMH)	14683	21903	36586
37	Lingshi	171	26	197
Trashigang				
38	Bartsham	84	50	134
39	Kanglung	225	26	251
40	Rangjung	830	404	1234
41	Riserboo	366	504	870
42	Trashigang	680	712	1392
Trashiyangtse				
43	Khamdang	89	70	159
44	Trashiyangtse	352	395	747
Trongsa				
45	Korphu	63	103	166
46	Tongtongphel	408	205	613
47	Trongsa	1861	1471	3332
Tsirang				
48	Damphu	921	1272	2193
Wangdue				
49	Bajo	1674	2167	3841
50	Gaselo	220	131	351
51	Phubjikha	649	759	1408
Zhemgang				
52	Goshing	153	27	180
53	Pangbang	164	102	266
54	Yebilabtsa	191	152	343
55	Zhemgang	164	132	296
Total		51404	58520	109924

Table - 4.15 Therapeutic Services provided by Traditional Medicine Service - 2015

No.	Traditional Medicine Units	Gold needle	Sliver Needle	Blood Letting	Cauterization/ Heated Oil	Cupping	Localize Steaming	Steam bath	Herbal bath	Nasal Irrigation	Others	Total
Bumthang												
1	Bumthang	104	0	0	22	0	241	0	0	0	23	390
2	Chumey	120	18	0	82	0	265	0	0	15	0	500
3	Ura	161	0	0	0	0	324	0	0	0	0	485
Chhukha												
4	Chhukha	65	0	0	20	0	1554	0	0	68	46	1753
5	Gedu	55	0	1	146	0	542	0	0	0	9	753
6	Phuentsholing	99	0	1	6	0	52	0	0	0	0	158
7	Tshimalakha	54	0	4	43	4	263	9	0	7	0	384
Dagana												
8	Dagana	141	4	0	137	0	273	0	0	0	0	555
9	Dagapela	221	42	4	155	0	333	0	90	38	5	888
10	Lhamoi Zhingkha	13	0	0	27	0	256	0	0	0	0	296
Gasa												
11	Gasa	109	0	0	0	0	0	0	0	0	0	109
Haa												
12	Bali	69	0	0	38	2	53	0	0	0	0	162
Lhuentse												
13	Lhuentse	57	0	0	20	0	193	0	0	0	0	270
14	Tangmachu	41	0	0	0	0	0	0	0	0	0	41
Monggar												
15	Daksa	109	0	0	0	0	0	0	0	0	0	109
16	Drametse	185	6	0	0	0	0	0	0	0	0	191
17	Monggar	663	8	14	35	0	1334	1137	0	43	0	3234
18	Kengkhar	541	0	0	0	0	0	0	0	0	0	541
Paro												
19	Paro	479	14	23	197	3	836	120	0	40	27	1739
Pemagatshel												
20	Dungmin	191	0	0	1	0	0	0	0	0	0	192
21	Nganglam	146	0	0	24	0	172	0	0	0	0	342
22	Pemagatshel	604	3	0	3	0	647	0	0	0	0	1257
23	Yurung	155	0	0	42	0	120	0	0	0	0	317
Punakha												
24	Punakha	137	0	0	45	0	407	0	0	0	0	589

Contd/.....Table - 4.15 Therapeutic Services provided by Traditional Medicine Service - 2015

No.	Traditional Medicine Units	Gold needle	Sliver Needle	Blood Letting	Cauterization/ Heated Oil	Cupping	Localize Steaming	Steam bath	Herbal bath	Nasal Irrigation	Others	Total
Samdrup Jongkhar												
25	Gomdar	649	52	0	0	0	0	0	0	0	0	701
26	Martsala	654	0	0	0	0	0	0	0	0	0	654
27	Jomotsangkha	213	0	0	0	0	0	0	0	0	0	213
28	Samdrup Choiling	241	0	0	0	0	0	0	0	0	0	241
29	Samdrup Jongkhar	1025	0	0	0	0	276	0	0	0	0	1301
Samtse												
30	Dorokha	45	0	0	0	0	0	0	0	0	0	45
31	Gomtu	54	0	0	59	0	0	0	0	0	0	113
32	Samtse	122	0	2	0	0	164	0	0	0	0	288
Sarpang												
33	Gelephu	807	0	67	586	0	1045	12	0	11	81	2609
34	Sarpang	66	0	0	0	0	649	0	0	0	0	715
Thimphu												
35	Gedakom	47	0	0	42	0	0	0	0	0	0	89
36	National Traditional Medicine Hospital (NTMH)	3887	26	199	4633	231	21369	6145	10451	1144	2238	50324
37	Lingzhi	23	0	0	43	0	0	0	0	0	0	66
Trashigang												
38	Bartsham	127	0	0	0	0	0	0	0	0	0	127
39	Kanglung	26	0	0	7	0	0	0	0	0	0	33
40	Rangjung	1675	0	0	2	0	1595	0	0	0	1	3273
41	Riserboo	261	3	30	7	0	385	0	0	0	0	686
42	Trashigang	1183	67	0	79	0	407	0	0	33	0	1769
Trashiyangtse												
43	Khamdang	40	0	0	34	0	58	0	0	0	0	132
44	Trashiyangtse	248	35	0	88	0	314	0	0	29	0	714
Trongsa												
45	Korphu	128	0	0	40	0	0	0	0	0	0	168
46	Tongtongphel	156	2	0	0	0	0	0	0	0	0	158
47	Trongsa	261	0	9	347	0	399	0	0	0	0	1016
Tsirang												
48	Damphu	193	3	8	165	13	380	0	0	0	0	762
Wangdue												
49	Bajo	250	4	46	123	21	0	0	0	188	1	633
50	Gaselo	29	0	0	0	0	0	0	0	0	0	29
51	Phubjikha	317	0	0	0	0	0	0	0	0	0	317

Contd/.....Table - 4.15 Therapeutic Services provided by Traditional Medicine Service - 2015

No.	Traditional Medicine Units	Gold needle	Sliver Needle	Blood Letting	Cauterization/ Heated Oil	Cupping	Localize Steaming	Steam bath	Herbal bath	Nasal Irrigation	Others	Total
Zhemgang												
52	Goshing	57	0	0	9	0	168	10	0	0	0	244
53	Pangbang	87	0	0	14	0	408	0	0	0	0	509
54	Yebilabtsa	24	0	0	0	0	271	0	0	0	0	295
55	Zhemgang	52	0	0	3	0	167	0	0	16	0	238
Total		17469	287	408	7324	274	35920	7433	10541	1665	2422	83743

Table 5: Health risk factors

Table 5.1 Selected health risk factors indicator

Sl. #	Indicators	Year	Source
		2015	
1	Population with access to improved drinking water sources (%)	97.7	NHS 2012
2	Population with access to improved sanitation facility (%)	66.3	NHS 2012
3	Percentage of households disposing off their household wastes using public garbage collection system (%)	22.4	HNS 2012
4	Low-birth weight newborns (%)	9.9	BMIS 2010
5	Infants exclusively breastfed for the first 6 months of life (%)	48.7	BMIS 2010
6	Children aged <5 years stunted (%)	33.5	BMIS 2010
7	Children aged <5 years underweight (%)	12.7	BMIS 2010
8	Children aged <5 years wasting (%)	5.9	BMIS 2010
9	Prevalence of Injury (%)	1.2	NHS 2012
10	Percentage of injured population due to vehicular accident (%)	14.6	NHS 2012
11	Population aged 15-75 years who currently use alcohol (%)	28.1	NHS 2012
12	Population aged 10-75 years who drank alcohol in the past 12 months (%)	28.5	NHS 2012
13	Population aged 10-75 years who drank alcohol in the past 12 months on a daily basis (%)	24.0	NHS 2012
14	Population aged 15-75 years who currently smoke tobacco (%)	4.0	NHS 2012
15	Population aged 15-75 years who use smokeless tobacco (%)	47.9	NHS 2012
16	Population aged 15-75 years who eat doma/betel quid (%)	43.9	NHS 2012
17	Population aged 15-75 years who use chewing tobacco (%)	7.9	NHS 2012
18	Population aged 15-24 years with comprehensive correct knowledge of HIV/AIDS (%)	23.2	NHS 2012
19	Population aged 10-75 years with comprehensive correct knowledge of HIV/AIDS (%)	16.8	NHS 2012
20	Women aged 15-49 years aware of all three means of mother to child transmission of HIV/AIDS (%)	46.9	NHS 2012
21	Population aged 15-75 years who ever used drugs/substance to get high (%)	2.1	NHS 2012
22	Population aged 10-75 years who do sports/fitness/recreational activities that cause an increase of breathing or heart rate for at least 10 minutes continuously (%)	25.5	NHS 2012

Table 5.2 Sanitation & Hygiene by Districts - 2015

Sl.#	District	Percentage							
		Latrine	Water Supply	Household with Functional Piped water	Drainage & Footpath	Household with Animal Shed	Household with Vegetable Garden	Household with Garbage Pit	
1	Bumthang	99.3	99.1	99.1	55.7	56.8	85.4	63.0	
2	Chukha	95.4	96.1	93.5	71.7	90.4	70.2	78.4	
3	Dagana	96.1	95.3	84.3	77.1	84.6	84.2	83.2	
4	Gasa	86.1	96.9	78.9	46.9	63.9	68.0	57.7	
5	Haa	97.4	97.6	96.8	96.6	82.1	69.2	71.1	
6	Lhuentse	99.4	99.8	99.6	80.5	88.6	80.7	82.6	
7	Monggar	97.1	97.3	96.1	83.6	98.2	78.1	82.9	
8	Paro	98.6	97.8	93.4	75.2	70.6	65.5	52.4	
9	Pemagatshel	99.6	97.4	93.8	45.3	88.2	87.1	84.9	
10	Punakha	96.1	96.7	95.4	76.8	56.2	71.7	80.3	
11	Samdrup Jongkhar	93.8	98.1	97.2	63.8	69.0	74.2	77.9	
12	Samtse	96.2	96.9	96.0	62.2	94.9	71.2	80.3	
13	Sarpang	98.6	97.1	96.0	68.4	80.8	76.8	79.8	
14	Thimphu	98.6	97.1	96.0	52.1	91.4	63.9	74.3	
15	Trashigang	89.2	96.5	94.7	61.1	96.1	86.7	71.6	
16	Trashiyangtse	94.2	99.0	98.3	57.6	92.1	77.0	67.2	
17	Trongsa	93.5	98.5	96.4	69.0	79.1	62.9	58.3	
18	Tsirang	97.2	99.1	96.1	38.6	84.8	81.0	75.4	
19	Wangdue Phodrang	95.7	94.9	93.6	77.2	90.8	64.9	77.0	
20	Zhemgang	98.6	93.9	92.9	52.1	77.5	87.2	65.7	
Total		96.3	97.2	95.0	66.6	85.1	74.8	74.7	

Table 5.3 Population with Impairment by Districts - 2015

Sl.#	District	Impairment Types				
		Physical	Speech	Hearing	Visual	Multiple
1	Bumthang	26	25	106	58	51
2	Chhukha	69	107	166	103	163
3	Dagana	63	99	143	55	93
4	Gasa	4	1	8	6	8
5	Haa	8	22	51	17	11
6	Lhuentse	41	34	30	19	27
7	Monggar	79	89	145	79	105
8	Paro	75	73	249	163	98
9	Pemagatshel	56	68	174	67	59
10	Punakha	46	30	111	77	48
11	Samdrup Jongkhar	47	77	179	127	111
12	Samtse	193	177	332	131	375
13	Sarpang	41	73	128	57	80
14	Thimphu	48	25	38	32	26
15	Trashigang	38	13	13	19	14
16	Trashiyangtse	86	74	202	141	70
17	Trongsa	42	17	61	48	32
18	Tsirang	65	71	137	60	134
19	Wangdue Phodrang	57	70	269	186	61
20	Zhemgang	43	71	90	107	66
Total		1127	1216	2632	1552	1632

FACT-SHEET: Health workforce and infrastructure

Figure 6.1 - Current health facilities [2015] map

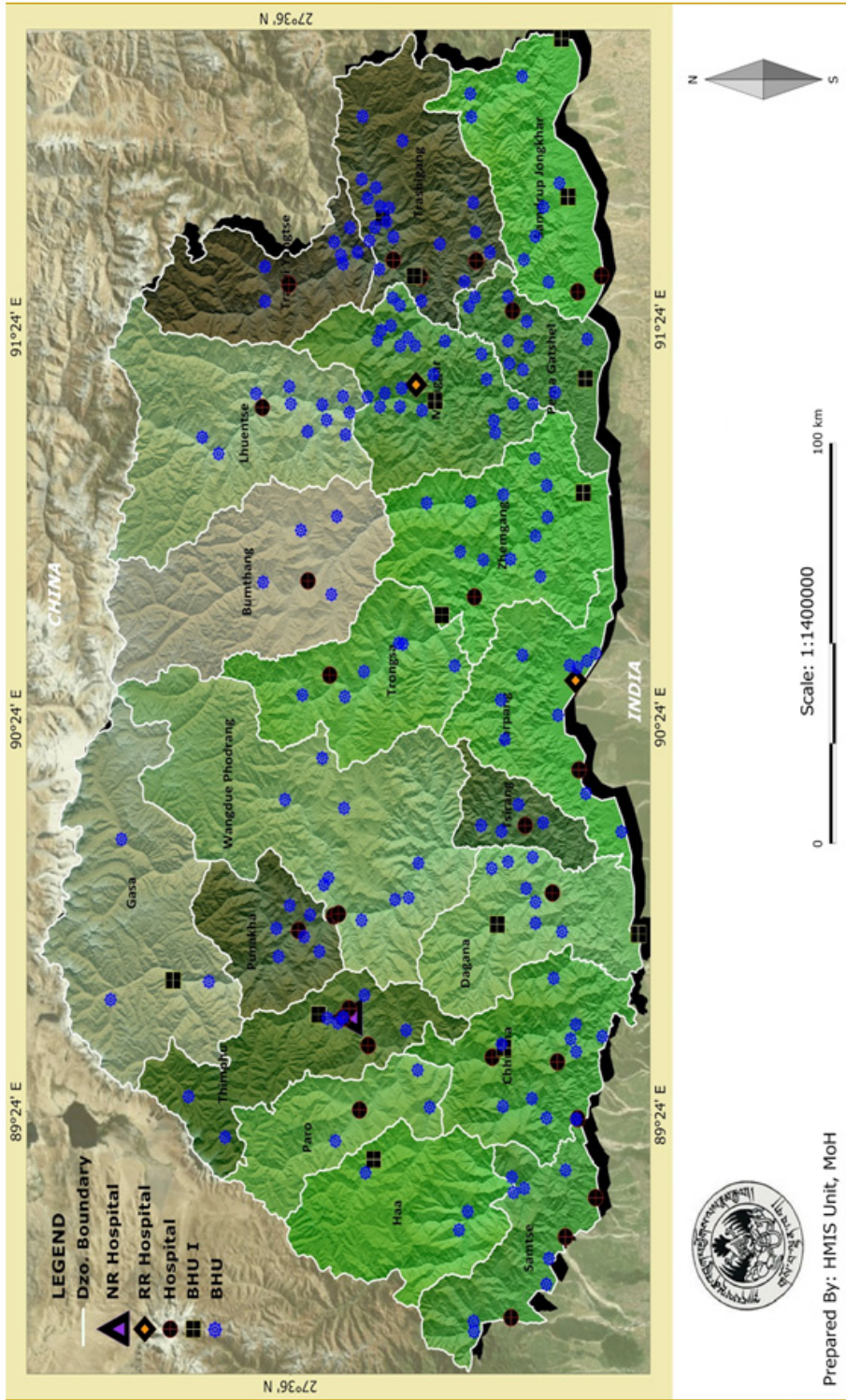


Table 6: Health workforce and infrastructure
Table 6.1 Selected health human resource and infrastructure indicator

Sl. #	Indicators	Year					Source
		2011	2012	2013	2014	2015	
1	Number of Doctors and density (per 10,000 population)	181 [2.6]	194 [2.7]	203 [2.8]	244 [3.3]	251 [3.3]	HRM, MoH
2	Number of Nurses and density (per 10,000 population)	723 [10.2]	736 [10.2]	799 [10.9]	957 [12.8]	1070 [14.1]	HRM, MoH
3	Number of Pharmacists and density (per 10,000 population)	11 [0.2]	11 [0.2]	9 [0.1]	14 [0.2]	15 [0.2]	HRM, MoH
4	Number HA&BHW and density (per 10,000 population)	572 [8.1]	578 [8.0]	608 [8.3]	632 [8.5]	643 [8.5]	HRM, MoH
5	Number of Drungtshos (Indigenous Physicians) and density (per 10,000 population)	38 [1.0]	35 [1.0]	35 [0.5]	46 [0.6]	47 [0.6]	HRM, MoH
6	Number of sMenpas (Sowa Menpas) and density (per 10,000 population)	56 [1.0]	63 [1.0]	82 [1.1]	90 [1.2]	100 [1.3]	HRM, MoH
7	Number and distribution of health facilities (per 10,000 population)	215 [3.0]	222 [3.1]	236 [3.2]	262 [3.5]	266 [3.5]	HMIS, MoH
8	Ratio of beds per Nurses	1.8	1.7	1.6	1.3	1.2	HMIS, MoH
9	Ratio of Nurses per Doctor	4.0	3.8	3.9	3.9	4.3	HMIS, MoH

Table 6.2 Health Human Resource - 2015

Sl.#	Categories of Health Workers	Gender		Total
		Male	Female	
1	Doctors (MBBS/Specialists)	176	75	251
2	Assistant Clinical Officers (ACO)	30	5	35
3	Nurses (Assistant Nurse/GNM/B. Sc. Nurse)	450	620	1070
4	Health Assistants	284	264	548
5	Basic Health Workers	95	0	95
6	Drungtshos (Indigenous Physicians)	38	9	47
7	sMenpas (Sowa Menpas)	71	29	100
8	Pharmacists	11	4	15
9	Medical Lab. Technologists	28	10	38
10	Physiotherapists	8	4	12
11	Technicians	544	356	900
12	Administrative & Support Staff (Regular)	696	416	1112
13	General Service Personnel (GSP)	242	190	432
14	Elementary Service Personnel (ESP)	141	21	162
Total Staff Strength, MoH		2814	2003	4817

Table 6.3 Health Facilities by Districts - 2015

District	Hospital			Facility Type			ORC with shed			ORC without shed		
	Hospital	BHU I	BHU II	Sub-post	Ind. Unit	ORC with shed	ORC without shed	ORC with shed	ORC without shed			
Bumthang	1	0	5	0	3	12	0	12	0			
Chhukha	3	2	12	1	4	38	6	38	6			
Dagana	1	2	7	0	3	30	2	30	2			
Gasa	0	1	3	0	1	5	1	5	1			
Haa	1	1	4	0	1	8	9	8	9			
Lhuentse	1	0	14	0	2	31	1	31	1			
Monggar	1	1	22	5	4	53	0	53	0			
Paro	1	0	3	0	1	17	5	17	5			
Pemagatshel	1	1	11	7	4	34	5	34	5			
Punakha	1	0	7	1	1	11	0	11	0			
Samdrup Jongkhar	2	3	7	0	5	28	4	28	4			
Samtse	2	1	13	0	3	45	4	45	4			
Sarpang	2	1	11	1	2	12	1	12	1			
Thimphu	*5	1	**12	0	2	5	13	5	13			
Trashigang	3	5	14	4	5	55	1	55	1			
Trashiyangtse	1	1	7	2	2	21	2	21	2			
Trongsa	1	0	6	3	3	21	0	21	0			
Tsirang	1	0	7	0	1	14	5	14	5			
Wangdue Phodrang	2	1	8	2	3	24	5	24	5			
Zhemgang	1	2	11	2	4	30	4	30	4			
Total	31	23	184	28	54	494	68	494	68			

Note :

* Indigenous hospital included under hospital

** Satellite Clinic included under BHU II

Table 6.4 Health Infrastructure by Districts - 2015

District	Hospital	Basic Health Unit	Sub-post	No. of ORC	
				With Shed	Without Shed
Bumthang	Bumthang			1	0
		Choechor Toe		1	0
		Chumey		3	0
		Dhur		0	0
		Tang		4	0
		Ura		3	0
Total	1	5	0	12	0
Chhukha	Tsimalakha			3	0
	Phuentsholing			4	0
	Gedu			3	0
	Chapcha			3	1
	Chhukha I			2	1
	Darla			0	1
	Bongo			2	2
	Getana			2	0
	Chong-Geykha			4	0
	Doogna			3	0
	Khatikha I			0	0
	Loggchina			3	0
	Shinchula			4	1
	Metakha			2	0
	Rangaytung			3	0
	Tashigatshel RBP			0	0
	MI ROOM			0	0
	Arikha			0	0
			Baikunza		0
Total	3	14	1	38	6
Dagana	Dagapela			8	0
		Dagana I		3	0
		Jurugang		1	0
		Khagochen		1	0
		Akhochen		1	2
		Drukjeygang		3	0
		Tsangkha		3	0
		Lagyab		4	0
		Lhamoizingkha I		5	0
		Nimtola		1	0
		Total	1	9	0
Gasa		Damji		2	0
		Gasa I		1	0
		Laya		1	0
		Lunana		1	1
Total	0	4	0	5	1

Contd/....Table 6.4 Health Infrastructure by Districts - 2015

District	Hospital	Basic Health Unit	Sub-post	No. of ORC	
				With Shed	Without Shed
Haa	IMTRAT			0	0
		Bali I		4	1
		Yangthang		1	1
		Sanbay		3	1
		Ngetshena		0	1
		Dorithasa		0	5
Total	1	5	0	8	9
Lhuentse	Lhuentse			0	0
		Autsho		2	0
		Dangling		1	0
		Dungkhar		3	0
		Ganglakhema		1	0
		Gortsum		2	0
		Khoma		4	0
		Ladrong		3	0
		Minjay		4	0
		Ney		1	0
		Patpachhu		3	0
		Tagmochhu		2	1
		Thimyul		2	0
		Tsaenkhar		2	0
		Zangkhar		1	0
Total	1	14	0	31	1
Monggar	Monggar			5	0
		Baanjar		0	0
		Balam		3	0
		Boompazor		3	0
		Chagsskhar		4	0
		Chhaling		1	0
		Daagsa		2	0
		Dramedtse		4	0
		Ganglapong		0	0
		Gyalpoizhing I		0	0
		Jurmed		3	0
		Kengkhar		2	0
		Lingmethang		8	0
		Muhoong		0	0
		Nagor		3	0
		Narang		1	0
		Ngatshang		0	0
		Sengor		0	0
		Serzhong		3	0
		Thang-Rong		4	0
		Tsakaling		4	0
		Tsamang		0	0
		Yadi		1	0
Yangbari		2	0		

Contd/...Table 6.4 Health Infrastructure by Districts - 2015

District	Hospital	Basic Health Unit	Sub-pots	No. of ORC	
				With Shed	Without Shed
			Silambi	0	0
			Tongla	0	0
			Pangthang	0	0
			Resa	0	0
			Takambi	0	0
Total	1	23	5	53	0
Paro	Paro			7	2
		Bueltikha		4	0
		Dawakha		3	1
		Drugyal		3	2
Total	1	3	0	17	5
Pemagatshel	Pemagatshel			6	0
		Chhimoong		1	0
		Chhoekhorling		2	0
		Dechhenling		3	0
		Dungmaed		1	0
		GonpaSingma		4	0
		Nanong		4	0
		Nganglam I		1	3
		Norboogang		1	1
		Pretengma		3	0
		Thrumchung		1	0
		Tshatshi		3	0
		Yurung		1	0
			Borangma	0	0
			Chongshing	1	0
			Khangma	1	0
			Mikuri	0	1
			Naskhar	0	0
			Shali	0	0
			Thongsa	1	0
Total	1	12	7	34	5
Punakha	Punakha			1	0
		Goenshari		1	0
		Kabisa		3	0
		Norbugang		1	0
		Samadingkha		3	0
		Shelnga		0	0
		Thinleygang		2	0
		Tshochasa		0	0
			Lobesa	0	0
Total	1	7	1	11	0
Samdrup Jongkhar	Samdrup Jongkhar			5	0
	Deothang RBA			0	0
		Gomdar I		2	0
		Jomotsangkha I		1	0

Contd/...Table 6.4 Health Infrastructure by Districts - 2015

District	Hospital	Basic Health Unit	Sub-post	No. of ORC	
				With Shed	Without Shed
		Lauri		2	0
		Moenjiwoong		2	0
		Martshalla		4	1
		Orong		1	1
		Pemathang		4	0
		SamdrupChhoeling I		3	2
		Wangphoog		3	0
		Zangthi		1	0
Total	2	10	0	28	4
Samtse	Samtse			3	0
	Gomtu			5	0
		Bara		3	1
		Chengmari		2	0
		Doongtoed		3	0
		Dorokha		4	0
		Duenchukha		2	0
		Ganthog		1	3
		Panbari		3	0
		Pemaling		5	0
		SangaCholing		2	0
		Sengteng		4	0
		Sipsu I		1	0
		Tendruk		3	0
		Ugyentse		2	0
		Yoelseltse		2	0
Total	2	14	0	45	4
Sarpang	Sarpang			1	0
	Gelephu			1	1
		Chhuzangang I		0	0
		Chokhorling		1	0
		Gakiling		1	0
		Jangchubling		2	0
		JigmeChholing		1	0
		Jigmed-ling		1	0
		Lhayul		0	0
		Norbuling		3	0
		Sarpangsheer		0	0
		Seng-Gey		0	0
		Tarraythang		0	0
		Umling		1	0
			Phibsoo	0	0
Total	2	12	1	12	1
Thimphu	JDWNRH			0	7
	IBF Hospital			0	0
	Lungtenphug RBA			0	0
	Gidakom			3	2

Contd/....Table 6.4 Health Infrastructure by Districts - 2015

District	Hospital	Basic Health Unit	Sub-post	No. of ORC	
				With Shed	Without Shed
		Barshong		0	0
		Chamgang		0	0
		Chamgang RBP		0	0
		Changji		0	0
		Dechhencholing I		0	0
		Ge-Nyenkha		0	2
		Hongtsho		0	0
		Jungshina		0	0
		Kuchuchin		0	0
		Lingzhi		1	2
		Motithang		0	0
		RBPHQ Clinic		0	0
		Soe		1	0
Total	4	13	0	5	13
Trashigang	Trashigang	Trashigang		1	1
		Riserboo		2	0
		Yongphula RBA		0	0
		Bartsham I		3	0
		Bidoong		2	0
		Bikhar		2	0
		Chaling		0	0
		Chhangmi		2	0
		Kanglung I		6	0
		Kangpar		5	0
		Khaling I		5	0
		Lumang		2	0
		Merag		1	0
		Phongmed		1	0
		Radi		4	0
		Rangjoong I		1	0
		Sagteng		1	0
		Thoongkhar		3	0
		Tsangpo I		1	0
		Udzorong		4	0
		Ya-brang		1	0
		Yangnyer		6	0
					Jongkhar
			Passaphoog	1	0
			Phegpari	1	0
			Thongrong	0	0
Total	3	19	4	55	1

Contd/...Table 6.4 Health Infrastructure by Districts - 2015

District	Hospital	Basic Health Unit	Sub-post	No. of ORC	
				With Shed	Without Shed
Trashiyangtse	Yangtse			2	0
		Dungzam		2	0
		Jamkhar		2	0
		Khamdang I		4	0
		Khini		4	0
		Melongkhar		0	0
		Ramjar		1	2
		Thragom		2	0
		Tonmzhang		3	0
			Jangphutse	1	0
			Rabtey	0	0
Total	1	8	2	21	2
Trongsa	Trongsa			3	0
		Bemji		4	0
		Jangbi		2	0
		Kuenga Rabten		3	0
		Nabji Korphu		0	0
		Tashiling		3	0
		Tongtophel		6	0
			Kella	0	0
			Nabji	0	0
			Nimshong	0	0
Total	1	6	3	21	0
Tsirang	Damphu			4	1
		Barshong		0	1
		Doonlagang		1	0
		Mendrelgang		2	1
		Pungtenchhu		3	1
		Semjong		1	0
		Sergithang		2	0
		Tsirangtoe		1	1
Total	1	7	0	14	5
Wangdue	Tencholing			0	0
Phodrang	RBA Bajo Hospital			3	0
		Dangchu		3	0
		Esa I		3	1
		Gaselo		3	0
		Jalla		0	3
		Kamichu		4	0
		Samtegang		4	1
		Sephu		2	0
		Teki		2	0

Contd/....Table 6.4 Health Infrastructure by Districts - 2015

District	Hospital	Basic Health Unit	Sub-post	No. of ORC	
				With Shed	Without Shed
		Uma		0	0
			Khotokha	0	0
			Lopokha	0	0
Total	2	9	2	24	5
Zhemgang	Yebilaptsa			5	0
		Bjoka		2	0
		Buli		2	0
		Gongphu		1	0
		Goshing		4	0
		Kaktong		1	1
		Khomshar		1	1
		Kradijong		0	0
		Langdurbi		1	1
		Pangbang I		3	0
		Pantang		3	1
		Shingkhar		2	0
		Tshaidang		4	0
		Zhemgang I		1	0
			Manas	0	0
			Namregang	0	0
Total	1	13	2	30	4
National	30	207	28	494	68

Table 7: Demographic statistics

Demographic statistics

Sl. #	Indicators	Year					Source
		2011	2012	2013	2014	2015	
1	Population – total	708,265 (estimated)	720,679 (estimated)	733,004 (estimated)	745,153 (estimated)	757,042 (estimated)	SYB (2015), NSB
2	Population – median age (years)	23.7	24.0	24.0	24.0	24.0	SYB (2015), NSB
3	Population – under 15 (numbers & %)	214,828 [30.3]	216,972 [30.1]	219,412 [29.9]	222,035 [29.8]	224,737 [29.7]	SYB (2015), NSB
4	Population – aged 15-59 (numbers & %)	444,254 [62.7]	453,283 [62.9]	461,778 [63.0]	469,803 [63.0]	477,300 [63.0]	SYB (2015), NSB
5	Population – aged over 60 (numbers & %)	49,183 [6.9]	50,424 [7.0]	51,814 [7.1]	53,345 [7.2]	55,005 [7.3]	SYB (2015), NSB
6	Overall Sex ratio (M:F)	109.1	109.1	108.3	108.4	108.1	SYB (2015), NSB